

## Product datasheet for **TA322887S**

### TRF1 (TERF1) Rabbit Polyclonal Antibody

#### Product data:

Product Type:	Primary Antibodies
Applications:	IHC, WB
Recommended Dilution:	WB: 500-2000 WB positive control: A549 cell lysate IHC: 25-100 Positive control: Human lung cancer Predicted cell location: Cytoplasm and Nucleus
Reactivity:	Human, Mouse
Host:	Rabbit
Isotype:	IgG
Clonality:	Polyclonal
Immunogen:	Fusion protein corresponding to a region derived from 63-268 amino acids of human telomeric repeat binding factor (NIMA-interacting) 1
Formulation:	PBS pH7.3, 0.05% NaN <sub>3</sub> , 50% glycerol
Purification:	Antigen affinity purification
Conjugation:	Unconjugated
Storage:	Store at -20°C as received.
Stability:	Stable for 12 months from date of receipt.
Predicted Protein Size:	50 kDa
Gene Name:	telomeric repeat binding factor 1
Database Link:	<a href="#">NP_003209</a> <a href="#">Entrez Gene 21749 Mouse</a> <a href="#">Entrez Gene 7013 Human</a> <a href="#">P54274</a>



[View online »](#)

**Background:**

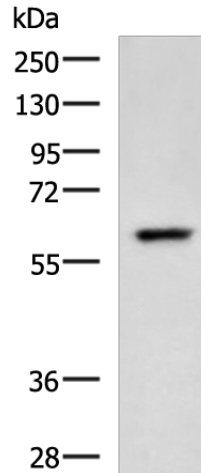
This gene encodes a telomere specific protein which is a component of the telomere nucleoprotein complex. This protein is present at telomeres throughout the cell cycle and functions as an inhibitor of telomerase, acting in cis to limit the elongation of individual chromosome ends. The protein structure contains a C-terminal Myb motif, a dimerization domain near its N-terminus and an acidic N-terminus. Two transcripts of this gene are alternatively spliced products.

**Synonyms:**

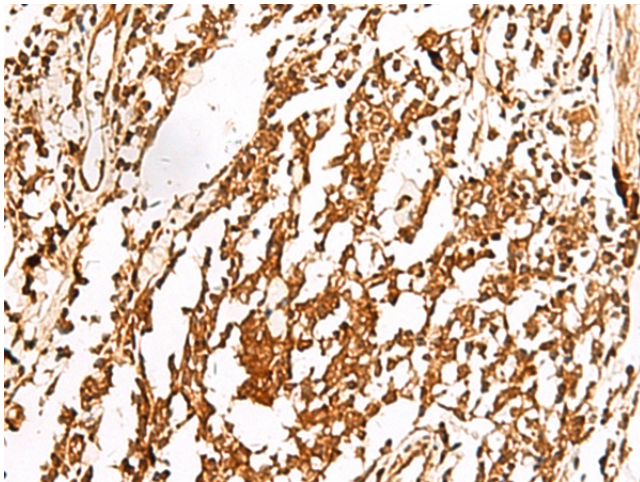
hTRF1-AS; PIN2; t-TRF1; TRBF1; TRF; TRF1

**Protein Families:**

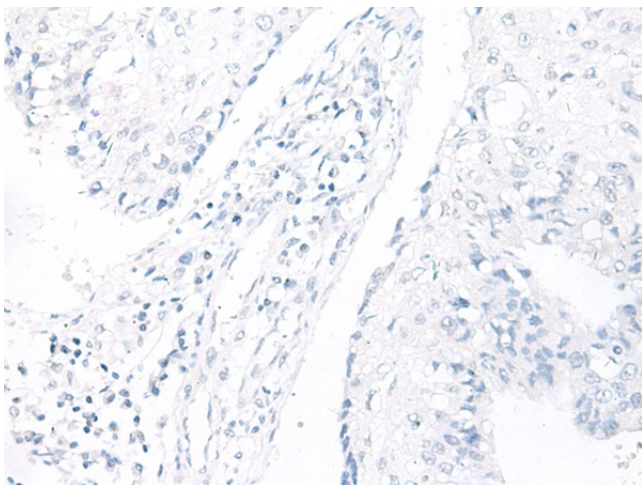
Transcription Factors

**Product images:**


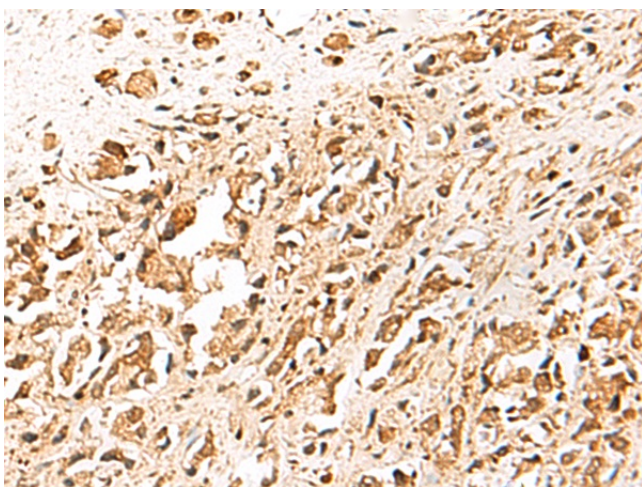
Gel: 8%SDS-PAGE  
 Lysate: 40 µg  
 Lane: A549 cell lysate  
 Primary antibody: [TA322887] (TERF1 Antibody) at dilution 1/400  
 Secondary antibody: Goat anti rabbit IgG at 1/5000 dilution  
 Exposure time: 10 seconds



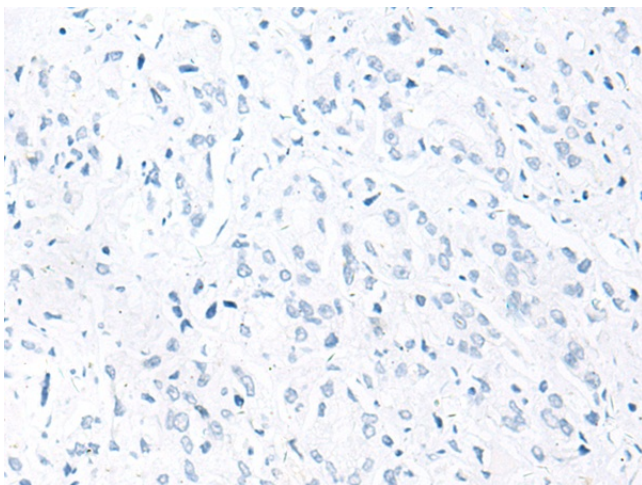
Immunohistochemistry of paraffin-embedded Human lung cancer tissue using [TA322887] (TERF1 Antibody) at dilution 1/30 (Original magnification: ×200)



Immunohistochemistry of paraffin-embedded Human lung cancer tissue using [TA322887] (TERF1 Antibody) at dilution 1/30, treated with fusion protein. (Original magnification: ×200)



Immunohistochemistry of paraffin-embedded Human prostate cancer tissue using [TA322887] (TERF1 Antibody) at dilution 1/30 (Original magnification: ×200)



Immunohistochemistry of paraffin-embedded Human prostate cancer tissue using [TA322887] (TERF1 Antibody) at dilution 1/30, treated with fusion protein. (Original magnification: ×200)