

## Product datasheet for **TA322886**

### TRF1 (TERF1) Rabbit Polyclonal Antibody

#### Product data:

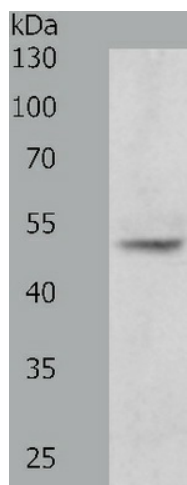
Product Type:	Primary Antibodies
Applications:	IHC, WB
Recommended Dilution:	ELISA: 1:2000-5000, WB: 1:200-1000, IHC: 1:25-100
Reactivity:	Human, Mouse, Rat
Host:	Rabbit
Isotype:	IgG
Clonality:	Polyclonal
Immunogen:	Fusion protein corresponding to a region derived from 63-268 amino acids of human telomeric repeat binding factor (NIMA-interacting) 1
Formulation:	PBS pH7.3, 0.05% NaN <sub>3</sub> , 50% glycerol
Concentration:	lot specific
Purification:	Antigen affinity purification
Conjugation:	Unconjugated
Storage:	Store at -20°C as received.
Stability:	Stable for 12 months from date of receipt.
Predicted Protein Size:	50 kDa
Gene Name:	telomeric repeat binding factor 1
Database Link:	<a href="#">NP_003209</a> <a href="#">Entrez Gene 21749 MouseEntrez Gene 297758 RatEntrez Gene 7013 Human P54274</a>
Background:	This gene encodes a telomere specific protein which is a component of the telomere nucleoprotein complex. This protein is present at telomeres throughout the cell cycle and functions as an inhibitor of telomerase, acting in cis to limit the elongation of individual chromosome ends. The protein structure contains a C-terminal Myb motif, a dimerization domain near its N-terminus and an acidic N-terminus. Two transcripts of this gene are alternatively spliced products.
Synonyms:	hTRF1-AS; PIN2; t-TRF1; TRBF1; TRF; TRF1



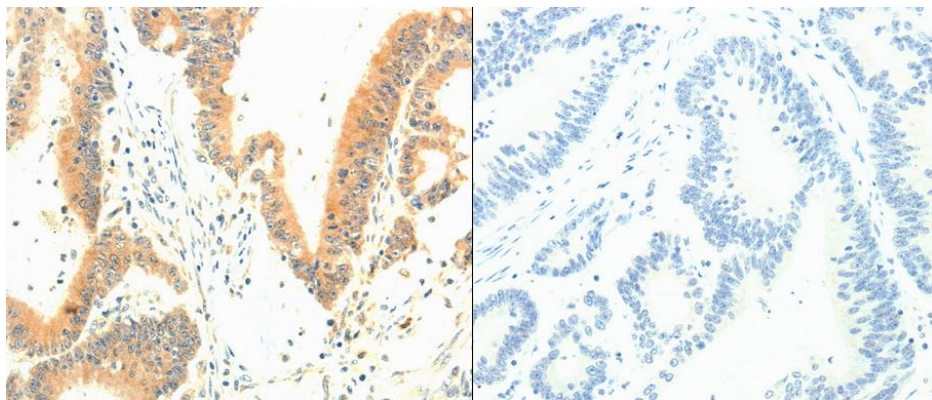
[View online »](#)

Protein Families: Transcription Factors

### Product images:



Predicted band size: 50kDa. Positive control: Human fetal kidney tissue lysate. Recommended dilution: 1/200-1000. (Gel: 10%SDS-PAGE Lysate: 50 ug Primary antibody: 1/400 dilution Secondary antibody: Goat anti Rabbit IgG - H&L (HRP) at 1/8000 dilution Exposure time: 5 minutes)



Predicted cell location: Cytoplasm. Positive control: Human colon cancer tissue. Recommended dilution: 1/25-100 The image on the left is immunohistochemistry of paraffin-embedded human colon cancer tissue using TRF1 antibody at dilution 1/30, on the right is treated with the fusion protein. (Original magnification:x200)