

Product datasheet for **TA322882S**

TFF1 Rabbit Polyclonal Antibody

Product data:

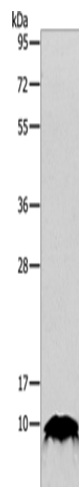
| | |
|-------------------------|---|
| Product Type: | Primary Antibodies |
| Applications: | WB |
| Recommended Dilution: | WB: 200-1000 WB positive control: Human fetal kidney tissue |
| Reactivity: | Human |
| Host: | Rabbit |
| Isotype: | IgG |
| Clonality: | Polyclonal |
| Immunogen: | Fusion protein corresponding to a region derived from 25-84 amino acids of human trefoil factor 1 |
| Formulation: | PBS pH7.3, 0.05% NaN ₃ , 50% glycerol |
| Purification: | Antigen affinity purification |
| Conjugation: | Unconjugated |
| Storage: | Store at -20°C as received. |
| Stability: | Stable for 12 months from date of receipt. |
| Predicted Protein Size: | 9 kDa |
| Gene Name: | trefoil factor 1 |
| Database Link: | NP_003216 Entrez Gene 7031 Human P04155 |
| Background: | Members of the trefoil family are characterized by having at least one copy of the trefoil motif; a 40-amino acid domain that contains three conserved disulfides. They are stable secretory proteins expressed in gastrointestinal mucosa. Their functions are not defined; but they may protect the mucosa from insults; stabilize the mucus layer; and affect healing of the epithelium. This gene; which is expressed in the gastric mucosa; has also been studied because of its expression in human tumors. This gene and two other related trefoil family member genes are found in a cluster on chromosome 21.? |
| Synonyms: | BCEI; D21S21; HP1.A; HPS2; pNR-2; pS2 |



[View online »](#)

Protein Families: Druggable Genome, Secreted Protein

Product images:



Gel: 10+12%SDS-PAGE
Lysate: 40 μ g
Lane: Human fetal kidney tissue
Primary antibody: [TA322882] (TFF1 Antibody) at dilution 1/100
Secondary antibody: Goat anti rabbit IgG at 1/8000 dilution
Exposure time: 30 seconds