

## Product datasheet for **TA322881S**

### TIMP2 Rabbit Polyclonal Antibody

#### Product data:

Product Type:	Primary Antibodies
Applications:	IHC
Recommended Dilution:	IHC: 25-100 Positive control: Human liver cancer Predicted cell location: Cytoplasm
Reactivity:	Human, Mouse, Rat
Host:	Rabbit
Isotype:	IgG
Clonality:	Polyclonal
Immunogen:	Fusion protein corresponding to a region derived from 30-220 amino acids of human TIMP metalloproteinase inhibitor 2
Formulation:	PBS pH7.3, 0.05% NaN <sub>3</sub> , 50% glycerol
Purification:	Antigen affinity purification
Conjugation:	Unconjugated
Storage:	Store at -20°C as received.
Stability:	Stable for 12 months from date of receipt.
Gene Name:	TIMP metalloproteinase inhibitor 2
Database Link:	<a href="#">NP_003246</a> <a href="#">Entrez Gene 21858 Mouse</a> <a href="#">Entrez Gene 29543 Rat</a> <a href="#">Entrez Gene 7077 Human</a> <a href="#">P16035</a>
Background:	This gene is a member of the TIMP gene family. The proteins encoded by this gene family are natural inhibitors of the matrix metalloproteinases; a group of peptidases involved in degradation of the extracellular matrix. In addition to an inhibitory role against metalloproteinases; the encoded protein has a unique role among TIMP family members in its ability to directly suppress the proliferation of endothelial cells. As a result; the encoded protein may be critical to the maintenance of tissue homeostasis by suppressing the proliferation of quiescent tissues in response to angiogenic factors; and by inhibiting protease activity in tissues undergoing remodelling of the extracellular matrix.

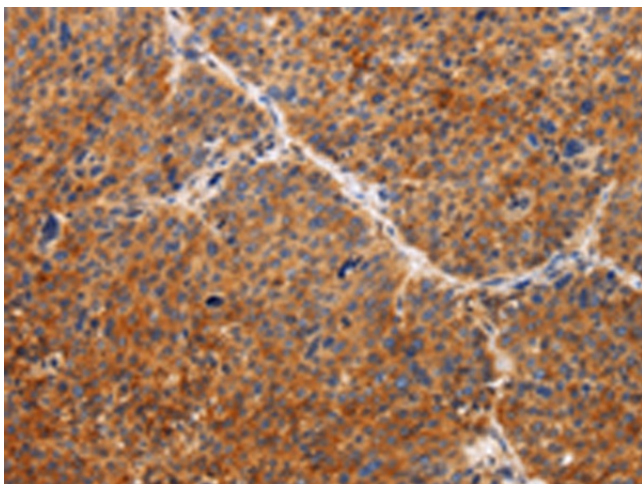


[View online »](#)

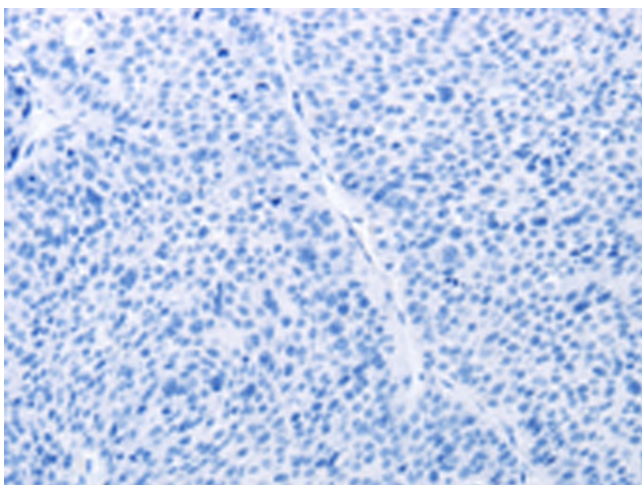
Synonyms: CSC-21K; DDC8

Protein Families: Druggable Genome, Secreted Protein

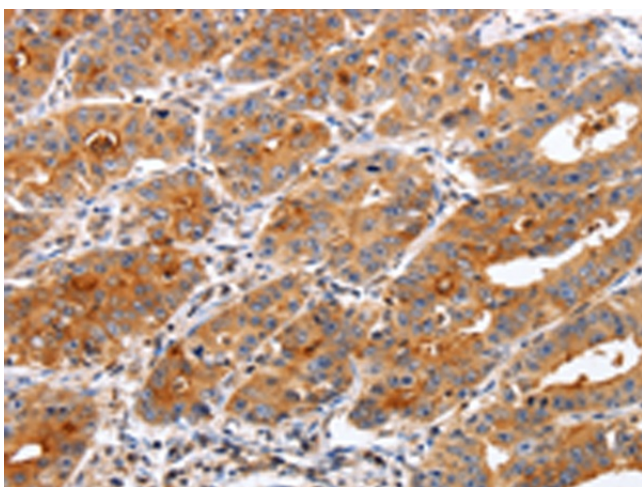
### Product images:



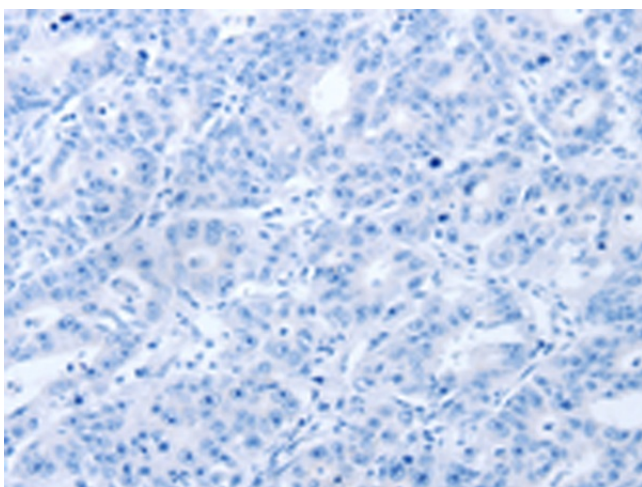
Immunohistochemistry of paraffin-embedded Human liver cancer tissue using [TA322881] (TIMP2 Antibody) at dilution 1/20 (Original magnification:  $\times 200$ )



Immunohistochemistry of paraffin-embedded Human liver cancer tissue using [TA322881] (TIMP2 Antibody) at dilution 1/20, treated with fusion protein. (Original magnification:  $\times 200$ )



Immunohistochemistry of paraffin-embedded Human gastric cancer tissue using [TA322881] (TIMP2 Antibody) at dilution 1/20 (Original magnification:  $\times 200$ )



Immunohistochemistry of paraffin-embedded Human gastric cancer tissue using [TA322881] (TIMP2 Antibody) at dilution 1/20, treated with fusion protein. (Original magnification:  $\times 200$ )