

## Product datasheet for **TA322880**

### TIMP1 Rabbit Polyclonal Antibody

#### Product data:

Product Type:	Primary Antibodies
Applications:	IHC
Recommended Dilution:	IHC: 15-50 Positive control: Human cervical cancer Predicted cell location: Cytoplasm
Reactivity:	Human
Host:	Rabbit
Isotype:	IgG
Clonality:	Polyclonal
Immunogen:	Fusion protein corresponding to a region derived from 24-207 amino acids of human TIMP metalloproteinase inhibitor 1
Formulation:	PBS pH7.3, 0.05% NaN <sub>3</sub> , 50% glycerol
Concentration:	lot specific
Purification:	Antigen affinity purification
Conjugation:	Unconjugated
Storage:	Store at -20°C as received.
Stability:	Stable for 12 months from date of receipt.
Gene Name:	TIMP metalloproteinase inhibitor 1
Database Link:	<a href="#">NP_003245</a> <a href="#">Entrez Gene 7076 Human</a> <a href="#">P01033</a>



[View online »](#)

**Background:**

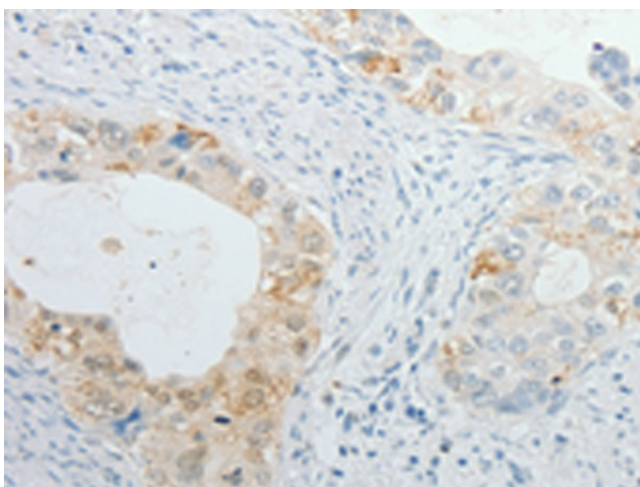
This gene belongs to the TIMP gene family. The proteins encoded by this gene family are natural inhibitors of the matrix metalloproteinases (MMPs); a group of peptidases involved in degradation of the extracellular matrix. In addition to its inhibitory role against most of the known MMPs; the encoded protein is able to promote cell proliferation in a wide range of cell types; and may also have an anti-apoptotic function. Transcription of this gene is highly inducible in response to many cytokines and hormones. In addition; the expression from some but not all inactive X chromosomes suggests that this gene inactivation is polymorphic in human females. This gene is located within intron 6 of the synapsin I gene and is transcribed in the opposite direction.

**Synonyms:**

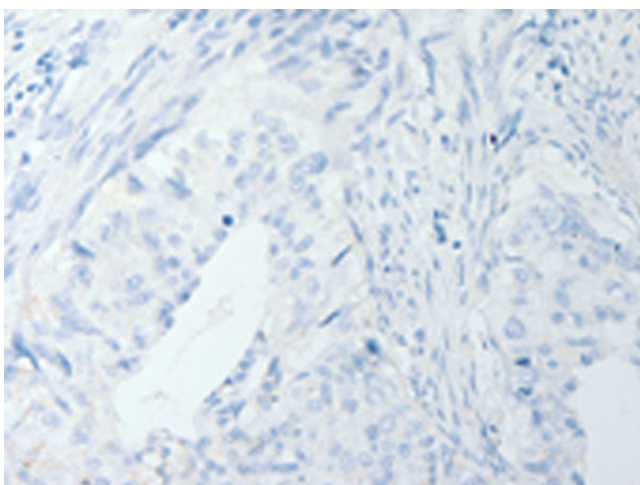
CLGI; EPA; EPO; HCl; TIMP; TIMP-1

**Protein Families:**

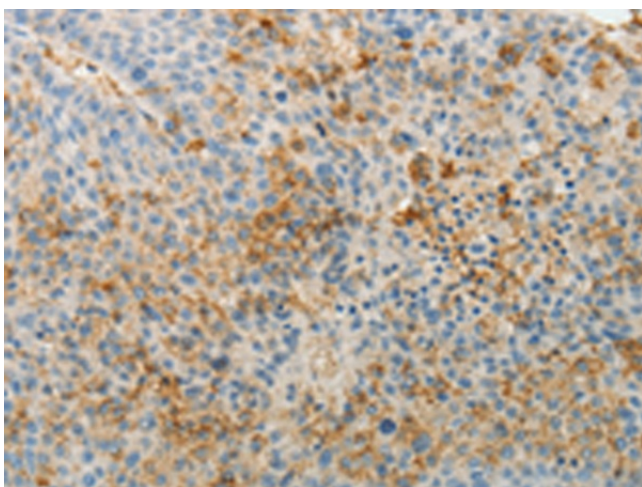
Druggable Genome, Secreted Protein

**Product images:**

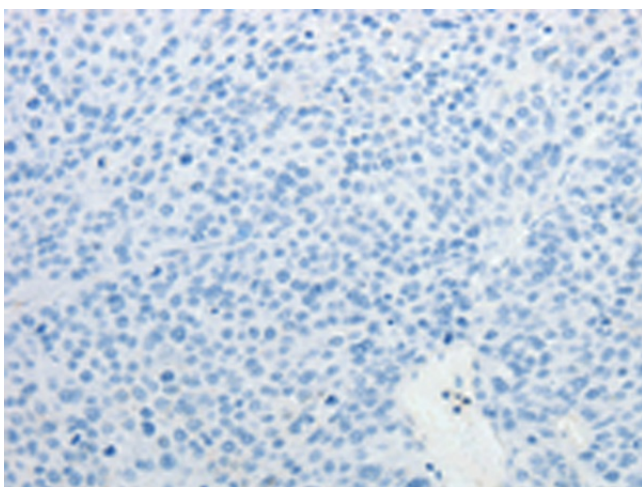
Immunohistochemistry of paraffin-embedded Human cervical cancer tissue using TA322880 (TIMP1 Antibody) at dilution 1/15 (Original magnification: x200)



Immunohistochemistry of paraffin-embedded Human cervical cancer tissue using TA322880 (TIMP1 Antibody) at dilution 1/15, treated with fusion protein. (Original magnification: x200)



Immunohistochemistry of paraffin-embedded Human liver cancer tissue using TA322880 (TIMP1 Antibody) at dilution 1/15 (Original magnification:  $\times 200$ )



Immunohistochemistry of paraffin-embedded Human liver cancer tissue using TA322880 (TIMP1 Antibody) at dilution 1/15, treated with fusion protein. (Original magnification:  $\times 200$ )