

## Product datasheet for **TA322878**

### TLR2 Rabbit Polyclonal Antibody

#### Product data:

Product Type:	Primary Antibodies
Applications:	IHC
Recommended Dilution:	IHC: 25-100 Positive control: Human thyroid cancer Predicted cell location: Cytoplasm
Reactivity:	Human, Mouse
Host:	Rabbit
Isotype:	IgG
Clonality:	Polyclonal
Immunogen:	Fusion protein corresponding to C terminal 143 amino acids of human toll-like receptor 2
Formulation:	PBS pH7.3, 0.05% NaN <sub>3</sub> , 50% glycerol
Concentration:	lot specific
Purification:	Antigen affinity purification
Conjugation:	Unconjugated
Storage:	Store at -20°C as received.
Stability:	Stable for 12 months from date of receipt.
Gene Name:	toll like receptor 2
Database Link:	<a href="#">NP_003255</a> <a href="#">Entrez Gene 24088 Mouse</a> <a href="#">Entrez Gene 7097 Human</a> <a href="#">O60603</a>
Background:	The protein encoded by this gene is a member of the Toll-like receptor (TLR) family which plays a fundamental role in pathogen recognition and activation of innate immunity. TLRs are highly conserved from Drosophila to humans and share structural and functional similarities. They recognize pathogen-associated molecular patterns (PAMPs) that are expressed on infectious agents, and mediate the production of cytokines necessary for the development of effective immunity. The various TLRs exhibit different patterns of expression. This gene is expressed most abundantly in peripheral blood leukocytes, and mediates host response to Gram-positive bacteria and yeast via stimulation of NF-kappaB.?



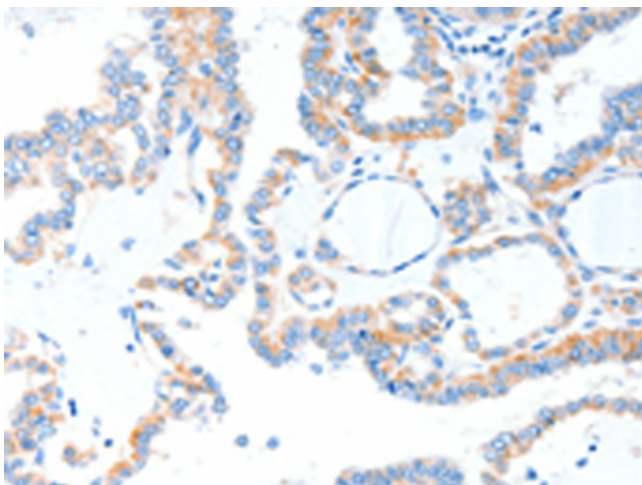
[View online »](#)

Synonyms: CD282; TIL4

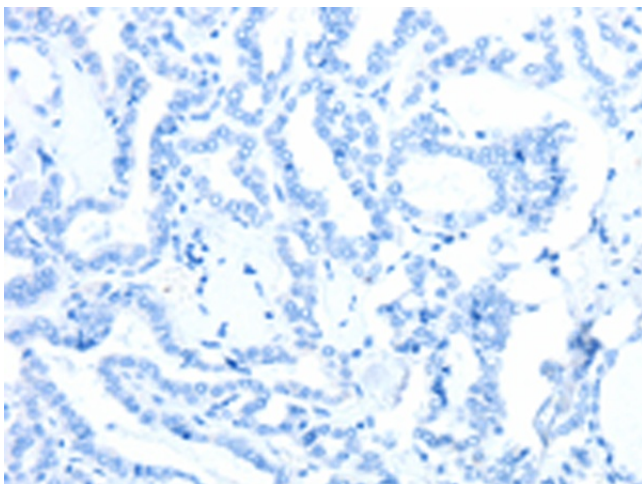
Protein Families: Druggable Genome, Transmembrane

Protein Pathways: Toll-like receptor signaling pathway

### Product images:



Immunohistochemistry of paraffin-embedded Human thyroid cancer tissue using TA322878 (TLR2 Antibody) at dilution 1/55 (Original magnification:  $\times 200$ )



Immunohistochemistry of paraffin-embedded Human thyroid cancer tissue using TA322878 (TLR2 Antibody) at dilution 1/55, treated with fusion protein. (Original magnification:  $\times 200$ )