

Product datasheet for **TA322875**

Tropomyosin 2 (TPM2) Rabbit Polyclonal Antibody

Product data:

Product Type:	Primary Antibodies
Applications:	IHC, WB
Recommended Dilution:	WB: 1000-5000 WB positive control: Human leiomyosarcoma and mouse testis tissue IHC: 25-100 Positive control: Human liver cancer Predicted cell location: Cytoplasm
Reactivity:	Human, Mouse, Rat
Host:	Rabbit
Isotype:	IgG
Clonality:	Polyclonal
Immunogen:	Synthetic peptide corresponding to a region derived from 270-284 amino acids of human tropomyosin 2 (beta)
Formulation:	PBS pH7.3, 0.05% NaN ₃ , 50% glycerol
Concentration:	lot specific
Purification:	Antigen affinity purification
Conjugation:	Unconjugated
Storage:	Store at -20°C as received.
Stability:	Stable for 12 months from date of receipt.
Predicted Protein Size:	33 kDa
Gene Name:	tropomyosin 2 (beta)
Database Link:	NP_003280 Entrez Gene 22004 Mouse Entrez Gene 500450 Rat Entrez Gene 7169 Human P07951



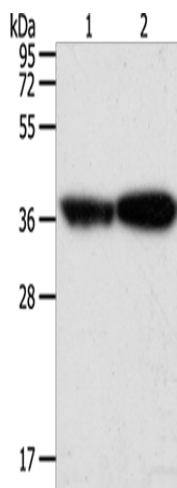
[View online »](#)

Background: This gene encodes beta-tropomyosin; a member of the actin filament binding protein family; and mainly expressed in slow; type 1 muscle fibers. Mutations in this gene can alter the expression of other sarcomeric tropomyosin proteins; and cause cap disease; nemaline myopathy and distal arthrogyriposis syndromes. Alternatively spliced transcript variants encoding different isoforms have been found for this gene.

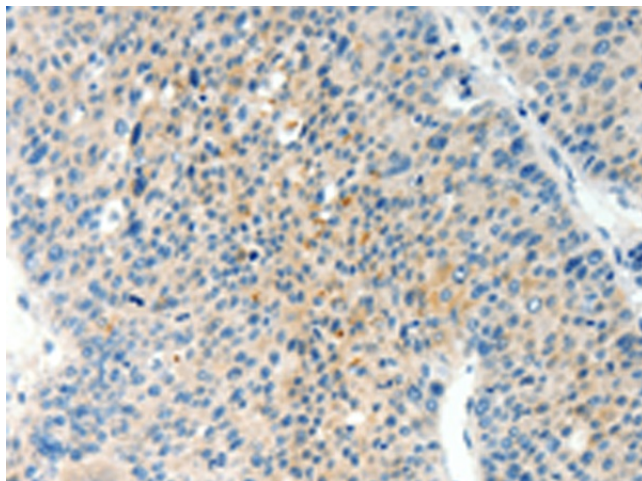
Synonyms: AMCD1; DA1; DA2B; HEL-S-273; NEM4; TMSB

Protein Pathways: Cardiac muscle contraction, Dilated cardiomyopathy, Hypertrophic cardiomyopathy (HCM)

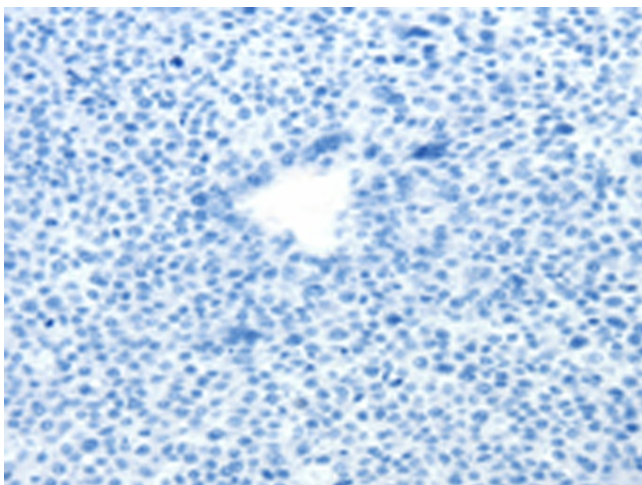
Product images:



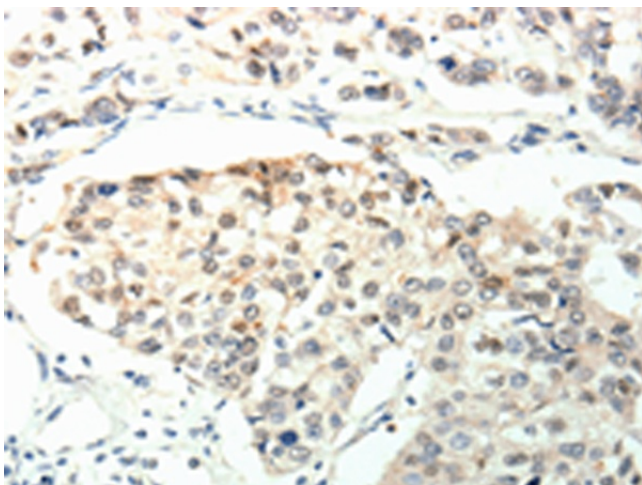
Gel: 12%SDS-PAGE
Lysate: 40 µg
Lane 1-2: Human leiomyosarcoma tissue
mouse testis tissue
Primary antibody: TA322875 (TPM2 Antibody) at dilution 1/1000
Secondary antibody: Goat anti rabbit IgG at 1/8000 dilution
Exposure time: 1 second



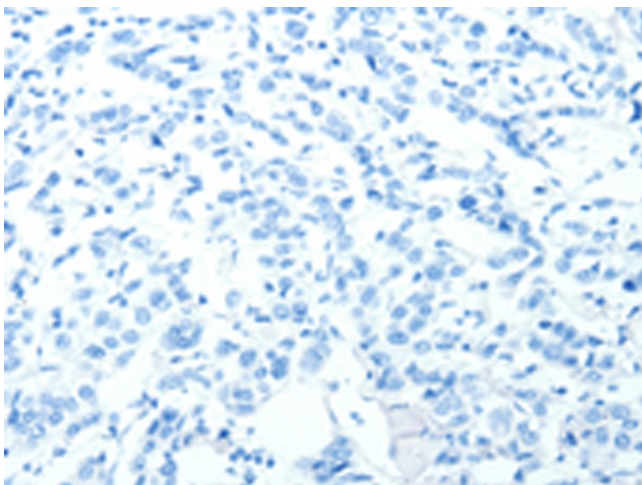
Immunohistochemistry of paraffin-embedded Human liver cancer tissue using TA322875 (TPM2 Antibody) at dilution 1/60 (Original magnification: ×200)



Immunohistochemistry of paraffin-embedded Human liver cancer tissue using TA322875 (TPM2 Antibody) at dilution 1/60, treated with synthetic peptide. (Original magnification: $\times 200$)



Immunohistochemistry of paraffin-embedded Human breast cancer tissue using TA322875 (TPM2 Antibody) at dilution 1/60 (Original magnification: $\times 200$)



Immunohistochemistry of paraffin-embedded Human breast cancer tissue using TA322875 (TPM2 Antibody) at dilution 1/60, treated with synthetic peptide. (Original magnification: $\times 200$)