

## Product datasheet for **TA322874S**

### Tropomyosin 2 (TPM2) Rabbit Polyclonal Antibody

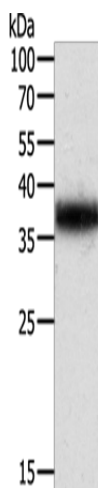
#### Product data:

|                         |  |
|-------------------------|--|
| Product Type:           | Primary Antibodies   |
| Applications:           | WB   |
| Recommended Dilution:   | WB: 200-1000<br>WB positive control: Mouse testis tissue   |
| Reactivity:             | Human, Mouse, Rat  |
| Host:                   | Rabbit   |
| Isotype:                | IgG  |
| Clonality:              | Polyclonal   |
| Immunogen:              | Synthetic peptide corresponding to a region derived from 270-284 amino acids of human tropomyosin 2 (beta)   |
| Formulation:            | PBS pH7.3, 0.05% NaN <sub>3</sub> , 50% glycerol   |
| Purification:           | Antigen affinity purification  |
| Conjugation:            | Unconjugated   |
| Storage:                | Store at -20°C as received.  |
| Stability:              | Stable for 12 months from date of receipt.   |
| Predicted Protein Size: | 33 kDa   |
| Gene Name:              | tropomyosin 2 (beta)   |
| Database Link:          | <a href="#">NP_003280</a><br><a href="#">Entrez Gene 22004 MouseEntrez Gene 500450 RatEntrez Gene 7169 Human P07951</a>  |
| Background:             | This gene encodes beta-tropomyosin; a member of the actin filament binding protein family; and mainly expressed in slow; type 1 muscle fibers. Mutations in this gene can alter the expression of other sarcomeric tropomyosin proteins; and cause cap disease; nemaline myopathy and distal arthrogyrosis syndromes. Alternatively spliced transcript variants encoding different isoforms have been found for this gene. |
| Synonyms:               | AMCD1; DA1; DA2B; HEL-S-273; NEM4; TMSB  |
| Protein Pathways:       | Cardiac muscle contraction, Dilated cardiomyopathy, Hypertrophic cardiomyopathy (HCM)  |



[View online »](#)

## Product images:



Gel: 12%SDS-PAGE  
Lysate: 40  $\mu$ g  
Lane: Mouse testis tissue  
Primary antibody: [TA322874] (TPM2 Antibody) at dilution 1/200  
Secondary antibody: Goat anti rabbit IgG at 1/8000 dilution  
Exposure time: 1 second