

## Product datasheet for **TA322874**

### Tropomyosin 2 (TPM2) Rabbit Polyclonal Antibody

#### Product data:

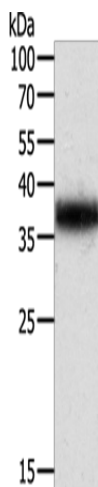
Product Type:	Primary Antibodies
Applications:	WB
Recommended Dilution:	WB: 200-1000 WB positive control: Mouse testis tissue
Reactivity:	Human, Mouse, Rat
Host:	Rabbit
Isotype:	IgG
Clonality:	Polyclonal
Immunogen:	Synthetic peptide corresponding to a region derived from 270-284 amino acids of human tropomyosin 2 (beta)
Formulation:	PBS pH7.3, 0.05% NaN <sub>3</sub> , 50% glycerol
Concentration:	lot specific
Purification:	Antigen affinity purification
Conjugation:	Unconjugated
Storage:	Store at -20°C as received.
Stability:	Stable for 12 months from date of receipt.
Predicted Protein Size:	33 kDa
Gene Name:	tropomyosin 2 (beta)
Database Link:	<a href="#">NP_003280</a> <a href="#">Entrez Gene 22004 Mouse</a> <a href="#">Entrez Gene 500450 Rat</a> <a href="#">Entrez Gene 7169 Human</a> <a href="#">P07951</a>
Background:	This gene encodes beta-tropomyosin; a member of the actin filament binding protein family; and mainly expressed in slow; type 1 muscle fibers. Mutations in this gene can alter the expression of other sarcomeric tropomyosin proteins; and cause cap disease; nemaline myopathy and distal arthrogryposis syndromes. Alternatively spliced transcript variants encoding different isoforms have been found for this gene.
Synonyms:	AMCD1; DA1; DA2B; HEL-S-273; NEM4; TMSB



[View online »](#)

Protein Pathways: Cardiac muscle contraction, Dilated cardiomyopathy, Hypertrophic cardiomyopathy (HCM)

**Product images:**



Gel: 12%SDS-PAGE  
Lysate: 40 µg  
Lane: Mouse testis tissue  
Primary antibody: TA322874 (TPM2 Antibody) at dilution 1/200  
Secondary antibody: Goat anti rabbit IgG at 1/8000 dilution  
Exposure time: 1 second