

Product datasheet for **TA322872**

Tropomyosin 2 (TPM2) Rabbit Polyclonal Antibody

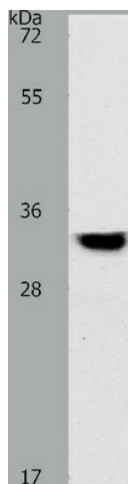
Product data:

Product Type:	Primary Antibodies
Applications:	IHC, WB
Recommended Dilution:	ELISA: 1:1000-5000, WB: 1:200-1000, IHC: 1:25-100
Reactivity:	Human, Mouse, Rat
Host:	Rabbit
Isotype:	IgG
Clonality:	Polyclonal
Immunogen:	Synthetic peptide corresponding to a region derived from 270-284 amino acids of human tropomyosin 2 (beta)
Formulation:	PBS pH7.3, 0.05% NaN ₃ , 50% glycerol
Concentration:	lot specific
Purification:	Antigen affinity purification
Conjugation:	Unconjugated
Storage:	Store at -20°C as received.
Stability:	Stable for 12 months from date of receipt.
Predicted Protein Size:	33 kDa
Gene Name:	tropomyosin 2 (beta)
Database Link:	NP_003280 Entrez Gene 22004 Mouse Entrez Gene 500450 Rat Entrez Gene 7169 Human P07951
Background:	This gene encodes beta-tropomyosin; a member of the actin filament binding protein family; and mainly expressed in slow; type 1 muscle fibers. Mutations in this gene can alter the expression of other sarcomeric tropomyosin proteins; and cause cap disease; nemaline myopathy and distal arthrogryposis syndromes. Alternatively spliced transcript variants encoding different isoforms have been found for this gene.
Synonyms:	AMCD1; DA1; DA2B; HEL-S-273; NEM4; TMSB
Protein Pathways:	Cardiac muscle contraction, Dilated cardiomyopathy, Hypertrophic cardiomyopathy (HCM)

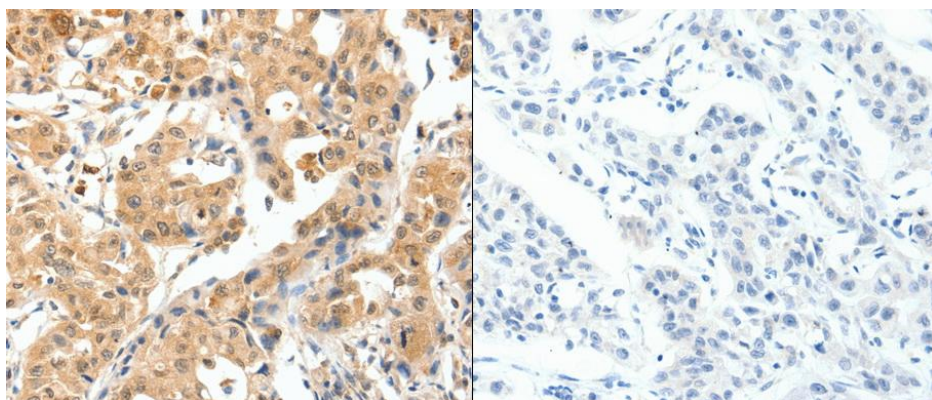


[View online »](#)

Product images:



Predicted band size: 33 kDa. Positive control: Human fetal muscle tissue lysate. Recommended dilution: 1/200-1000. (Gel: 10%SDS-PAGE Lysate: 40 ug per lane Primary antibody: 1/400 dilution Secondary antibody: Goat anti Rabbit IgG - H&L (HRP) at 1/10000 dilution Exposure time: 2 minutes)



Predicted cell location: Cytoplasm. Positive control: Human lung cancer tissue. Recommended dilution: 1/25-100 The image on the left is immunohistochemistry of paraffin-embedded human lung cancer tissue using TPM2 antibody at dilution 1/25, on the right is treated with the synthetic peptide. (Original magnification:x200)