

Product datasheet for **TA322866**

TXN Rabbit Polyclonal Antibody

Product data:

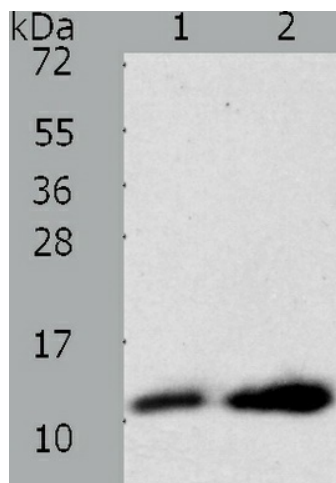
Product Type:	Primary Antibodies
Applications:	IHC, WB
Recommended Dilution:	ELISA: 1:1000-2000, WB: 1:200-1000, IHC: 1:25-100
Reactivity:	Human, Mouse, Rat
Host:	Rabbit
Isotype:	IgG
Clonality:	Polyclonal
Immunogen:	Synthetic peptide corresponding to a region derived from 91-105 amino acids of human thioredoxin
Formulation:	PBS pH7.3, 0.05% NaN ₃ , 50% glycerol
Concentration:	lot specific
Purification:	Antigen affinity purification
Conjugation:	Unconjugated
Storage:	Store at -20°C as received.
Stability:	Stable for 12 months from date of receipt.
Predicted Protein Size:	12 kDa
Gene Name:	thioredoxin
Database Link:	NP_003320 Entrez Gene 7295 Human P10599
Background:	The protein encoded by this gene acts as a homodimer and is involved in many redox reactions. The encoded protein is active in the reversible S-nitrosylation of cysteines in certain proteins; which is part of the response to intracellular nitric oxide. This protein is found in the cytoplasm. Two transcript variants encoding different isoforms have been found for this gene. Participates in various redox reactions through the reversible oxidation of its active center dithiol to a disulfide and catalyzes dithiol-disulfide exchange reactions.
Synonyms:	TRDX; TRX; TRX1



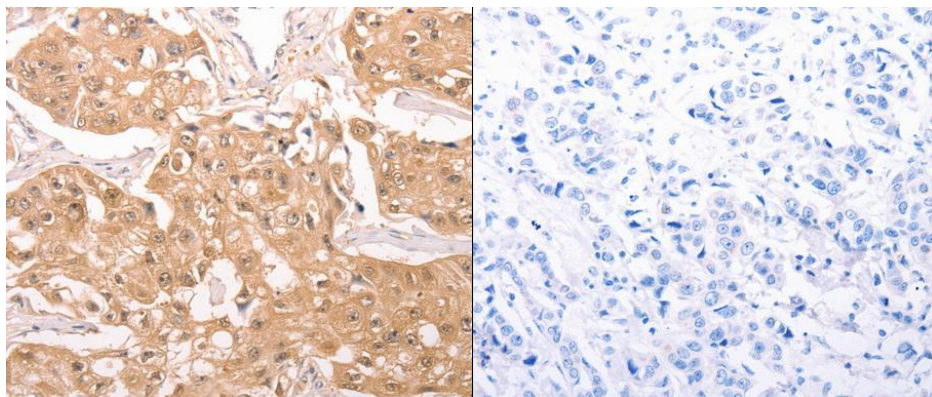
[View online »](#)

Protein Families: Druggable Genome

Product images:



Predicted band size: 12 kDa. Positive control: A172 and heLa cell lysate. Recommended dilution: 1/200-1000. (Gel: 12%SDS-PAGE Lane 1: A172 cell lysate lysate Lane 2: HeLa cell lysate lysate Lysates: 40 ug per lane Primary antibody: 1/200 dilution Secondary antibody: Goat anti Rabbit IgG - H&L (HRP) at 1/10000 dilution Exposure time: 30 minutes)



Predicted cell location: Cytoplasm, Nucleus. Positive control: Human breast cancer tissue. Recommended dilution: 1/25-100 The image on the left is immunohistochemistry of paraffin-embedded human breast cancer tissue using TXN antibody at dilution 1/20, on the right is treated with the synthetic peptide. (Original magnification:x200)