

## Product datasheet for **TA322865S**

### TXN Rabbit Polyclonal Antibody

#### Product data:

Product Type:	Primary Antibodies
Applications:	IHC, WB
Recommended Dilution:	WB: 1000-5000 WB positive control: Hela and MCF7 cells, human liver cancer tissue IHC: 50-200 Positive control: Human thyroid cancer Predicted cell location: Cytoplasm, Nucleus
Reactivity:	Human, Rat
Host:	Rabbit
Isotype:	IgG
Clonality:	Polyclonal
Immunogen:	Synthetic peptide corresponding to a region derived from 90-105 amino acids of human thioredoxin
Formulation:	PBS pH7.3, 0.05% NaN <sub>3</sub> , 50% glycerol
Purification:	Antigen affinity purification
Conjugation:	Unconjugated
Storage:	Store at -20°C as received.
Stability:	Stable for 12 months from date of receipt.
Predicted Protein Size:	12 kDa
Gene Name:	thioredoxin
Database Link:	<a href="#">NP_003320</a> <a href="#">Entrez Gene 7295 Human P10599</a>



[View online »](#)

**Background:**

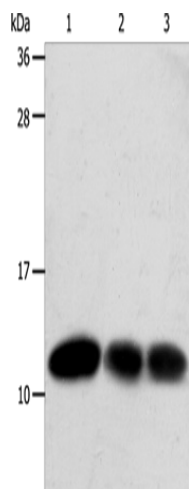
The protein encoded by this gene acts as a homodimer and is involved in many redox reactions. The encoded protein is active in the reversible S-nitrosylation of cysteines in certain proteins; which is part of the response to intracellular nitric oxide. This protein is found in the cytoplasm. Two transcript variants encoding different isoforms have been found for this gene. Plays a role in the reversible S-nitrosylation of cysteine residues in target proteins; and thereby contributes to the response to intracellular nitric oxide. Nitrosylates the active site Cys of CASP3 in response to nitric oxide (NO); and thereby inhibits caspase-3 activity.

**Synonyms:**

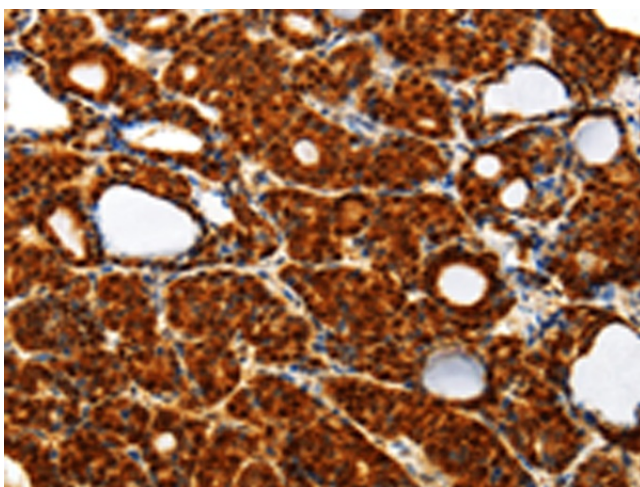
TRDX; TRX; TRX1

**Protein Families:**

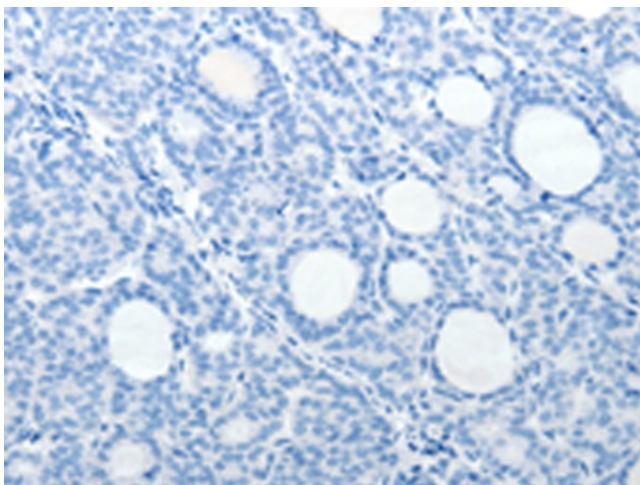
Druggable Genome

**Product images:**

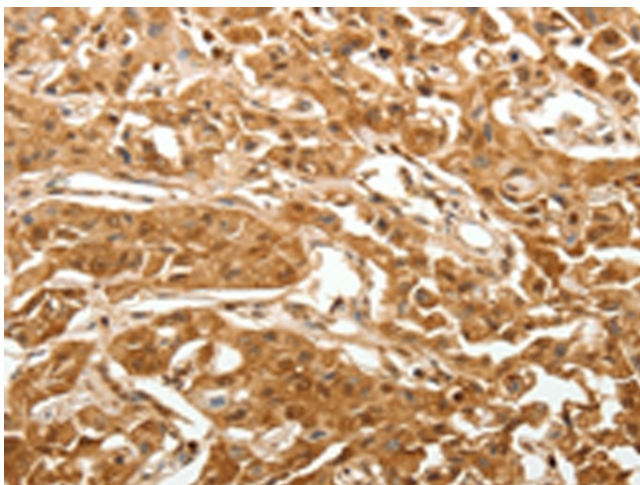
Gel: 12%SDS-PAGE  
Lysate: 40 µg  
Lane 1-3: HeLa cells  
MCF7 cells  
human liver cancer tissue  
Primary antibody: [TA322865] (TXN Antibody) at dilution 1/600  
Secondary antibody: Goat anti rabbit IgG at 1/8000 dilution  
Exposure time: 20 seconds



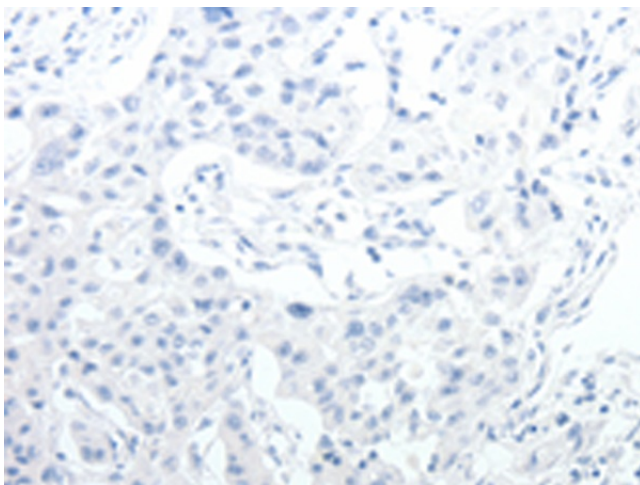
Immunohistochemistry of paraffin-embedded Human thyroid cancer tissue using [TA322865] (TXN Antibody) at dilution 1/40 (Original magnification: ×200)



Immunohistochemistry of paraffin-embedded Human thyroid cancer tissue using [TA322865] (TXN Antibody) at dilution 1/40, treated with synthetic peptide. (Original magnification:  $\times 200$ )



Immunohistochemistry of paraffin-embedded Human lung cancer tissue using [TA322865] (TXN Antibody) at dilution 1/40 (Original magnification:  $\times 200$ )



Immunohistochemistry of paraffin-embedded Human lung cancer tissue using [TA322865] (TXN Antibody) at dilution 1/40, treated with synthetic peptide. (Original magnification:  $\times 200$ )