

Product datasheet for **TA322861**

Sumo 1 (SUMO1) Rabbit Polyclonal Antibody

Product data:

Product Type:	Primary Antibodies
Applications:	IHC
Recommended Dilution:	IHC: 15-50 Positive control: Human lung cancer Predicted cell location: Cytoplasm, Nucleus
Reactivity:	Human, Mouse, Rat
Host:	Rabbit
Isotype:	IgG
Clonality:	Polyclonal
Immunogen:	Synthetic peptide corresponding to a region derived from 56-70 amino acids of Human SMT3 suppressor of mif two 3 homolog 1 (<i>S. cerevisiae</i>)
Formulation:	PBS pH7.3, 0.05% NaN ₃ , 50% glycerol
Concentration:	lot specific
Purification:	Antigen affinity purification
Conjugation:	Unconjugated
Storage:	Store at -20°C as received.
Stability:	Stable for 12 months from date of receipt.
Gene Name:	small ubiquitin-like modifier 1
Database Link:	NP_003343 Entrez Gene 22218 MouseEntrez Gene 301442 RatEntrez Gene 7341 Human P63165



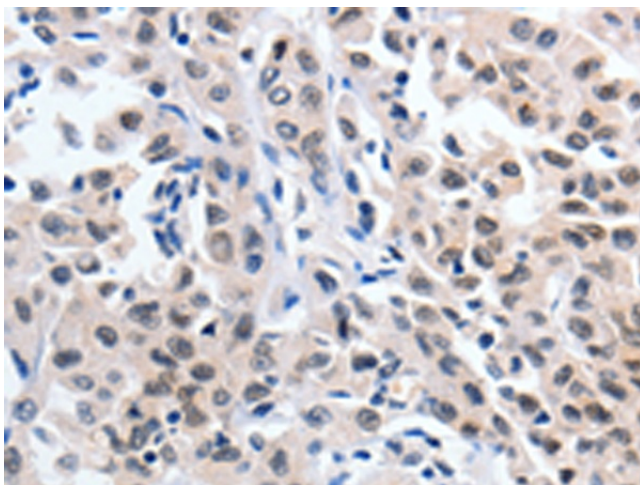
[View online »](#)

Background: This gene encodes a protein that is a member of the SUMO (small ubiquitin-like modifier) protein family. It functions in a manner similar to ubiquitin in that it is bound to target proteins as part of a post-translational modification system. However; unlike ubiquitin which targets proteins for degradation; this protein is involved in a variety of cellular processes; such as nuclear transport; transcriptional regulation; apoptosis; and protein stability. It is not active until the last four amino acids of the carboxy-terminus have been cleaved off. Several pseudogenes have been reported for this gene. Alternate transcriptional splice variants encoding different isoforms have been characterized.

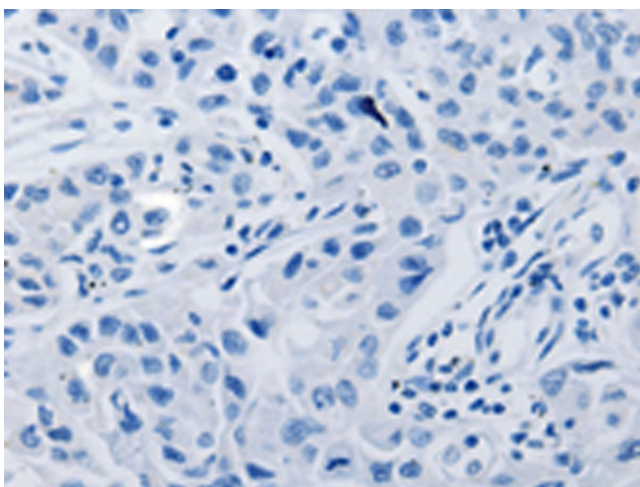
Synonyms: DAP1; GMP1; OFC10; PIC1; SENP2; SMT3; SMT3C; SMT3H3; UBL1

Protein Families: Druggable Genome, Stem cell - Pluripotency, Transcription Factors

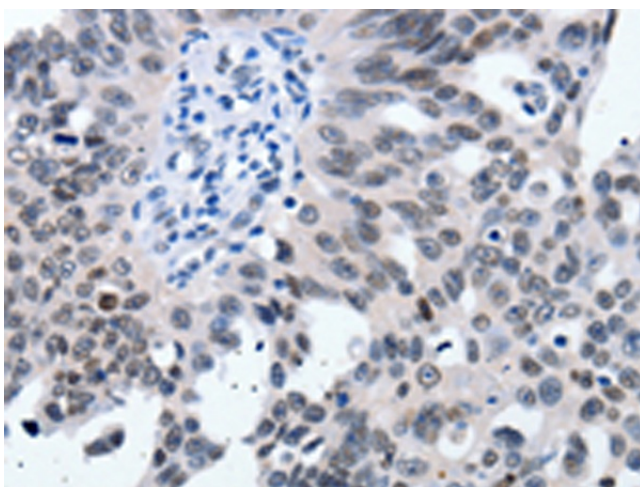
Product images:



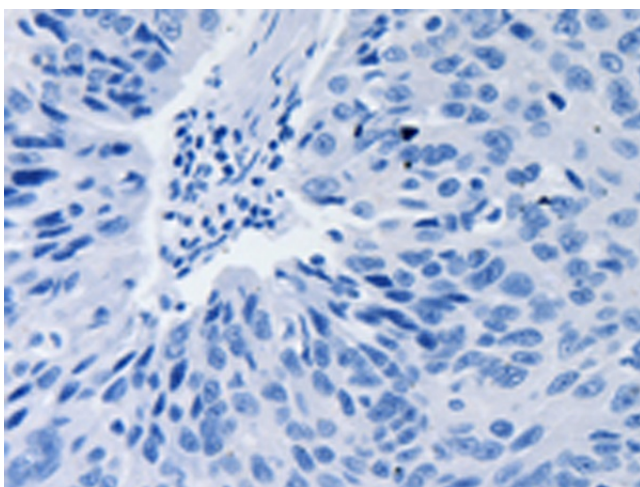
Immunohistochemistry of paraffin-embedded Human lung cancer tissue using TA322861 (SUMO1 Antibody) at dilution 1/20 (Original magnification: $\times 200$)



Immunohistochemistry of paraffin-embedded Human lung cancer tissue using TA322861 (SUMO1 Antibody) at dilution 1/20, treated with synthetic peptide. (Original magnification: $\times 200$)



Immunohistochemistry of paraffin-embedded Human ovarian cancer tissue using TA322861 (SUMO1 Antibody) at dilution 1/20 (Original magnification: $\times 200$)



Immunohistochemistry of paraffin-embedded Human ovarian cancer tissue using TA322861 (SUMO1 Antibody) at dilution 1/20, treated with synthetic peptide. (Original magnification: $\times 200$)