

Product datasheet for **TA322858S**

VDAC1 Rabbit Polyclonal Antibody

Product data:

Product Type:	Primary Antibodies
Applications:	IHC, WB
Recommended Dilution:	WB: 500-2000 WB positive control: Hela cells IHC: 25-100 Positive control: Human esophagus cancer Predicted cell location: Cytoplasm
Reactivity:	Human, Mouse, Rat
Host:	Rabbit
Isotype:	IgG
Clonality:	Polyclonal
Immunogen:	Synthetic peptide corresponding to a region derived from 185-197 amino acids of human voltage-dependent anion channel 1
Formulation:	PBS pH7.3, 0.05% NaN ₃ , 50% glycerol
Purification:	Antigen affinity purification
Conjugation:	Unconjugated
Storage:	Store at -20°C as received.
Stability:	Stable for 12 months from date of receipt.
Predicted Protein Size:	30 kDa
Gene Name:	voltage dependent anion channel 1
Database Link:	NP_003365 Entrez Gene 22333 Mouse Entrez Gene 83529 Rat Entrez Gene 7416 Human P21796



[View online »](#)

Background: This gene encodes a voltage-dependent anion channel protein that is a major component of the outer mitochondrial membrane. The encoded protein facilitates the exchange of metabolites and ions across the outer mitochondrial membrane and may regulate mitochondrial functions. This protein also forms channels in the plasma membrane and may be involved in transmembrane electron transport. Alternate splicing results in multiple transcript variants. Multiple pseudogenes of this gene are found on chromosomes 1; 2 3; 6; 9; 12; X and Y.

Synonyms: PORIN; VDAC-1

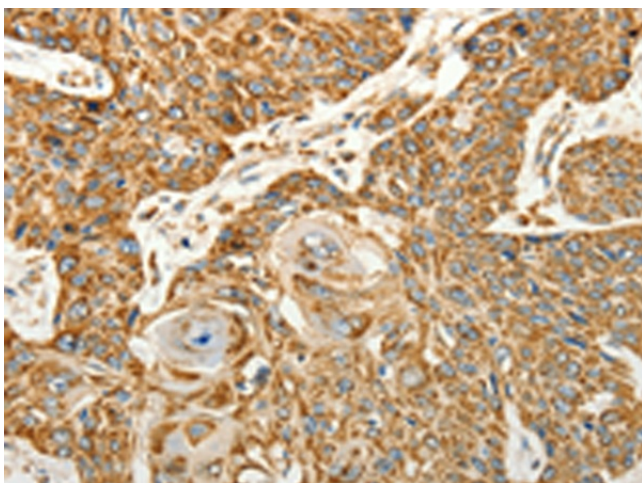
Protein Families: Ion Channels: Other

Protein Pathways: Calcium signaling pathway, Huntington's disease, Parkinson's disease

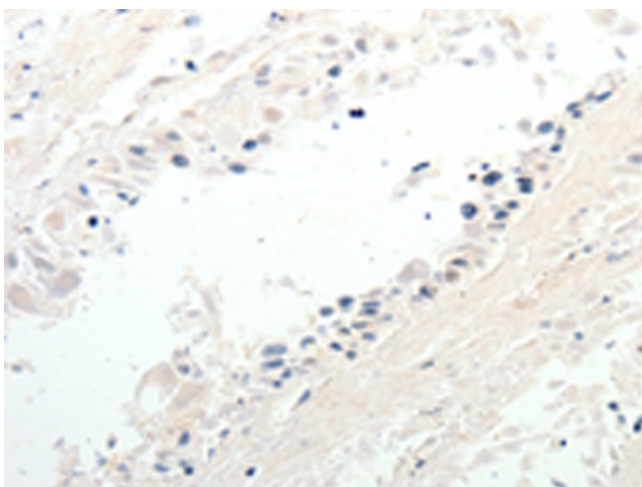
Product images:



Gel: 10%SDS-PAGE
Lysate: 40 µg
Lane: HeLa cells
Primary antibody: [TA322858] (VDAC1 Antibody) at dilution 1/500
Secondary antibody: Goat anti rabbit IgG at 1/8000 dilution
Exposure time: 5 seconds



Immunohistochemistry of paraffin-embedded Human esophagus cancer tissue using [TA322858] (VDAC1 Antibody) at dilution 1/13 (Original magnification: ×200)



Immunohistochemistry of paraffin-embedded Human esophagus cancer tissue using [TA322858] (VDAC1 Antibody) at dilution 1/13, treated with synthetic peptide. (Original magnification: $\times 200$)