

## Product datasheet for **TA322854S**

### 14-3-3 beta (YWHAB) Rabbit Polyclonal Antibody

#### Product data:

Product Type:	Primary Antibodies
Applications:	IHC, WB
Recommended Dilution:	WB: 500-2000 WB positive control: Hela cells and mouse kidney tissue IHC: 25-100 Positive control: Human lung cancer Predicted cell location: Cytoplasm, Nucleus
Reactivity:	Human, Mouse, Rat
Host:	Rabbit
Isotype:	IgG
Clonality:	Polyclonal
Immunogen:	Synthetic peptide corresponding to a region derived from 72-87 amino acids of Human tyrosine 3-monooxygenase/tryptophan 5-monooxygenase activation protein, beta polypeptide
Formulation:	PBS pH7.3, 0.05% NaN <sub>3</sub> , 50% glycerol
Purification:	Antigen affinity purification
Conjugation:	Unconjugated
Storage:	Store at -20°C as received.
Stability:	Stable for 12 months from date of receipt.
Predicted Protein Size:	28 kDa
Gene Name:	tyrosine 3-monooxygenase/tryptophan 5-monooxygenase activation protein beta
Database Link:	<a href="#">NP_003395</a> <a href="#">Entrez Gene 54401 Mouse</a> <a href="#">Entrez Gene 56011 Rat</a> <a href="#">Entrez Gene 7529 Human</a> <a href="#">P31946</a>



[View online »](#)

**Background:**

This gene encodes a protein belonging to the 14-3-3 family of proteins; members of which mediate signal transduction by binding to phosphoserine-containing proteins. This highly conserved protein family is found in both plants and mammals. The encoded protein has been shown to interact with RAF1 and CDC25 phosphatases; suggesting that it may play a role in linking mitogenic signaling and the cell cycle machinery. Two transcript variants; which encode the same protein; have been identified for this gene.

**Synonyms:**

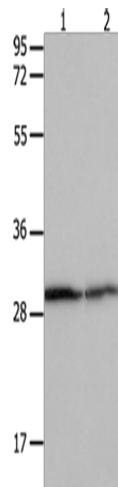
GW128; HEL-S-1; HS1; KCIP-1; YWHAA

**Protein Families:**

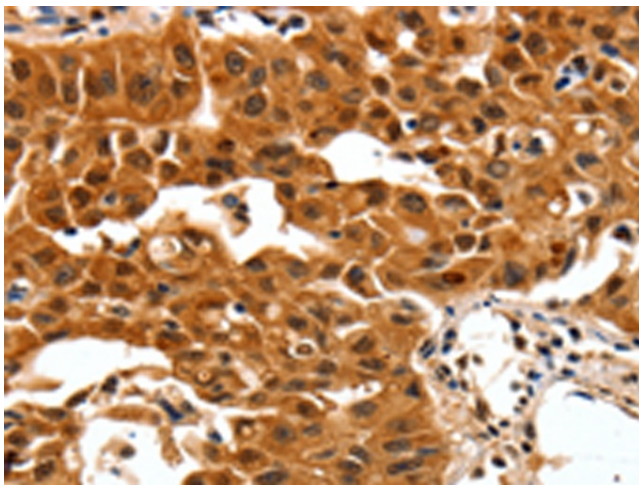
Druggable Genome

**Protein Pathways:**

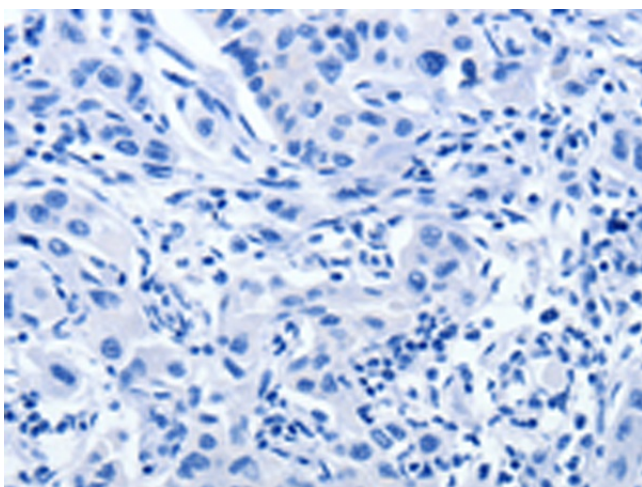
Cell cycle, Neurotrophin signaling pathway, Oocyte meiosis

**Product images:**

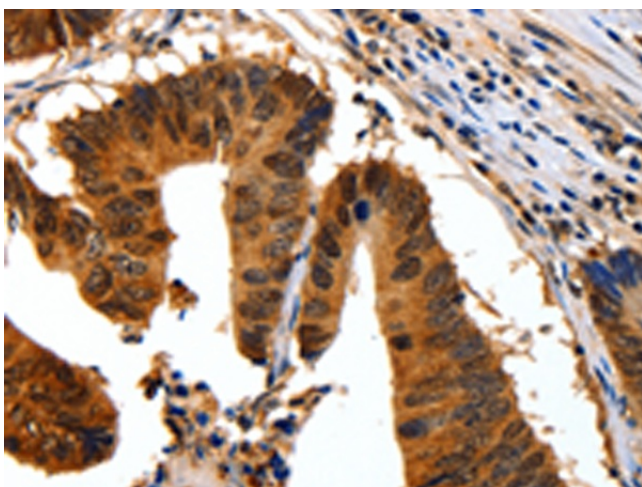
Gel: 12%SDS-PAGE  
Lysate: 30 µg  
Lane 1-2: HeLa cells  
mouse kidney tissue  
Primary antibody: [TA322854] (YWHAB Antibody)  
at dilution 1/550  
Secondary antibody: Goat anti rabbit IgG at  
1/8000 dilution  
Exposure time: 10 seconds



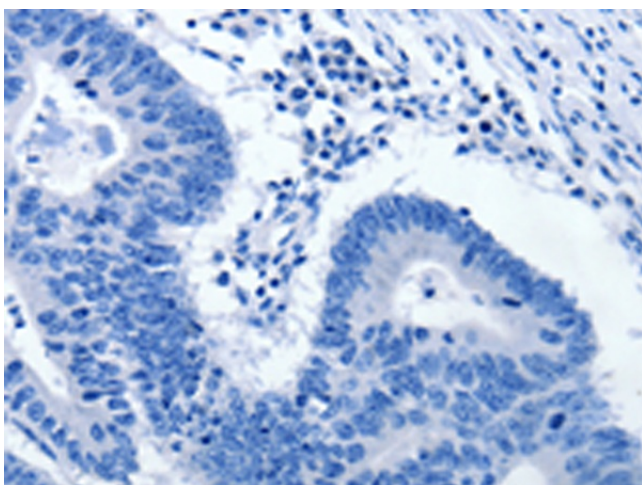
Immunohistochemistry of paraffin-embedded  
Human lung cancer tissue using [TA322854]  
(YWHAB Antibody) at dilution 1/30 (Original  
magnification: ×200)



Immunohistochemistry of paraffin-embedded Human lung cancer tissue using [TA322854] (YWHAB Antibody) at dilution 1/30, treated with synthetic peptide. (Original magnification:  $\times 200$ )



Immunohistochemistry of paraffin-embedded Human colon cancer tissue using [TA322854] (YWHAB Antibody) at dilution 1/30 (Original magnification:  $\times 200$ )



Immunohistochemistry of paraffin-embedded Human colon cancer tissue using [TA322854] (YWHAB Antibody) at dilution 1/30, treated with synthetic peptide. (Original magnification:  $\times 200$ )