

Product datasheet for **TA322850S**

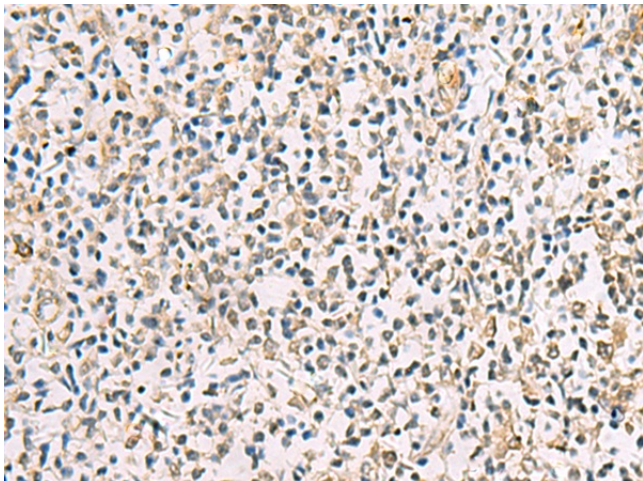
ADAM12 Rabbit Polyclonal Antibody

Product data:

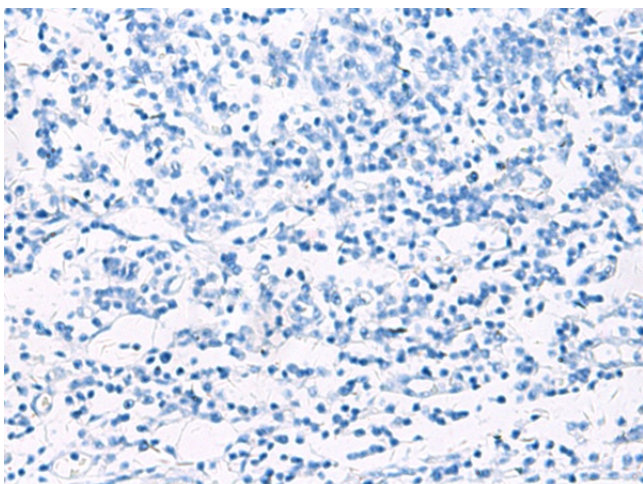
Product Type:	Primary Antibodies
Applications:	IHC
Recommended Dilution:	IHC: 25-50 Positive control: Human tonsil Predicted cell location: Secreted
Reactivity:	Human, Mouse
Host:	Rabbit
Isotype:	IgG
Clonality:	Polyclonal
Immunogen:	Synthetic peptide corresponding to a region derived from 223-239 amino acids of human ADAM metallopeptidase domain 12
Formulation:	PBS pH7.3, 0.05% NaN ₃ , 50% glycerol
Purification:	Antigen affinity purification
Conjugation:	Unconjugated
Storage:	Store at -20°C as received.
Stability:	Stable for 12 months from date of receipt.
Gene Name:	ADAM metallopeptidase domain 12
Database Link:	NP_003465 Entrez Gene 11489 Mouse Entrez Gene 8038 Human O43184
Background:	This gene encodes a member of the ADAM (a disintegrin and metalloprotease) protein family. Members of this family are membrane-anchored proteins structurally related to snake venom disintegrins; and have been implicated in a variety of biological processes involving cell-cell and cell-matrix interactions; including fertilization; muscle development; and neurogenesis. This gene has two alternatively spliced transcripts: a shorter secreted form and a longer membrane-bound form. The shorter form is found to stimulate myogenesis.
Synonyms:	ADAM12-OT1; CAR10; MCMP; MCMPMItna; MLTN; MLTNA
Protein Families:	Druggable Genome, Protease, Secreted Protein, Transmembrane



[View online »](#)

Product images:

Immunohistochemistry of paraffin-embedded Human tonsil tissue using [TA322850] (ADAM12 Antibody) at dilution 1/20 (Original magnification: ×200)



Immunohistochemistry of paraffin-embedded Human tonsil tissue using [TA322850] (ADAM12 Antibody) at dilution 1/20, treated with synthetic peptide. (Original magnification: ×200)