

## Product datasheet for **TA322850**

### ADAM12 Rabbit Polyclonal Antibody

#### Product data:

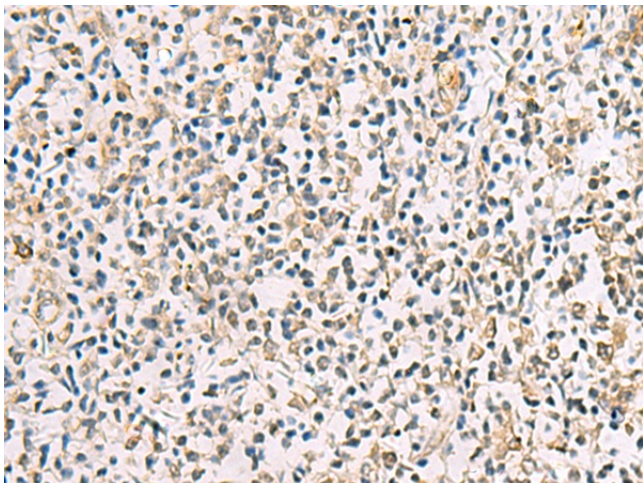
Product Type:	Primary Antibodies
Applications:	IHC
Recommended Dilution:	IHC: 25-50 Positive control: Human tonsil Predicted cell location: Secreted
Reactivity:	Human, Mouse
Host:	Rabbit
Isotype:	IgG
Clonality:	Polyclonal
Immunogen:	Synthetic peptide corresponding to a region derived from 223-239 amino acids of human ADAM metalloproteinase domain 12
Formulation:	PBS pH7.3, 0.05% NaN <sub>3</sub> , 50% glycerol
Concentration:	lot specific
Purification:	Antigen affinity purification
Conjugation:	Unconjugated
Storage:	Store at -20°C as received.
Stability:	Stable for 12 months from date of receipt.
Gene Name:	ADAM metalloproteinase domain 12
Database Link:	<a href="#">NP_003465</a> <a href="#">Entrez Gene 11489 Mouse</a> <a href="#">Entrez Gene 8038 Human</a> <a href="#">O43184</a>
Background:	This gene encodes a member of the ADAM (a disintegrin and metalloprotease) protein family. Members of this family are membrane-anchored proteins structurally related to snake venom disintegrins; and have been implicated in a variety of biological processes involving cell-cell and cell-matrix interactions; including fertilization; muscle development; and neurogenesis. This gene has two alternatively spliced transcripts: a shorter secreted form and a longer membrane-bound form. The shorter form is found to stimulate myogenesis.
Synonyms:	ADAM12-OT1; CAR10; MCMP; MCMPItna; MLTN; MLTNA



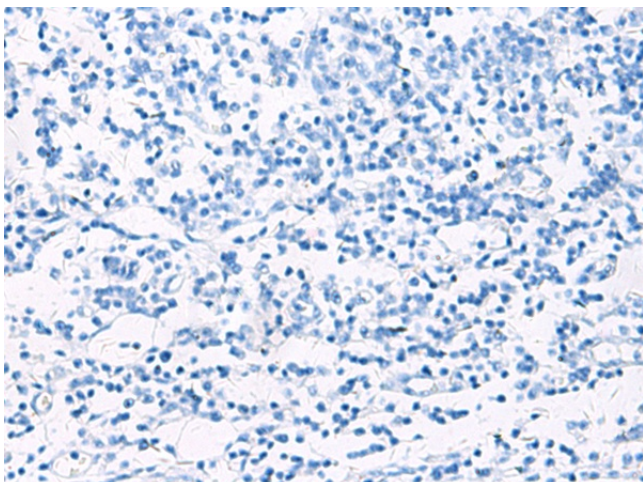
[View online »](#)

Protein Families: Druggable Genome, Protease, Secreted Protein, Transmembrane

### Product images:



Immunohistochemistry of paraffin-embedded Human tonsil tissue using TA322850 (ADAM12 Antibody) at dilution 1/20 (Original magnification: ×200)



Immunohistochemistry of paraffin-embedded Human tonsil tissue using TA322850 (ADAM12 Antibody) at dilution 1/20, treated with synthetic peptide. (Original magnification: ×200)