

Product datasheet for **TA322847**

Frizzled homolog 1 (FZD1) Rabbit Polyclonal Antibody

Product data:

Product Type:	Primary Antibodies
Applications:	WB
Recommended Dilution:	ELISA: 1:1000-2000, WB: 1:200-1000
Reactivity:	Human, Mouse, Rat
Host:	Rabbit
Isotype:	IgG
Clonality:	Polyclonal
Immunogen:	Synthetic peptide corresponding to a region derived from 1-14 amino acids of human frizzled family receptor 1
Formulation:	PBS pH7.3, 0.05% NaN ₃ , 50% glycerol
Concentration:	lot specific
Purification:	Antigen affinity purification
Conjugation:	Unconjugated
Storage:	Store at -20°C as received.
Stability:	Stable for 12 months from date of receipt.
Predicted Protein Size:	71 kDa
Gene Name:	frizzled class receptor 1
Database Link:	NP_003496 Entrez Gene 14362 Mouse Entrez Gene 58868 Rat Entrez Gene 8321 Human Q9UP38
Background:	Members of the 'frizzled' gene family encode 7-transmembrane domain proteins that are receptors for Wnt signaling proteins. The FZD1 protein contains a signal peptide; a cysteine-rich domain in the N-terminal extracellular region; 7 transmembrane domains; and a C-terminal PDZ domain-binding motif. The FZD1 transcript is expressed in various tissues. May be involved in transduction and intercellular transmission of polarity information during tissue morphogenesis and/or in differentiated tissues. Activated by Wnt3A; Wnt3; Wnt1 and to a lesser extent Wnt2; but not by Wnt4; Wnt5A; Wnt5B; Wnt6; Wnt7A or Wnt7B.
Synonyms:	DKFZp564G072; FLJ95923

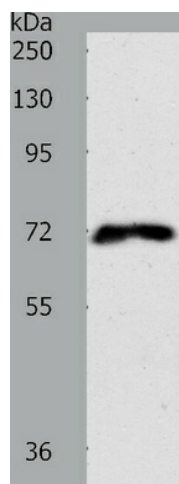


[View online »](#)

Protein Families: Druggable Genome, GPCR, Transmembrane

Protein Pathways: Basal cell carcinoma, Colorectal cancer, Melanogenesis, Pathways in cancer, Wnt signaling pathway

Product images:



Predicted band size: 71 kDa. Positive control: 293T cell lysate. Recommended dilution: 1/200-1000. (Gel: 8%SDS-PAGE Lysate: 40 ug per lane Primary antibody: 1/500 dilution Secondary antibody: Goat anti Rabbit IgG - H&L (HRP) at 1/10000 dilution Exposure time: 1 minute)