

Product datasheet for **TA322843**

EEA1 Rabbit Polyclonal Antibody

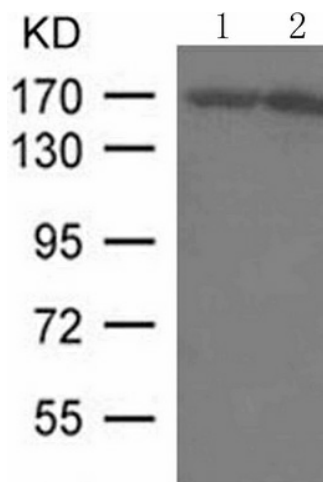
Product data:

Product Type:	Primary Antibodies
Applications:	WB
Recommended Dilution:	WB: 1:500-1000
Reactivity:	Human, Mouse, Rat
Host:	Rabbit
Isotype:	IgG
Clonality:	Polyclonal
Immunogen:	Peptide sequence around aa.12~16(R-V-G-S-Q)derived from Human EEA1.
Formulation:	PBS pH7.3, 0.05% NaN ₃ , 50% glycerol
Concentration:	lot specific
Purification:	Antigen affinity purification
Conjugation:	Unconjugated
Storage:	Store at -20°C as received.
Stability:	Stable for 12 months from date of receipt.
Predicted Protein Size:	162 kDa
Gene Name:	early endosome antigen 1
Database Link:	NP_003557 Entrez Gene 216238 MouseEntrez Gene 314764 RatEntrez Gene 8411 Human Q15075
Background:	Binds phospholipid vesicles containing phosphatidylinositol 3-phosphate and participates in endosomal trafficking. This protein contains one C2H2-type zinc finger and one FYVE-type zinc finger.
Synonyms:	MST105; MSTP105; ZFYVE2
Protein Pathways:	Endocytosis



[View online »](#)

Product images:



Predicted band size: 162 kDa. Positive control: Jurkat, HL-60 cells lysate. Recommended dilution: 1/ 500-1000. (Gel: 8%SDS-PAGE Lane 1, 2: Jurkat, HL-60 cells lysate Lysates: 30 ug per lane Primary antibody: 1/500 dilution Secondary antibody: Goat anti Rabbit IgG - H&L (HRP) at 1/10000 dilution Exposure time: 1 minute)