

## Product datasheet for **TA322842**

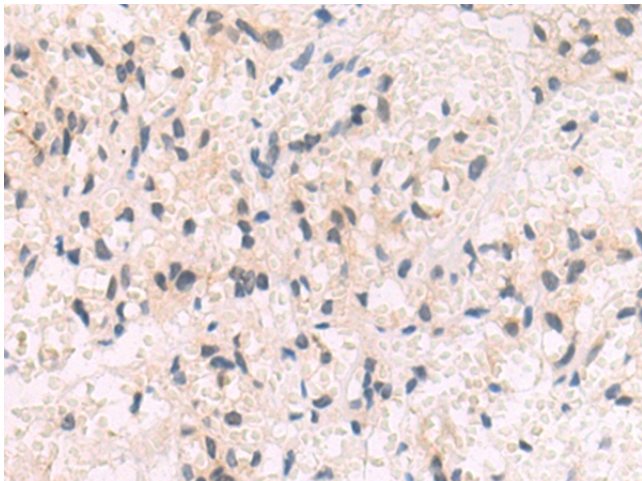
### TTF2 Rabbit Polyclonal Antibody

#### Product data:

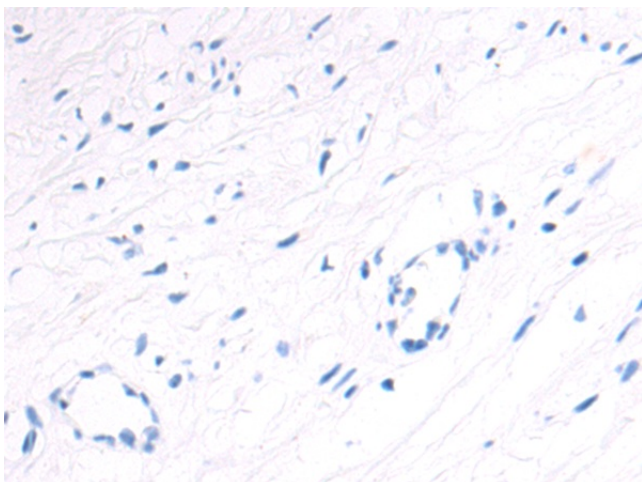
Product Type:	Primary Antibodies
Applications:	IHC
Recommended Dilution:	IHC: 50-100 Positive control: Human prostate cancer Predicted cell location: Cytoplasm
Reactivity:	Human
Host:	Rabbit
Isotype:	IgG
Clonality:	Polyclonal
Immunogen:	Synthetic peptide corresponding to a region derived from 97-110 amino acids of human transcription termination factor, RNA polymerase II
Formulation:	PBS pH7.3, 0.05% NaN <sub>3</sub> , 50% glycerol
Concentration:	lot specific
Purification:	Antigen affinity purification
Conjugation:	Unconjugated
Storage:	Store at -20°C as received.
Stability:	Stable for 12 months from date of receipt.
Gene Name:	transcription termination factor 2
Database Link:	<a href="#">NP_003585</a> <a href="#">Entrez Gene 8458 Human</a> <a href="#">Q9UNY4</a>
Background:	This gene encodes a member of the SWI2/SNF2 family of proteins; which play a critical role in altering protein-DNA interactions. The encoded protein has been shown to have dsDNA-dependent ATPase activity and RNA polymerase II termination activity. This protein interacts with cell division cycle 5-like; associates with human splicing complexes; and plays a role in pre-mRNA splicing.
Synonyms:	HuF2; ZGRF6
Protein Families:	Transcription Factors



[View online »](#)

**Product images:**

Immunohistochemistry of paraffin-embedded Human prostate cancer tissue using TA322842 (TTF2 Antibody) at dilution 1/50 (Original magnification:  $\times 200$ )



Immunohistochemistry of paraffin-embedded Human prostate cancer tissue using TA322842 (TTF2 Antibody) at dilution 1/50, treated with synthetic peptide. (Original magnification:  $\times 200$ )