

## Product datasheet for **TA322839S**

### Cullin 2 (CUL2) Rabbit Polyclonal Antibody

#### Product data:

Product Type:	Primary Antibodies
Applications:	WB
Recommended Dilution:	WB: 500-2000 WB positive control: PC3 cells
Reactivity:	Human, Mouse
Host:	Rabbit
Isotype:	IgG
Clonality:	Polyclonal
Immunogen:	Synthetic peptide corresponding to a region derived from 214-228 amino acids of Human cullin 2
Formulation:	PBS pH7.3, 0.05% NaN <sub>3</sub> , 50% glycerol
Purification:	Antigen affinity purification
Conjugation:	Unconjugated
Storage:	Store at -20°C as received.
Stability:	Stable for 12 months from date of receipt.
Predicted Protein Size:	87 kDa
Gene Name:	cullin 2
Database Link:	<a href="#">NP_003582</a> <a href="#">Entrez Gene 71745 Mouse</a> <a href="#">Entrez Gene 8453 Human</a> <a href="#">Q13617</a>



[View online »](#)

**Background:**

Human CUL2 is an ortholog of nematode cul2. Michel and Xiong (1998) identified human CUL2 cDNAs and reported that the predicted protein is 745 amino acids long. Core component of multiple cullin-RING-based ECS (ElonginB/C-CUL2/5-SOCS-box protein) E3 ubiquitin-protein ligase complexes; which mediate the ubiquitination of target proteins. May serve as a rigid scaffold in the complex and may contribute to catalysis through positioning of the substrate and the ubiquitin-conjugating enzyme. The E3 ubiquitin-protein ligase activity of the complex is dependent on the neddylation of the cullin subunit and is inhibited by the association of the deneddylated cullin subunit with TIP120A/CAND1. By similarity. The functional specificity of the ECS complex depends on the substrate recognition component. ECS(VHL) mediates the ubiquitination of hypoxia-inducible factor (HIF).

**Synonyms:**

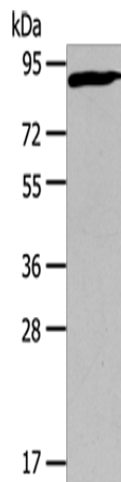
MGC131970

**Protein Families:**

Druggable Genome

**Protein Pathways:**

Pathways in cancer, Renal cell carcinoma, Ubiquitin mediated proteolysis

**Product images:**

Gel: 6%SDS-PAGE

Lysate: 40 µg

Lane: PC3 cells

Primary antibody: [TA322839] (CUL2 Antibody) at dilution 1/440

Secondary antibody: Goat anti rabbit IgG at 1/8000 dilution

Exposure time: 3 minutes