

## Product datasheet for **TA322837**

### Gemin 2 (GEMIN2) Rabbit Polyclonal Antibody

#### Product data:

Product Type:	Primary Antibodies
Applications:	IHC
Recommended Dilution:	IHC: 50-200 Positive control: Human breast cancer Predicted cell location: Cytoplasm
Reactivity:	Human, Mouse, Rat
Host:	Rabbit
Isotype:	IgG
Clonality:	Polyclonal
Immunogen:	Synthetic peptide corresponding to a region derived from 264-280 amino acids of human gem (nuclear organelle) associated protein 2
Formulation:	PBS pH7.3, 0.05% NaN <sub>3</sub> , 50% glycerol
Concentration:	lot specific
Purification:	Antigen affinity purification
Conjugation:	Unconjugated
Storage:	Store at -20°C as received.
Stability:	Stable for 12 months from date of receipt.
Gene Name:	gem nuclear organelle associated protein 2
Database Link:	<a href="#">NP_003607</a> <a href="#">Entrez Gene 66603 MouseEntrez Gene 84404 RatEntrez Gene 8487 Human O14893</a>
Background:	This gene encodes one of the proteins found in the SMN complex; which consists of several gemin proteins and the protein known as the survival of motor neuron protein. The SMN complex is localized to a subnuclear compartment called gems (gemini of coiled bodies) and is required for assembly of spliceosomal snRNPs and for pre-mRNA splicing. This protein interacts directly with the survival of motor neuron protein and it is required for formation of the SMN complex. A knockout mouse targeting the mouse homolog of this gene exhibited disrupted snRNP assembly and motor neuron degeneration.

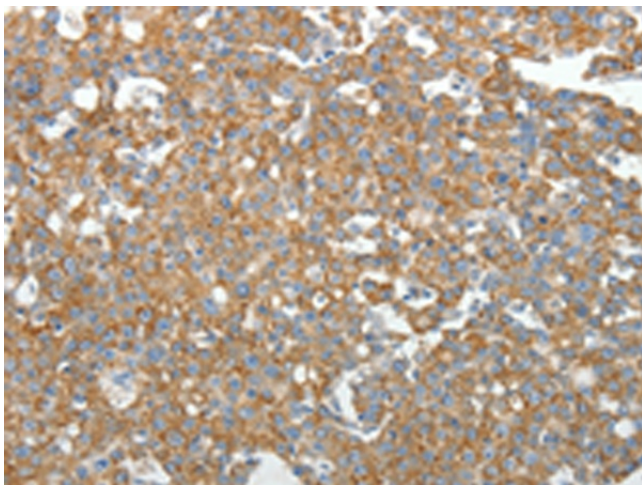


[View online »](#)

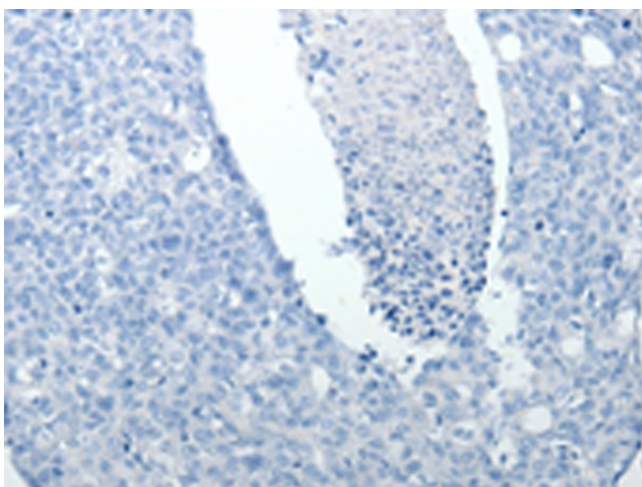
Synonyms: SIP1; SIP1-delta

Protein Families: Druggable Genome, Stem cell - Pluripotency

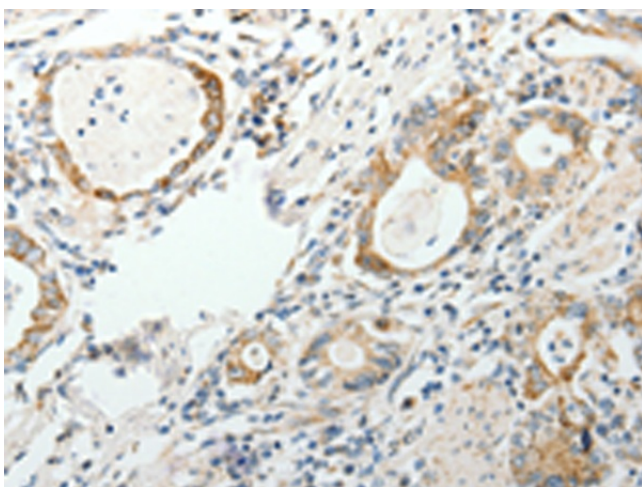
**Product images:**



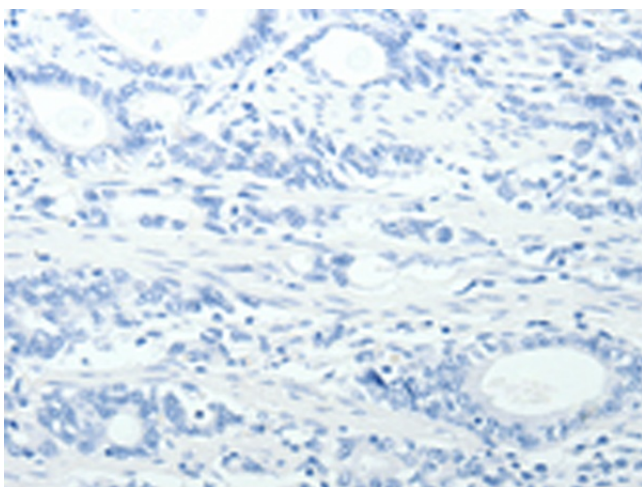
Immunohistochemistry of paraffin-embedded Human breast cancer tissue using TA322837 (GEMIN2 Antibody) at dilution 1/40 (Original magnification:  $\times 200$ )



Immunohistochemistry of paraffin-embedded Human breast cancer tissue using TA322837 (GEMIN2 Antibody) at dilution 1/40, treated with synthetic peptide. (Original magnification:  $\times 200$ )



Immunohistochemistry of paraffin-embedded Human gastric cancer tissue using TA322837 (GEMIN2 Antibody) at dilution 1/40 (Original magnification:  $\times 200$ )



Immunohistochemistry of paraffin-embedded Human gastric cancer tissue using TA322837 (GEMIN2 Antibody) at dilution 1/40, treated with synthetic peptide. (Original magnification:  $\times 200$ )