

Product datasheet for **TA322836**

Gemin 2 (GEMIN2) Rabbit Polyclonal Antibody

Product data:

Product Type:	Primary Antibodies
Applications:	IHC, WB
Recommended Dilution:	WB: 200-1000 WB positive control: K562 and hela cells IHC: 50-200 Positive control: Human ovarian cancer Predicted cell location: Cytoplasm
Reactivity:	Human, Mouse, Rat
Host:	Rabbit
Isotype:	IgG
Clonality:	Polyclonal
Immunogen:	Synthetic peptide corresponding to a region derived from 264-280 amino acids of human gem (nuclear organelle) associated protein 2
Formulation:	PBS pH7.3, 0.05% NaN ₃ , 50% glycerol
Concentration:	lot specific
Purification:	Antigen affinity purification
Conjugation:	Unconjugated
Storage:	Store at -20°C as received.
Stability:	Stable for 12 months from date of receipt.
Predicted Protein Size:	32 kDa
Gene Name:	gem nuclear organelle associated protein 2
Database Link:	NP_003607 Entrez Gene 66603 Mouse Entrez Gene 84404 Rat Entrez Gene 8487 Human O14893



[View online »](#)

Background:

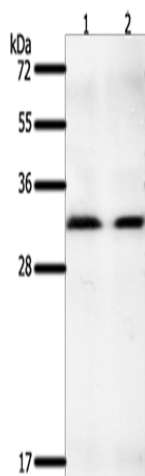
This gene encodes one of the proteins found in the SMN complex; which consists of several gemin proteins and the protein known as the survival of motor neuron protein. The SMN complex is localized to a subnuclear compartment called gems (gemini of coiled bodies) and is required for assembly of spliceosomal snRNPs and for pre-mRNA splicing. This protein interacts directly with the survival of motor neuron protein and it is required for formation of the SMN complex. A knockout mouse targeting the mouse homolog of this gene exhibited disrupted snRNP assembly and motor neuron degeneration.

Synonyms:

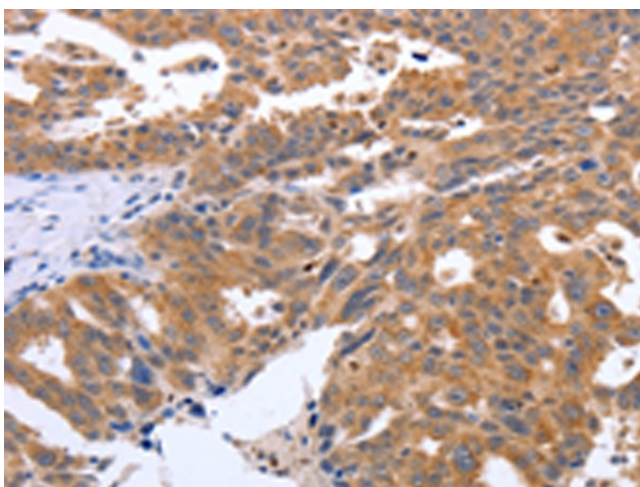
SIP1; SIP1-delta

Protein Families:

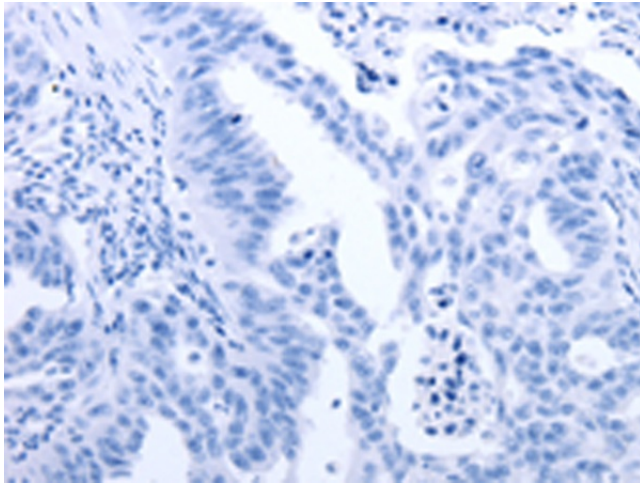
Druggable Genome, Stem cell - Pluripotency

Product images:

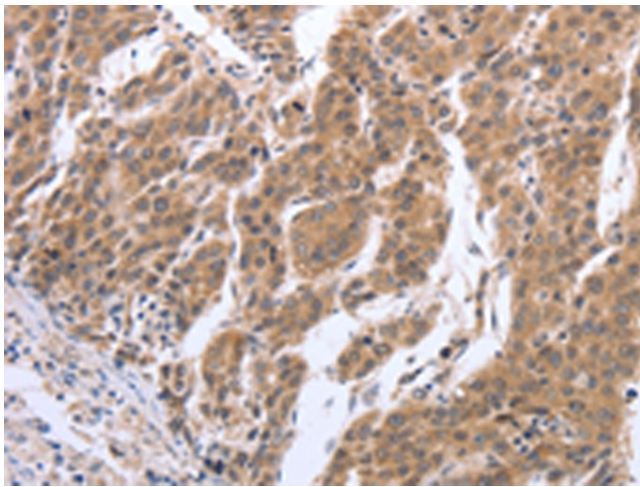
Gel: 10%SDS-PAGE
Lysate: 40 µg
Lane 1-2: K562 cells
hela cells
Primary antibody: TA322836 (GEMIN2 Antibody)
at dilution 1/400
Secondary antibody: Goat anti rabbit IgG at
1/8000 dilution
Exposure time: 2 minutes



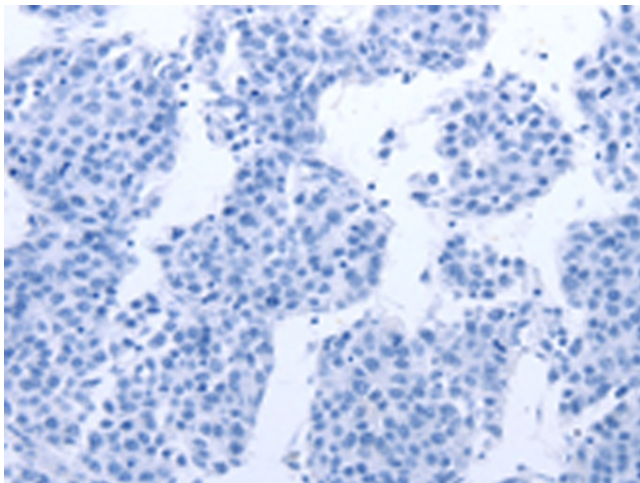
Immunohistochemistry of paraffin-embedded
Human ovarian cancer tissue using TA322836
(GEMIN2 Antibody) at dilution 1/40 (Original
magnification: ×200)



Immunohistochemistry of paraffin-embedded Human ovarian cancer tissue using TA322836 (GEMIN2 Antibody) at dilution 1/40, treated with synthetic peptide. (Original magnification: ×200)



Immunohistochemistry of paraffin-embedded Human breast cancer tissue using TA322836 (GEMIN2 Antibody) at dilution 1/40 (Original magnification: ×200)



Immunohistochemistry of paraffin-embedded Human breast cancer tissue using TA322836 (GEMIN2 Antibody) at dilution 1/40, treated with synthetic peptide. (Original magnification: ×200)