

## Product datasheet for **TA322830S**

### PPAP2A (PLPP1) Rabbit Polyclonal Antibody

#### Product data:

Product Type:	Primary Antibodies
Applications:	IHC, WB
Recommended Dilution:	WB: 500-2000 WB positive control: Human liver cancer tissue IHC: 25-100 Positive control: Human breast cancer Predicted cell location: Cytoplasm
Reactivity:	Human, Mouse, Rat
Host:	Rabbit
Isotype:	IgG
Clonality:	Polyclonal
Immunogen:	Synthetic peptide corresponding to a region derived from 40-53 amino acids of human phosphatidic acid phosphatase type 2A
Formulation:	PBS pH7.3, 0.05% NaN <sub>3</sub> , 50% glycerol
Purification:	Antigen affinity purification
Conjugation:	Unconjugated
Storage:	Store at -20°C as received.
Stability:	Stable for 12 months from date of receipt.
Predicted Protein Size:	32 kDa
Gene Name:	phospholipid phosphatase 1
Database Link:	<a href="#">NP_003702</a> <a href="#">Entrez Gene 19012 Mouse</a> <a href="#">Entrez Gene 64369 Rat</a> <a href="#">Entrez Gene 8611 Human</a> <a href="#">O14494</a>



[View online »](#)

**Background:**

The protein encoded by this gene is a member of the phosphatidic acid phosphatase (PAP) family. PAPs convert phosphatidic acid to diacylglycerol; and function in de novo synthesis of glycerolipids as well as in receptor-activated signal transduction mediated by phospholipase D. This protein is an integral membrane glycoprotein; and has been shown to be a surface enzyme that plays an active role in the hydrolysis and uptake of lipids from extracellular space. The expression of this gene is found to be regulated by androgen in a prostatic adenocarcinoma cell line. At least two alternatively spliced transcript variants encoding distinct isoforms have been described.

**Synonyms:**

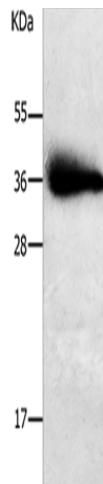
LLP1a; LPP1; PAP-2a; PAP2; PPAP2A

**Protein Families:**

Druggable Genome, Transmembrane

**Protein Pathways:**

Ether lipid metabolism, Fc gamma R-mediated phagocytosis, Glycerolipid metabolism, Glycerophospholipid metabolism, Metabolic pathways, Sphingolipid metabolism

**Product images:**

Gel: 10%SDS-PAGE

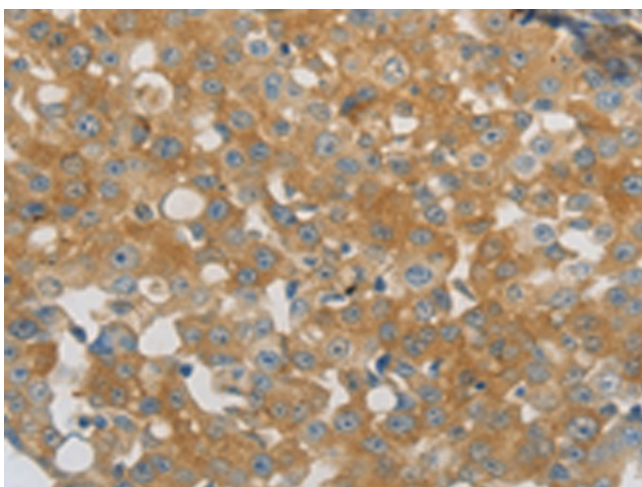
Lysate: 30 µg

Lane: Human liver cancer tissue

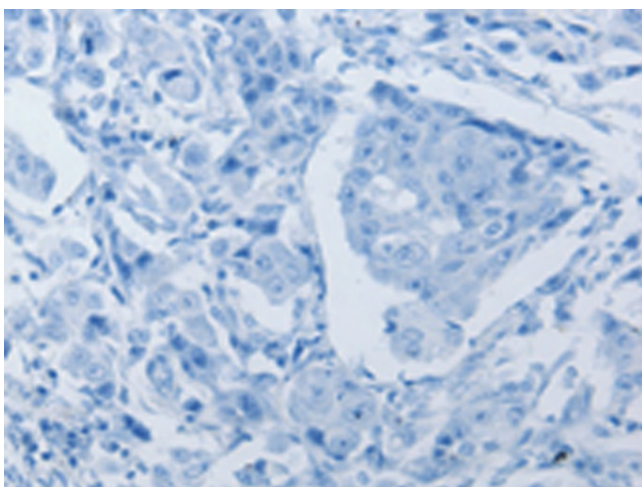
Primary antibody: [TA322830] (PLPP1 Antibody)  
at dilution 1/650

Secondary antibody: Goat anti rabbit IgG at  
1/8000 dilution

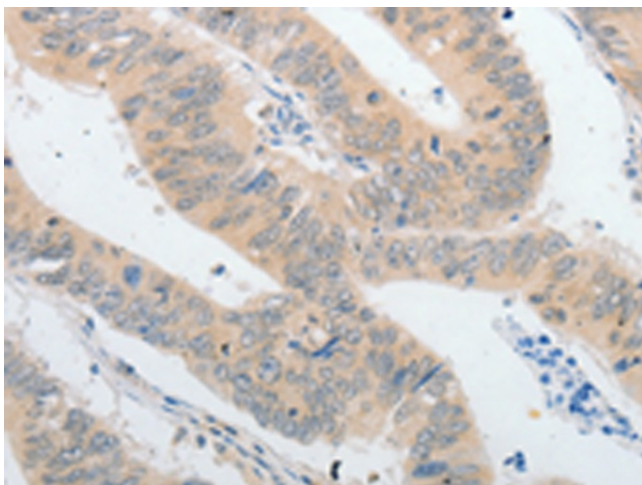
Exposure time: 1 second



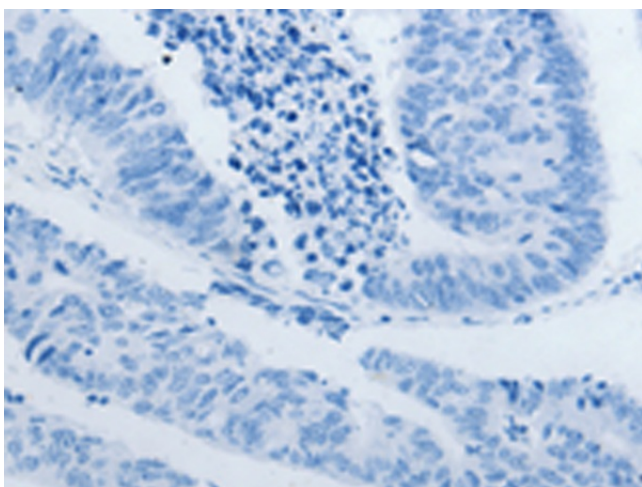
Immunohistochemistry of paraffin-embedded Human breast cancer tissue using [TA322830] (PLPP1 Antibody) at dilution 1/40 (Original magnification:  $\times 200$ )



Immunohistochemistry of paraffin-embedded Human breast cancer tissue using [TA322830] (PLPP1 Antibody) at dilution 1/40, treated with synthetic peptide. (Original magnification:  $\times 200$ )



Immunohistochemistry of paraffin-embedded Human colon cancer tissue using [TA322830] (PLPP1 Antibody) at dilution 1/40 (Original magnification:  $\times 200$ )



Immunohistochemistry of paraffin-embedded Human colon cancer tissue using [TA322830] (PLPP1 Antibody) at dilution 1/40, treated with synthetic peptide. (Original magnification: ×200)