

## Product datasheet for **TA322828S**

### Vesicle docking protein p115 (USO1) Rabbit Polyclonal Antibody

#### Product data:

Product Type:	Primary Antibodies
Applications:	IHC, WB
Recommended Dilution:	WB: 500-2000 WB positive control: Human fetal kidney tissue IHC: 25-100 Positive control: Human ovarian cancer Predicted cell location: Cytoplasm
Reactivity:	Human
Host:	Rabbit
Isotype:	IgG
Clonality:	Polyclonal
Immunogen:	Synthetic peptide corresponding to a region derived from 950-961 amino acids of human USO1 vesicle transport factor
Formulation:	PBS pH7.3, 0.05% NaN <sub>3</sub> , 50% glycerol
Purification:	Antigen affinity purification
Conjugation:	Unconjugated
Storage:	Store at -20°C as received.
Stability:	Stable for 12 months from date of receipt.
Predicted Protein Size:	108 kDa
Gene Name:	USO1 vesicle transport factor
Database Link:	<a href="#">NP_003706</a> <a href="#">Entrez Gene 8615 Human</a> <a href="#">O60763</a>



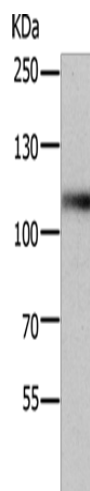
[View online »](#)

**Background:**

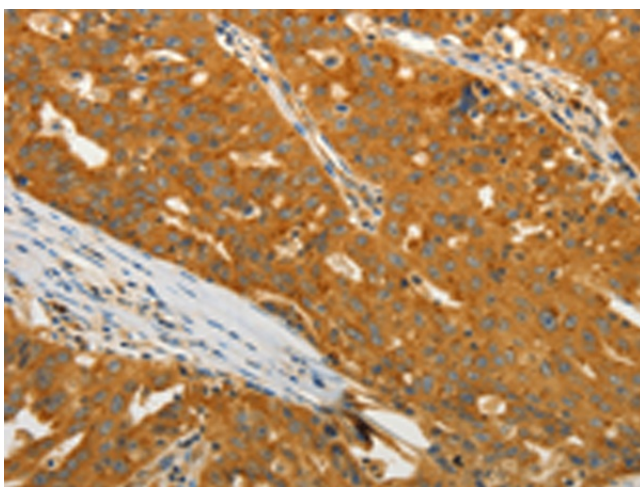
The protein encoded by this gene is a peripheral membrane protein which recycles between the cytosol and the Golgi apparatus during interphase. It is regulated by phosphorylation: dephosphorylated protein associates with the Golgi membrane and dissociates from the membrane upon phosphorylation. Ras-associated protein 1 recruits this protein to coat protein complex II (COPII) vesicles during budding from the endoplasmic reticulum; where it interacts with a set of COPII vesicle-associated SNAREs to form a cis-SNARE complex that promotes targeting to the Golgi apparatus. Transport from the ER to the cis/medial Golgi compartments requires the action of this gene product; GM130 and giantin in a sequential manner.

**Synonyms:**

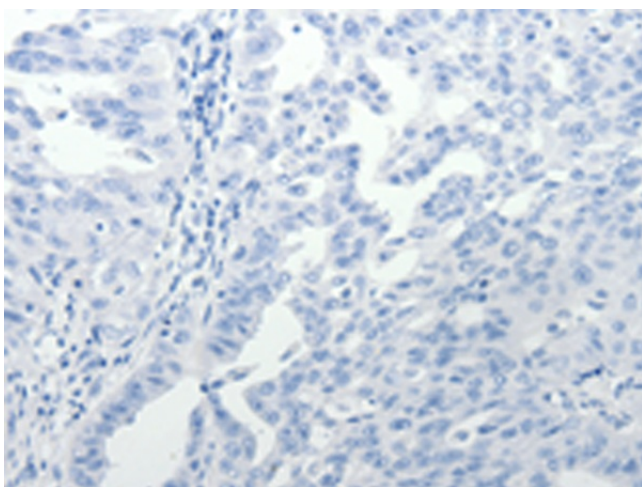
P115; TAP; VDP

**Product images:**

Gel: 8%SDS-PAGE  
Lysate: 40 µg  
Lane: Human fetal kidney tissue  
Primary antibody: [TA322828] (USO1 Antibody) at dilution 1/400  
Secondary antibody: Goat anti rabbit IgG at 1/8000 dilution  
Exposure time: 5 seconds



Immunohistochemistry of paraffin-embedded Human ovarian cancer tissue using [TA322828] (USO1 Antibody) at dilution 1/13 (Original magnification: ×200)



Immunohistochemistry of paraffin-embedded Human ovarian cancer tissue using [TA322828] (USO1 Antibody) at dilution 1/13, treated with synthetic peptide. (Original magnification: ×200)