

Product datasheet for **TA322827**

ABCB11 Rabbit Polyclonal Antibody

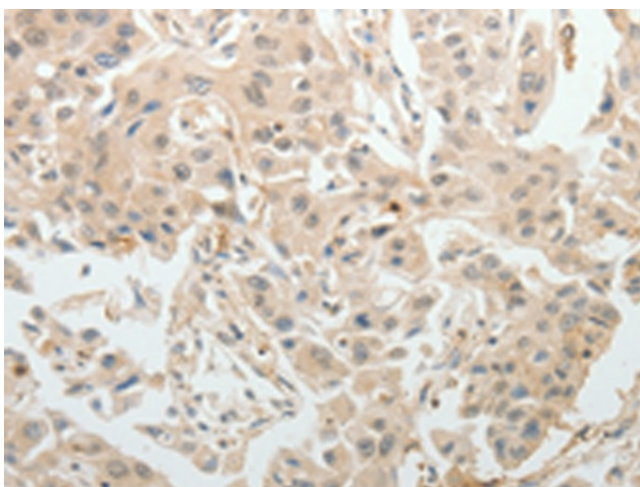
Product data:

| | |
|-----------------------|---|
| Product Type: | Primary Antibodies |
| Applications: | IHC |
| Recommended Dilution: | IHC: 15-50 Positive control: Human ovarian cancer Predicted cell location: Cytoplasm |
| Reactivity: | Human, Mouse, Rat |
| Host: | Rabbit |
| Isotype: | IgG |
| Clonality: | Polyclonal |
| Immunogen: | Synthetic peptide corresponding to a region derived from 1308-1321 amino acids of human ATP-binding cassette, sub-family B (MDR/TAP), member 11 |
| Formulation: | PBS pH7.3, 0.05% NaN ₃ , 50% glycerol |
| Concentration: | lot specific |
| Purification: | Antigen affinity purification |
| Conjugation: | Unconjugated |
| Storage: | Store at -20°C as received. |
| Stability: | Stable for 12 months from date of receipt. |
| Gene Name: | ATP binding cassette subfamily B member 11 |
| Database Link: | NP_003733 Entrez Gene 27413 Mouse Entrez Gene 83569 Rat Entrez Gene 8647 Human O95342 |

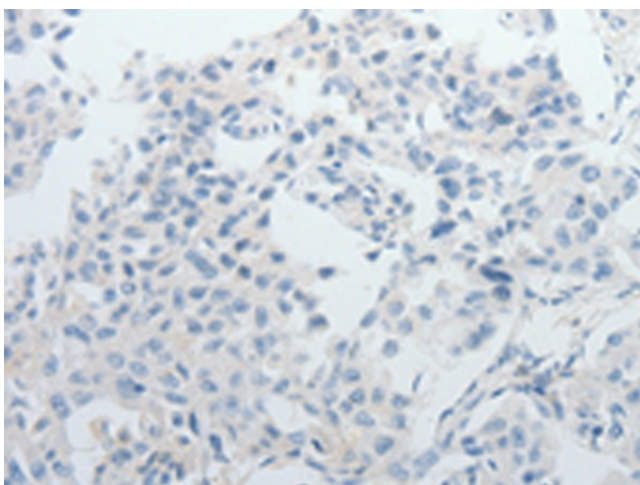


[View online »](#)

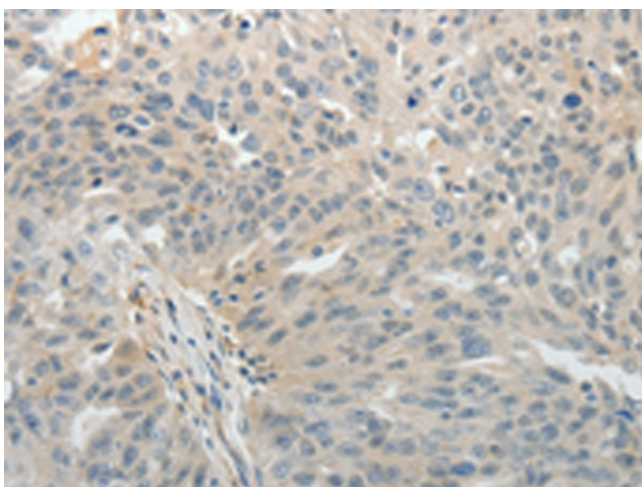
| | |
|--------------------------|---|
| Background: | The membrane-associated protein encoded by this gene is a member of the superfamily of ATP-binding cassette (ABC) transporters. ABC proteins transport various molecules across extra- and intra-cellular membranes. ABC genes are divided into seven distinct subfamilies (ABC1; MDR/TAP; MRP; ALD; OABP; GCN20; White). This protein is a member of the MDR/TAP subfamily. Members of the MDR/TAP subfamily are involved in multidrug resistance. The protein encoded by this gene is the major canalicular bile salt export pump in man. Mutations in this gene cause a form of progressive familial intrahepatic cholestases which are a group of inherited disorders with severe cholestatic liver disease from early infancy. |
| Synonyms: | ABC16; BRIC2; BSEP; PFIC-2; PFIC2; PGY4; SPGP |
| Protein Families: | Druggable Genome, Transmembrane |
| Protein Pathways: | ABC transporters |

Product images:

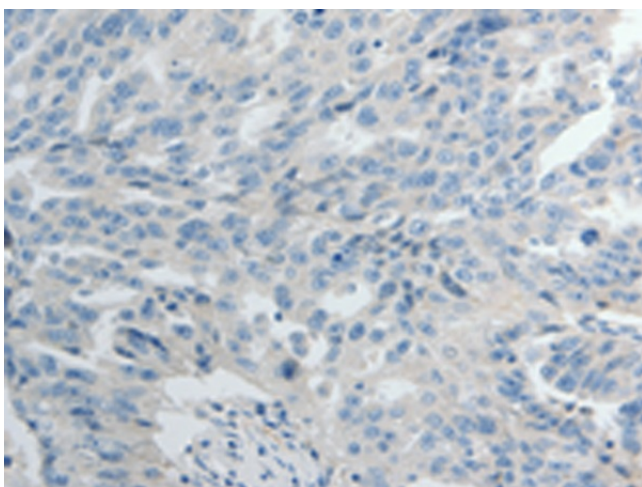
Immunohistochemistry of paraffin-embedded Human ovarian cancer tissue using TA322827 (ABCB11 Antibody) at dilution 1/15 (Original magnification: $\times 200$)



Immunohistochemistry of paraffin-embedded Human ovarian cancer tissue using TA322827 (ABCB11 Antibody) at dilution 1/15, treated with synthetic peptide. (Original magnification: $\times 200$)



Immunohistochemistry of paraffin-embedded Human lung cancer tissue using TA322827 (ABCB11 Antibody) at dilution 1/15 (Original magnification: ×200)



Immunohistochemistry of paraffin-embedded Human lung cancer tissue using TA322827 (ABCB11 Antibody) at dilution 1/15, treated with synthetic peptide. (Original magnification: ×200)