

Product datasheet for **TA322826**

ABCB11 Rabbit Polyclonal Antibody

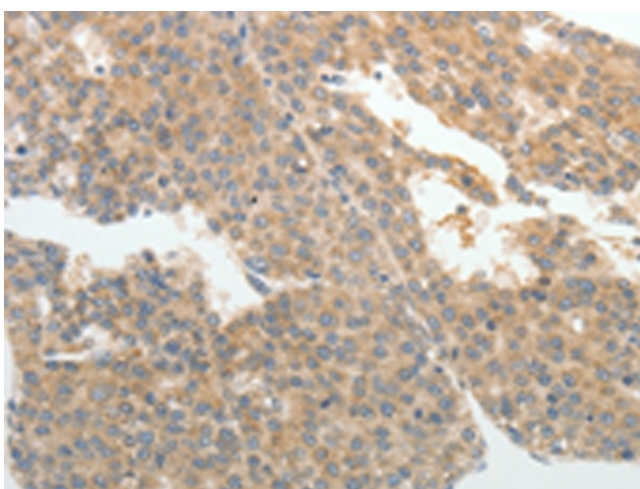
Product data:

Product Type:	Primary Antibodies
Applications:	IHC
Recommended Dilution:	IHC: 25-100 Positive control: Human liver cancer Predicted cell location: Cytoplasm
Reactivity:	Human, Mouse, Rat
Host:	Rabbit
Isotype:	IgG
Clonality:	Polyclonal
Immunogen:	Synthetic peptide corresponding to a region derived from 1308-1321 amino acids of human ATP-binding cassette, sub-family B (MDR/TAP), member 11
Formulation:	PBS pH7.3, 0.05% NaN ₃ , 50% glycerol
Concentration:	lot specific
Purification:	Antigen affinity purification
Conjugation:	Unconjugated
Storage:	Store at -20°C as received.
Stability:	Stable for 12 months from date of receipt.
Gene Name:	ATP binding cassette subfamily B member 11
Database Link:	NP_003733 Entrez Gene 27413 Mouse Entrez Gene 83569 Rat Entrez Gene 8647 Human O95342

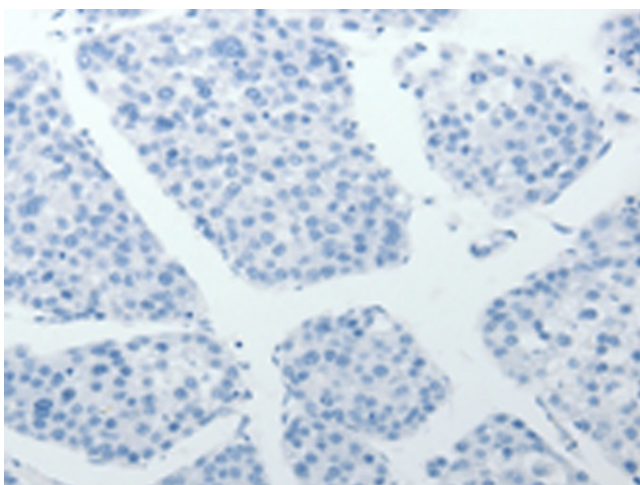


[View online »](#)

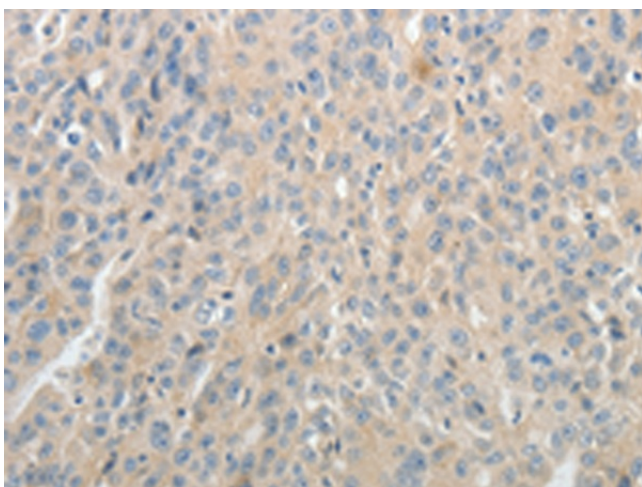
Background:	The membrane-associated protein encoded by this gene is a member of the superfamily of ATP-binding cassette (ABC) transporters. ABC proteins transport various molecules across extra- and intra-cellular membranes. ABC genes are divided into seven distinct subfamilies (ABC1; MDR/TAP; MRP; ALD; OABP; GCN20; White). This protein is a member of the MDR/TAP subfamily. Members of the MDR/TAP subfamily are involved in multidrug resistance. The protein encoded by this gene is the major canalicular bile salt export pump in man. Mutations in this gene cause a form of progressive familial intrahepatic cholestases which are a group of inherited disorders with severe cholestatic liver disease from early infancy.
Synonyms:	ABC16; BRIC2; BSEP; PFIC-2; PFIC2; PGY4; SPGP
Protein Families:	Druggable Genome, Transmembrane
Protein Pathways:	ABC transporters

Product images:

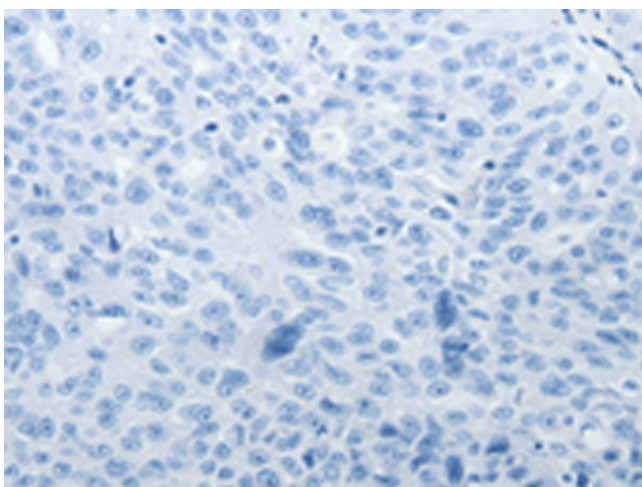
Immunohistochemistry of paraffin-embedded Human liver cancer tissue using TA322826 (ABCB11 Antibody) at dilution 1/25 (Original magnification: $\times 200$)



Immunohistochemistry of paraffin-embedded Human liver cancer tissue using TA322826 (ABCB11 Antibody) at dilution 1/25, treated with synthetic peptide. (Original magnification: $\times 200$)



Immunohistochemistry of paraffin-embedded Human ovarian cancer tissue using TA322826 (ABCB11 Antibody) at dilution 1/25 (Original magnification: $\times 200$)



Immunohistochemistry of paraffin-embedded Human ovarian cancer tissue using TA322826 (ABCB11 Antibody) at dilution 1/25, treated with synthetic peptide. (Original magnification: $\times 200$)