

## Product datasheet for **TA322825S**

### MRP3 (ABCC3) Rabbit Polyclonal Antibody

#### Product data:

Product Type:	Primary Antibodies
Applications:	IHC
Recommended Dilution:	IHC: 15-50 Positive control: Human breast cancer Predicted cell location: Cytoplasm
Reactivity:	Human, Mouse
Host:	Rabbit
Isotype:	IgG
Clonality:	Polyclonal
Immunogen:	Synthetic peptide corresponding to a region derived from 881-894 amino acids of human ATP-binding cassette, sub-family C (CFTR/MRP), member 3
Formulation:	PBS pH7.3, 0.05% NaN <sub>3</sub> , 50% glycerol
Purification:	Antigen affinity purification
Conjugation:	Unconjugated
Storage:	Store at -20°C as received.
Stability:	Stable for 12 months from date of receipt.
Gene Name:	ATP binding cassette subfamily C member 3
Database Link:	<a href="#">NP_064422</a> <a href="#">Entrez Gene 76408 Mouse</a> <a href="#">Entrez Gene 8714 Human</a> <a href="#">O15438</a>
Background:	The protein encoded by this gene is a member of the superfamily of ATP-binding cassette (ABC) transporters. ABC proteins transport various molecules across extra- and intra-cellular membranes. ABC genes are divided into seven distinct subfamilies (ABC1; MDR/TAP; MRP; ALD; OABP; GCN20; White). This protein is a member of the MRP subfamily which is involved in multi-drug resistance. The specific function of this protein has not yet been determined; however; this protein may play a role in the transport of biliary and intestinal excretion of organic anions. Alternatively spliced variants which encode different protein isoforms have been described; however; not all variants have been fully characterized. [



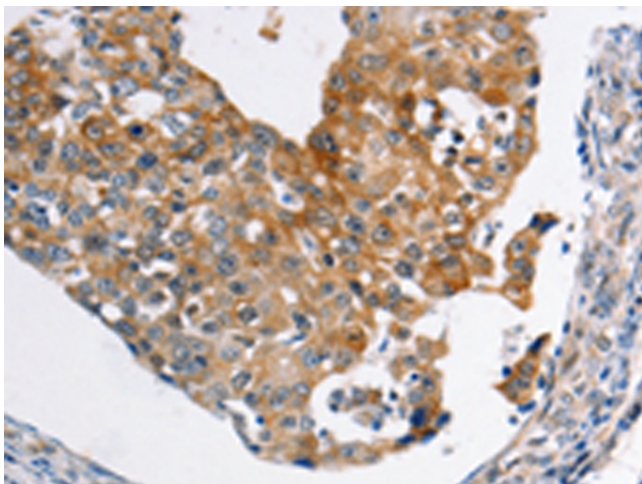
[View online »](#)

**Synonyms:** ABC31; cMOAT2; EST90757; MLP2; MOAT-D; MRP3

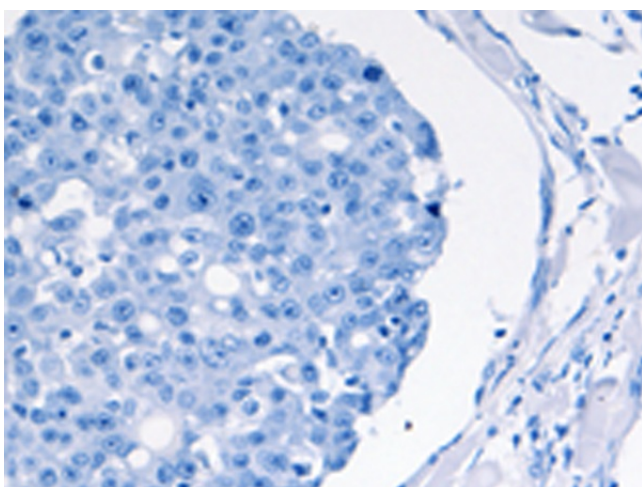
**Protein Families:** Druggable Genome, Transmembrane

**Protein Pathways:** ABC transporters

**Product images:**



Immunohistochemistry of paraffin-embedded Human breast cancer tissue using [TA322825] (ABCC3 Antibody) at dilution 1/20 (Original magnification:  $\times 200$ )



Immunohistochemistry of paraffin-embedded Human breast cancer tissue using [TA322825] (ABCC3 Antibody) at dilution 1/20, treated with synthetic peptide. (Original magnification:  $\times 200$ )