

## Product datasheet for **TA322822S**

### ADAM20 Rabbit Polyclonal Antibody

#### Product data:

Product Type:	Primary Antibodies
Applications:	IHC, WB
Recommended Dilution:	WB: 100-500 WB positive control: PC3 and hela cells IHC: 25-100 Positive control: Human brain Predicted cell location: Cytoplasm
Reactivity:	Human
Host:	Rabbit
Isotype:	IgG
Clonality:	Polyclonal
Immunogen:	Fusion protein corresponding to a region derived from 211-400 amino acids of human ADAM metallopeptidase domain 20
Formulation:	PBS pH7.3, 0.05% NaN <sub>3</sub> , 50% glycerol
Purification:	Antigen affinity purification
Conjugation:	Unconjugated
Storage:	Store at -20°C as received.
Stability:	Stable for 12 months from date of receipt.
Predicted Protein Size:	82 kDa
Gene Name:	ADAM metallopeptidase domain 20
Database Link:	<a href="#">NP_003805</a> <a href="#">Entrez Gene 8748 Human</a> <a href="#">O43506</a>
Background:	This gene encodes a member of the ADAM (a disintegrin and metalloprotease domain) family. Members of this family are membrane-anchored proteins structurally related to snake venom disintegrins, and have been implicated in a variety of biological processes involving cell-cell and cell-matrix interactions, including fertilization, muscle development, and neurogenesis. The expression of this gene is testis-specific.

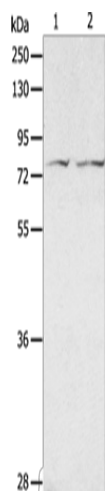


[View online »](#)

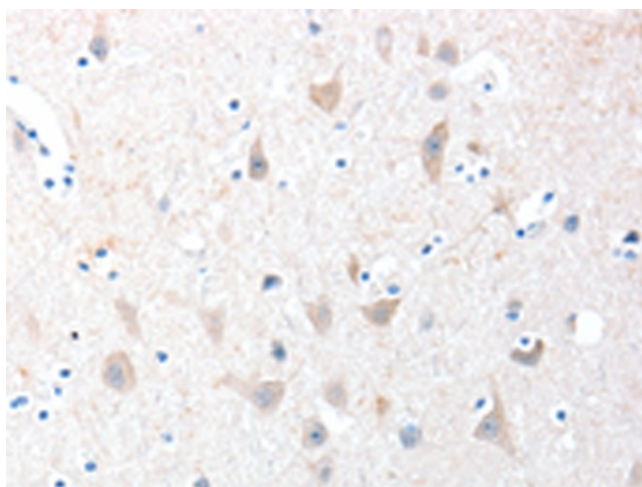
**Synonyms:** ADAM metallopeptidase domain 20; a disintegrin and metalloproteinase domain 20

**Protein Families:** Druggable Genome, Protease, Transmembrane

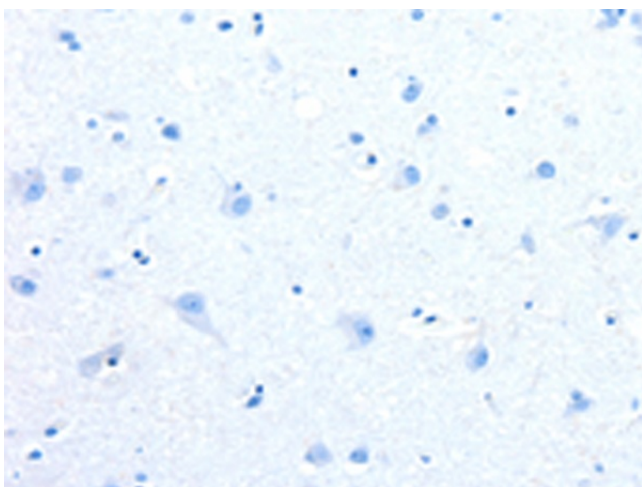
**Product images:**



Gel: 8%SDS-PAGE  
Lysate: 40 µg  
Lane 1-2: PC3 cells  
hela cells  
Primary antibody: [TA322822] (ADAM20  
Antibody) at dilution 1/100  
Secondary antibody: Goat anti rabbit IgG at  
1/8000 dilution  
Exposure time: 10 seconds



Immunohistochemistry of paraffin-embedded  
Human brain tissue using [TA322822] (ADAM20  
Antibody) at dilution 1/30 (Original magnification:  
×200)



Immunohistochemistry of paraffin-embedded Human brain tissue using [TA322822] (ADAM20 Antibody) at dilution 1/30, treated with fusion protein. (Original magnification: x200)