

Product datasheet for **TA322822**

ADAM20 Rabbit Polyclonal Antibody

Product data:

| | |
|-------------------------|--|
| Product Type: | Primary Antibodies |
| Applications: | IHC, WB |
| Recommended Dilution: | WB: 100-500 WB positive control: PC3 and hela cells IHC: 25-100 Positive control: Human brain Predicted cell location: Cytoplasm |
| Reactivity: | Human |
| Host: | Rabbit |
| Isotype: | IgG |
| Clonality: | Polyclonal |
| Immunogen: | Fusion protein corresponding to a region derived from 211-400 amino acids of human ADAM metallopeptidase domain 20 |
| Formulation: | PBS pH7.3, 0.05% NaN ₃ , 50% glycerol |
| Concentration: | lot specific |
| Purification: | Antigen affinity purification |
| Conjugation: | Unconjugated |
| Storage: | Store at -20°C as received. |
| Stability: | Stable for 12 months from date of receipt. |
| Predicted Protein Size: | 82 kDa |
| Gene Name: | ADAM metallopeptidase domain 20 |
| Database Link: | NP_003805 Entrez Gene 8748 Human O43506 |



[View online »](#)

Background:

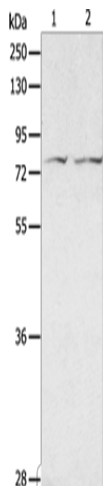
This gene encodes a member of the ADAM (a disintegrin and metalloprotease domain) family. Members of this family are membrane-anchored proteins structurally related to snake venom disintegrins, and have been implicated in a variety of biological processes involving cell-cell and cell-matrix interactions, including fertilization, muscle development, and neurogenesis. The expression of this gene is testis-specific.

Synonyms:

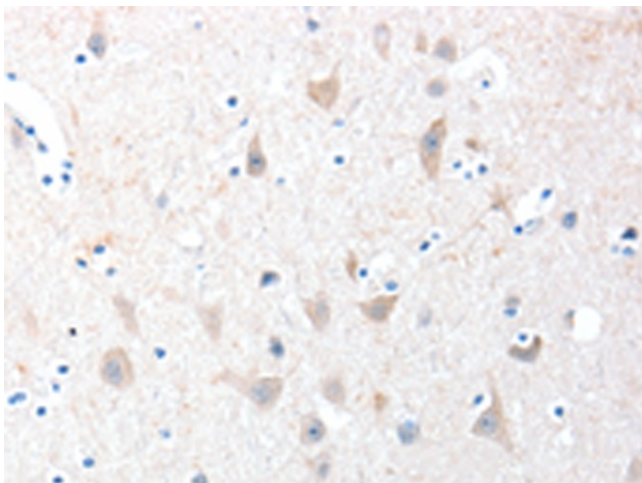
ADAM metalloproteinase domain 20; a disintegrin and metalloproteinase domain 20

Protein Families:

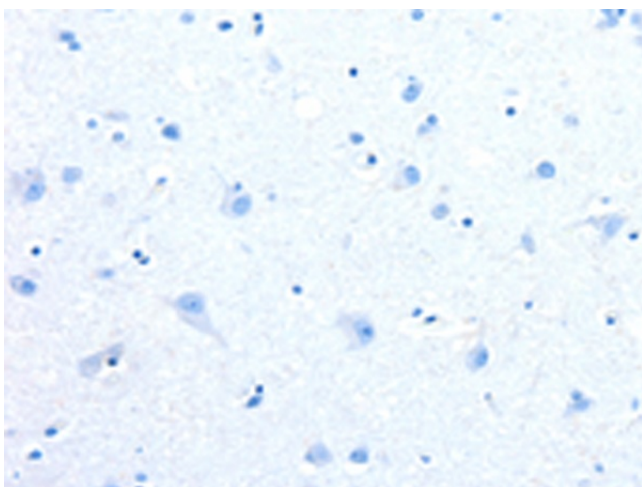
Druggable Genome, Protease, Transmembrane

Product images:


Gel: 8%SDS-PAGE
 Lysate: 40 µg
 Lane 1-2: PC3 cells
 hela cells
 Primary antibody: TA322822 (ADAM20 Antibody)
 at dilution 1/100
 Secondary antibody: Goat anti rabbit IgG at
 1/8000 dilution
 Exposure time: 10 seconds



Immunohistochemistry of paraffin-embedded
 Human brain tissue using TA322822 (ADAM20
 Antibody) at dilution 1/30 (Original magnification:
 ×200)



Immunohistochemistry of paraffin-embedded Human brain tissue using TA322822 (ADAM20 Antibody) at dilution 1/30, treated with fusion protein. (Original magnification: x200)