

## Product datasheet for **TA322817S**

### IL18R1 Rabbit Polyclonal Antibody

#### Product data:

Product Type:	Primary Antibodies
Applications:	WB
Recommended Dilution:	WB: 200-1000 WB positive control: Human thyroid cancer tissue
Reactivity:	Human, Mouse
Host:	Rabbit
Isotype:	IgG
Clonality:	Polyclonal
Immunogen:	Fusion protein corresponding to a region derived from 351-541 amino acids of human interleukin 18 receptor 1
Formulation:	PBS pH7.3, 0.05% NaN <sub>3</sub> , 50% glycerol
Concentration:	lot specific
Purification:	Antigen affinity purification
Conjugation:	Unconjugated
Storage:	Store at -20°C as received.
Stability:	Stable for 12 months from date of receipt.
Predicted Protein Size:	62 kDa
Gene Name:	interleukin 18 receptor 1
Database Link:	<a href="#">NP_003846</a> <a href="#">Entrez Gene 16182 Mouse</a> <a href="#">Entrez Gene 8809 Human</a> <a href="#">Q13478</a>
Background:	The protein encoded by this gene is a cytokine receptor that belongs to the interleukin 1 receptor family. This receptor specifically binds interleukin 18 (IL18); and is essential for IL18 mediated signal transduction. IFN-alpha and IL12 are reported to induce the expression of this receptor in NK and T cells. This gene along with four other members of the interleukin 1 receptor family; including IL1R2; IL1R1; ILRL2 (IL-1Rrp2); and IL1RL1 (T1/ST2); form a gene cluster on chromosome 2q.
Synonyms:	CD218a; CDw218a; IL-1Rrp; IL1RRP; IL18RA

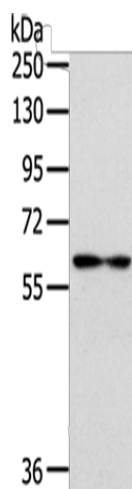


[View online »](#)

Protein Families: Druggable Genome, Transmembrane

Protein Pathways: Cytokine-cytokine receptor interaction

### Product images:



Gel: 8%SDS-PAGE  
Lysate: 40  $\mu$ g  
Lane: Human thyroid cancer tissue  
Primary antibody: [TA322817] (IL18R1 Antibody)  
at dilution 1/222  
Secondary antibody: Goat anti rabbit IgG at  
1/8000 dilution  
Exposure time: 2 minutes