

## Product datasheet for **TA322816**

### IL18R1 Rabbit Polyclonal Antibody

#### Product data:

|                         |                                                                                                                                                                                                                                                                                                                                                                                                                                                                                                            |
|-------------------------|------------------------------------------------------------------------------------------------------------------------------------------------------------------------------------------------------------------------------------------------------------------------------------------------------------------------------------------------------------------------------------------------------------------------------------------------------------------------------------------------------------|
| Product Type:           | Primary Antibodies                                                                                                                                                                                                                                                                                                                                                                                                                                                                                         |
| Applications:           | WB                                                                                                                                                                                                                                                                                                                                                                                                                                                                                                         |
| Recommended Dilution:   | WB: 500-2000<br>WB positive control: A549 cells                                                                                                                                                                                                                                                                                                                                                                                                                                                            |
| Reactivity:             | Human, Mouse                                                                                                                                                                                                                                                                                                                                                                                                                                                                                               |
| Host:                   | Rabbit                                                                                                                                                                                                                                                                                                                                                                                                                                                                                                     |
| Isotype:                | IgG                                                                                                                                                                                                                                                                                                                                                                                                                                                                                                        |
| Clonality:              | Polyclonal                                                                                                                                                                                                                                                                                                                                                                                                                                                                                                 |
| Immunogen:              | Fusion protein corresponding to a region derived from 351-541 amino acids of human interleukin 18 receptor 1                                                                                                                                                                                                                                                                                                                                                                                               |
| Formulation:            | PBS pH7.3, 0.05% NaN <sub>3</sub> , 50% glycerol                                                                                                                                                                                                                                                                                                                                                                                                                                                           |
| Concentration:          | lot specific                                                                                                                                                                                                                                                                                                                                                                                                                                                                                               |
| Purification:           | Antigen affinity purification                                                                                                                                                                                                                                                                                                                                                                                                                                                                              |
| Conjugation:            | Unconjugated                                                                                                                                                                                                                                                                                                                                                                                                                                                                                               |
| Storage:                | Store at -20°C as received.                                                                                                                                                                                                                                                                                                                                                                                                                                                                                |
| Stability:              | Stable for 12 months from date of receipt.                                                                                                                                                                                                                                                                                                                                                                                                                                                                 |
| Predicted Protein Size: | 62 kDa                                                                                                                                                                                                                                                                                                                                                                                                                                                                                                     |
| Gene Name:              | interleukin 18 receptor 1                                                                                                                                                                                                                                                                                                                                                                                                                                                                                  |
| Database Link:          | <a href="#">NP_003846</a><br><a href="#">Entrez Gene 16182 Mouse</a> <a href="#">Entrez Gene 8809 Human</a><br><a href="#">Q13478</a>                                                                                                                                                                                                                                                                                                                                                                      |
| Background:             | The protein encoded by this gene is a cytokine receptor that belongs to the interleukin 1 receptor family. This receptor specifically binds interleukin 18 (IL18); and is essential for IL18 mediated signal transduction. IFN-alpha and IL12 are reported to induce the expression of this receptor in NK and T cells. This gene along with four other members of the interleukin 1 receptor family; including IL1R2; IL1R1; ILRL2 (IL-1Rrp2); and IL1RL1 (T1/ST2); form a gene cluster on chromosome 2q. |
| Synonyms:               | CD218a; CDw218a; IL-1Rrp; IL1RRP; IL18RA                                                                                                                                                                                                                                                                                                                                                                                                                                                                   |

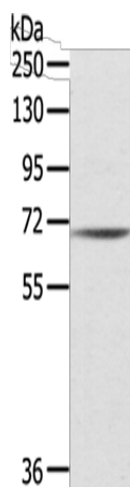


[View online »](#)

Protein Families: Druggable Genome, Transmembrane

Protein Pathways: Cytokine-cytokine receptor interaction

### Product images:



Gel: 8%SDS-PAGE

Lysate: 40  $\mu$ g

Lane: A549 cells

Primary antibody: TA322816 (IL18R1 Antibody) at dilution 1/200

Secondary antibody: Goat anti rabbit IgG at 1/8000 dilution

Exposure time: 1 minute