

Product datasheet for **TA322815**

IL18R1 Rabbit Polyclonal Antibody

Product data:

Product Type:	Primary Antibodies
Applications:	IHC, WB
Recommended Dilution:	WB: 500-2000 WB positive control: HL60 cell lysate IHC: 50-200 Positive control: Human tonsil Predicted cell location: Cytoplasm
Reactivity:	Human
Host:	Rabbit
Isotype:	IgG
Clonality:	Polyclonal
Immunogen:	Fusion protein corresponding to a region derived from 25-330 amino acids of human interleukin 18 receptor 1
Formulation:	PBS pH7.3, 0.05% NaN ₃ , 50% glycerol
Concentration:	lot specific
Purification:	Antigen affinity purification
Conjugation:	Unconjugated
Storage:	Store at -20°C as received.
Stability:	Stable for 12 months from date of receipt.
Predicted Protein Size:	62 kDa
Gene Name:	interleukin 18 receptor 1
Database Link:	NP_003846 Entrez Gene 8809 Human Q13478



[View online »](#)

Background:

The protein encoded by this gene is a cytokine receptor that belongs to the interleukin 1 receptor family. This receptor specifically binds interleukin 18 (IL18); and is essential for IL18 mediated signal transduction. IFN-alpha and IL12 are reported to induce the expression of this receptor in NK and T cells. This gene along with four other members of the interleukin 1 receptor family; including IL1R2; IL1R1; ILRL2 (IL-1Rrp2); and IL1RL1 (T1/ST2); form a gene cluster on chromosome 2q.

Synonyms:

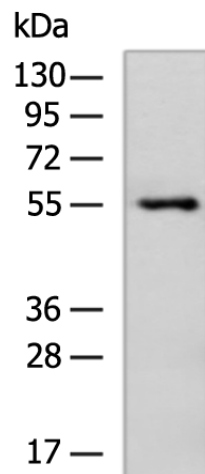
CD218a; CDw218a; IL-1Rrp; IL1RRP; IL18RA

Protein Families:

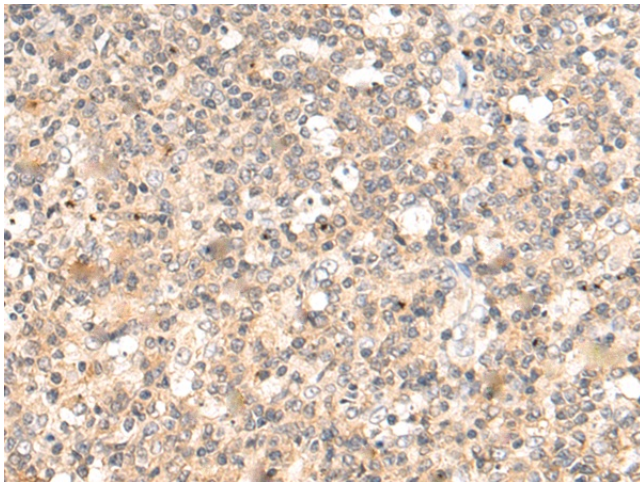
Druggable Genome, Transmembrane

Protein Pathways:

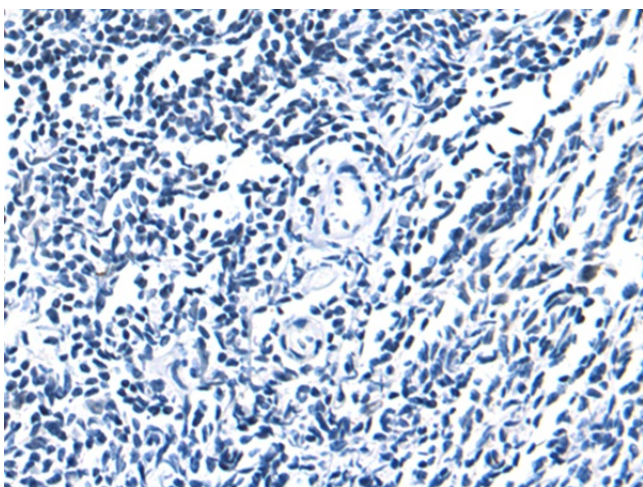
Cytokine-cytokine receptor interaction

Product images:

Gel: 8%SDS-PAGE
Lysate: 40 μ g
Lane: HL60 cell lysate
Primary antibody: TA322815 (IL18R1 Antibody) at dilution 1/550
Secondary antibody: Goat anti rabbit IgG at 1/5000 dilution
Exposure time: 1 minute



Immunohistochemistry of paraffin-embedded Human tonsil tissue using TA322815 (IL18R1 Antibody) at dilution 1/50 (Original magnification: \times 200)



Immunohistochemistry of paraffin-embedded Human tonsil tissue using TA322815 (IL18R1 Antibody) at dilution 1/50, treated with fusion protein. (Original magnification: x200)