

Product datasheet for **TA322814S**

IL18R Beta (IL18RAP) Rabbit Polyclonal Antibody

Product data:

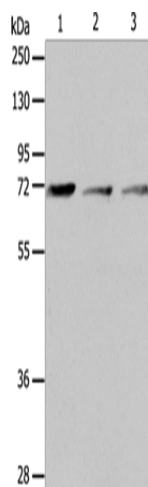
Product Type:	Primary Antibodies
Applications:	WB
Recommended Dilution:	WB: 500-2000 WB positive control: RAW264.7 cells and human liver cancer tissue, SP20 cells
Reactivity:	Human, Mouse
Host:	Rabbit
Isotype:	IgG
Clonality:	Polyclonal
Immunogen:	Fusion protein corresponding to a region derived from 378-599 amino acids of human interleukin 18 receptor accessory protein
Formulation:	PBS pH7.3, 0.05% NaN ₃ , 50% glycerol
Purification:	Antigen affinity purification
Conjugation:	Unconjugated
Storage:	Store at -20°C as received.
Stability:	Stable for 12 months from date of receipt.
Predicted Protein Size:	68 kDa
Gene Name:	interleukin 18 receptor accessory protein
Database Link:	NP_003844 Entrez Gene 16174 Mouse Entrez Gene 8807 Human O95256
Background:	Interleukin 18 receptor accessory protein; also known as IL18RAP and CDw218b (cluster of differentiation w218b); is a human gene. The protein encoded by this gene is an accessory subunit of the heterodimeric receptor for IL18. This protein enhances the IL18 binding activity of IL18R1 (IL1RRP); a ligand binding subunit of IL18 receptor. The coexpression of IL18R1 and this protein is required for the activation of NF- κ B and MAPK8 (JNK) in response to IL18.
Synonyms:	ACPL; CD218b; CDw218b; IL-1R-7; IL-1R7; IL-1RACPL; IL-18R-beta; IL-18RAcP; IL-18Rbeta; IL18RB
Protein Families:	Druggable Genome, Transmembrane



[View online »](#)

Protein Pathways: Cytokine-cytokine receptor interaction

Product images:



Gel: 10%SDS-PAGE

Lysate: 40 µg

Lane 1-3: RAW264.7 cells

human liver cancer tissue

SP20 cell

Primary antibody: [TA322814] (IL18RAP Antibody)
at dilution 1/650

Secondary antibody: Goat anti rabbit IgG at
1/8000 dilution

Exposure time: 1 minute