

## Product datasheet for **TA322809**

### Endothelin B Receptor (EDNRB) Rabbit Polyclonal Antibody

#### Product data:

Product Type:	Primary Antibodies
Applications:	IHC, WB
Recommended Dilution:	WB: 200-1000 WB positive control: Rat brain tissue lysate IHC: 50-200 Positive control: Human colorectal cancer Predicted cell location: Cytoplasm
Reactivity:	Human, Rat
Host:	Rabbit
Isotype:	IgG
Clonality:	Polyclonal
Immunogen:	Synthetic peptide peptide corresponding to a region derived from 70-84 amino acids of human endothelin receptor type B
Formulation:	PBS pH7.3, 0.05% NaN <sub>3</sub> , 50% glycerol
Concentration:	lot specific
Purification:	Antigen affinity purification
Conjugation:	Unconjugated
Storage:	Store at -20°C as received.
Stability:	Stable for 12 months from date of receipt.
Predicted Protein Size:	50 kDa
Gene Name:	endothelin receptor type B
Database Link:	<a href="#">NP_003982</a> <a href="#">Entrez Gene 50672 Rat</a> <a href="#">Entrez Gene 1910 Human</a> <a href="#">P24530</a>



[View online »](#)

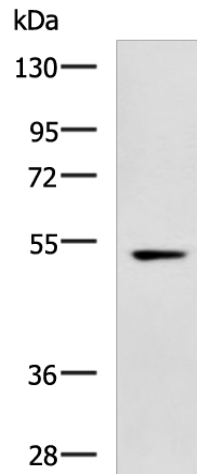
**Background:** The protein encoded by this gene is a G protein-coupled receptor which activates a phosphatidylinositol-calcium second messenger system. Its ligand; endothelin; consists of a family of three potent vasoactive peptides: ET1; ET2; and ET3. Studies suggest that the multigenic disorder; Hirschsprung disease type 2; is due to mutations in the endothelin receptor type B gene. Alternatively spliced transcript variants encoding different isoforms have been found for this gene.

**Synonyms:** ABCDS; ET-B; ET-BR; ETB; ETBR; ETRB; HSCR; HSCR2; WS4A

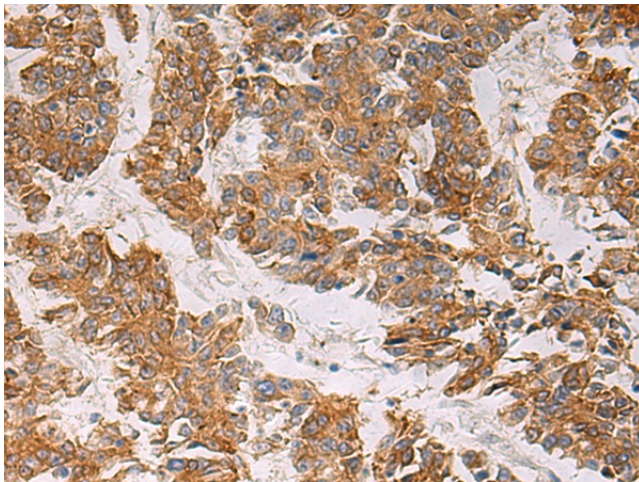
**Protein Families:** Druggable Genome, GPCR, Transmembrane

**Protein Pathways:** Calcium signaling pathway, Melanogenesis, Neuroactive ligand-receptor interaction

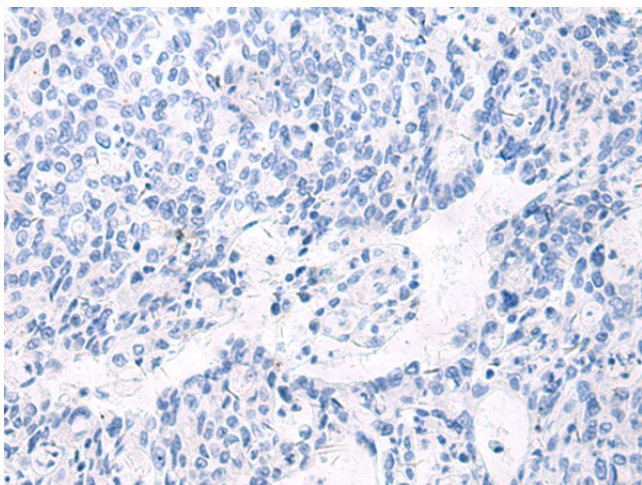
**Product images:**



Gel: 8%SDS-PAGE  
 Lysate: 40 µg  
 Lane: Rat brain tissue lysate  
 Primary antibody: TA322809 (EDNRB Antibody) at dilution 1/400  
 Secondary antibody: Goat anti rabbit IgG at 1/5000 dilution  
 Exposure time: 1 minute



Immunohistochemistry of paraffin-embedded Human colorectal cancer tissue using TA322809 (EDNRB Antibody) at dilution 1/25 (Original magnification: ×200)



Immunohistochemistry of paraffin-embedded Human colorectal cancer tissue using TA322809 (EDNRB Antibody) at dilution 1/25, treated with synthetic peptide. (Original magnification: ×200)