

## Product datasheet for **TA322808**

### **RHOB Rabbit Polyclonal Antibody**

#### **Product data:**

Product Type:	Primary Antibodies
Applications:	WB
Recommended Dilution:	WB: 1000-2000 WB positive control: Mouse brain and fetal brain tissue
Reactivity:	Human, Mouse, Rat
Host:	Rabbit
Isotype:	IgG
Clonality:	Polyclonal
Immunogen:	Synthetic peptide corresponding to a region derived from 179-188 amino acids of Human Ras homolog family member B
Formulation:	PBS pH7.3, 0.05% NaN <sub>3</sub> , 50% glycerol
Concentration:	lot specific
Purification:	Antigen affinity purification
Conjugation:	Unconjugated
Storage:	Store at -20°C as received.
Stability:	Stable for 12 months from date of receipt.
Predicted Protein Size:	22 kDa
Gene Name:	ras homolog family member B
Database Link:	<a href="#">NP_004031</a> <a href="#">Entrez Gene 11852 Mouse</a> <a href="#">Entrez Gene 64373 Rat</a> <a href="#">Entrez Gene 388 Human</a> <a href="#">P62745</a>



[View online »](#)

**Background:**

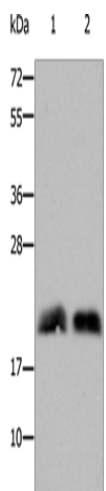
Ras homolog gene family; member B; also known as RHOB; is a protein which in humans is encoded by the RHOB gene. RHOB is a member of the Rho GTP-binding protein family. Mediates apoptosis in neoplastically transformed cells after DNA damage. It is not necessary for development but affects cell adhesion and growth factor signaling in transformed cells. It plays a negative role in tumorigenesis as deletion causes tumor formation. It involved in intracellular protein trafficking of a number of proteins; and serves as a microtubule-dependent signal that is required for the myosin contractile ring formation during cell cycle cytokinesis. Required for genotoxic stress-induced cell death in breast cancer cells.

**Synonyms:**

ARH6; ARHB; MST081; MSTP081; RHOH6

**Protein Families:**

Druggable Genome

**Product images:**

Gel: 10%SDS-PAGE

Lysate: 40 µg

Lane 1-2: Mouse brain tissue

Mouse fetal brain tissue

Primary antibody: TA322808 (RHOB Antibody) at dilution 1/800

Secondary antibody: Goat anti rabbit IgG at 1/8000 dilution

Exposure time: 15 seconds