

Product datasheet for **TA322803**

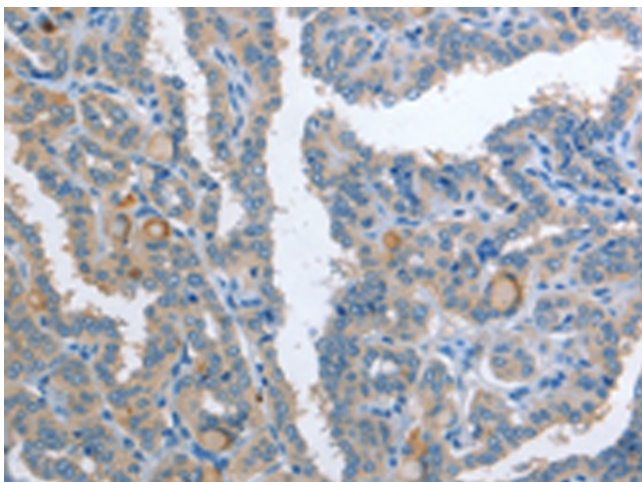
AP2S1 Rabbit Polyclonal Antibody

Product data:

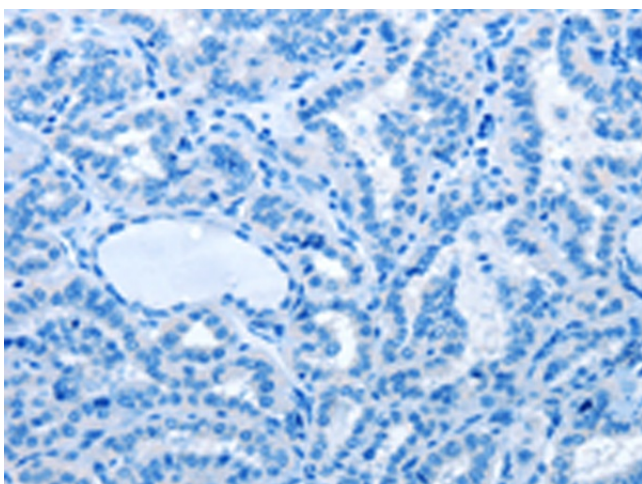
Product Type:	Primary Antibodies
Applications:	IHC
Recommended Dilution:	IHC: 25-100 Positive control: Human thyroid cancer Predicted cell location: Cytoplasm
Reactivity:	Human, Mouse, Rat
Host:	Rabbit
Isotype:	IgG
Clonality:	Polyclonal
Immunogen:	Full length fusion protein
Formulation:	PBS pH7.3, 0.05% NaN ₃ , 50% glycerol
Concentration:	lot specific
Purification:	Antigen affinity purification
Conjugation:	Unconjugated
Storage:	Store at -20°C as received.
Stability:	Stable for 12 months from date of receipt.
Gene Name:	adaptor related protein complex 2 sigma 1 subunit
Database Link:	NP_004060 Entrez Gene 65046 Rat Entrez Gene 232910 Mouse Entrez Gene 1175 Human P53680
Background:	One of two major clathrin-associated adaptor complexes, AP-2, is a heterotetramer which is associated with the plasma membrane. This complex is composed of two large chains, a medium chain, and a small chain. This gene encodes the small chain of this complex. Alternative splicing has been observed in this gene and results in two known transcripts.
Synonyms:	AP17; CLAPS2; FBH3; FBHOk; HHC3
Protein Pathways:	Endocytosis, Huntington's disease



[View online »](#)

Product images:

Immunohistochemistry of paraffin-embedded Human thyroid cancer tissue using TA322803 (AP2S1 Antibody) at dilution 1/25 (Original magnification: $\times 200$)



Immunohistochemistry of paraffin-embedded Human thyroid cancer tissue using TA322803 (AP2S1 Antibody) at dilution 1/25, treated with fusion protein. (Original magnification: $\times 200$)