

## Product datasheet for **TA322801S**

### alpha Defensin 1 (DEFA1) Rabbit Polyclonal Antibody

#### Product data:

Product Type:	Primary Antibodies
Applications:	IHC, WB
Recommended Dilution:	WB: 500-1000 WB positive control: Human lung tissue IHC: 25-50 Positive control: Human esophagus cancer Predicted cell location: Cytoplasm
Reactivity:	Human
Host:	Rabbit
Isotype:	IgG
Clonality:	Polyclonal
Immunogen:	Synthetic peptide corresponding to a region derived from 49-63 amino acids of Human Defensin, alpha 1
Formulation:	PBS pH7.3, 0.05% NaN <sub>3</sub> , 50% glycerol
Purification:	Antigen affinity purification
Conjugation:	Unconjugated
Storage:	Store at -20°C as received.
Stability:	Stable for 12 months from date of receipt.
Predicted Protein Size:	10 kDa
Gene Name:	defensin alpha 1
Database Link:	<a href="#">NP_004075</a> <a href="#">Entrez Gene 1667 Human</a> <a href="#">P59665</a>



[View online »](#)

**Background:**

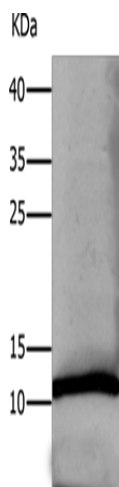
Defensins are a family of microbicidal and cytotoxic peptides thought to be involved in host defense. They are abundant in the granules of neutrophils and also found in the epithelia of mucosal surfaces such as those of the intestine; respiratory tract; urinary tract; and vagina. Members of the defensin family are highly similar in protein sequence and distinguished by a conserved cysteine motif. The protein encoded by this gene; defensin; alpha 1; is found in the microbicidal granules of neutrophils and likely plays a role in phagocyte-mediated host defense. Several alpha defensin genes are clustered on chromosome 8. This gene differs from defensin; alpha 3 by only one amino acid. This gene and the gene encoding defensin; alpha 3 are both subject to copy number variation.

**Synonyms:**

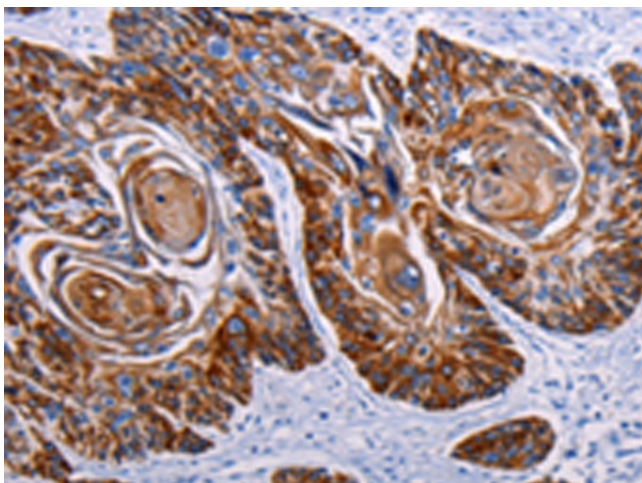
DEF1; DEFA2; HNP-1; HP-1; HP1; MRS

**Protein Families:**

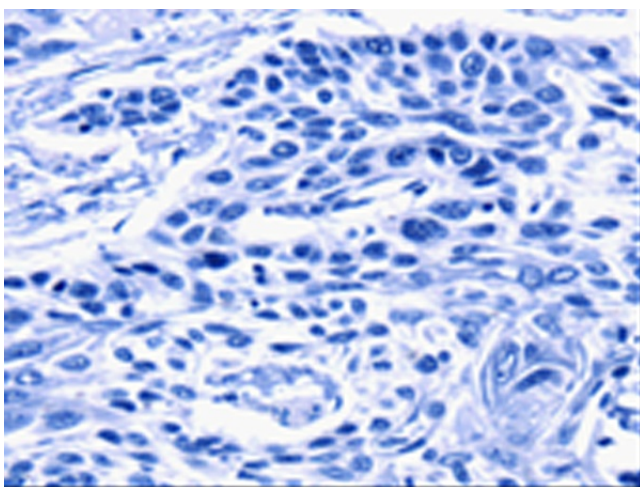
Druggable Genome, Secreted Protein

**Product images:**

Gel: 12%SDS-PAGE  
Lysate: 30 µg  
Lane: Human lung tissue  
Primary antibody: [TA322801] (DEFA1 Antibody) at dilution 1/550  
Secondary antibody: Goat anti rabbit IgG at 1/8000 dilution  
Exposure time: 20 seconds



Immunohistochemistry of paraffin-embedded Human esophagus cancer tissue using [TA322801] (DEFA1 Antibody) at dilution 1/15 (Original magnification: ×200)



Immunohistochemistry of paraffin-embedded Human esophagus cancer tissue using [TA322801] (DEFA1 Antibody) at dilution 1/15, treated with synthetic peptide. (Original magnification:  $\times 200$ )