

Product datasheet for **TA322798**

Ephrin B2 (EFNB2) Rabbit Polyclonal Antibody

Product data:

Product Type:	Primary Antibodies
Applications:	IHC
Recommended Dilution:	IHC: 100-300 Positive control: Human colon cancer Predicted cell location: Cytoplasm
Reactivity:	Human, Mouse
Host:	Rabbit
Isotype:	IgG
Clonality:	Polyclonal
Immunogen:	Fusion protein corresponding to a region derived from 28-229 amino acids of human ephrin-B2
Formulation:	PBS pH7.3, 0.05% NaN ₃ , 50% glycerol
Concentration:	lot specific
Purification:	Antigen affinity purification
Conjugation:	Unconjugated
Storage:	Store at -20°C as received.
Stability:	Stable for 12 months from date of receipt.
Gene Name:	ephrin B2
Database Link:	NP_004084 Entrez Gene 13642 Mouse Entrez Gene 1948 Human P52799



[View online »](#)

Background:

This gene encodes a member of the ephrin (EPH) family. The ephrins and EPH-related receptors comprise the largest subfamily of receptor protein-tyrosine kinases and have been implicated in mediating developmental events; especially in the nervous system and in erythropoiesis. Based on their structures and sequence relationships; ephrins are divided into the ephrin-A (EFNA) class; which are anchored to the membrane by a glycosylphosphatidylinositol linkage; and the ephrin-B (EFNB) class; which are transmembrane proteins. This gene encodes an EFNB class ephrin which binds to the EPHB4 and EPHA3 receptors.

Synonyms:

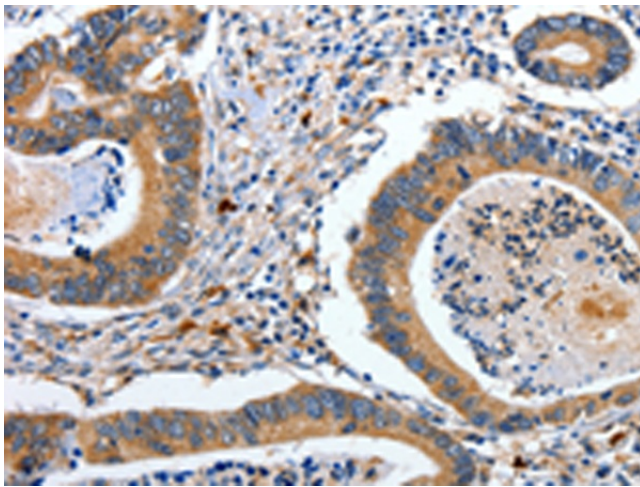
EPLG5; Htk-L; HTKL; LERK5

Protein Families:

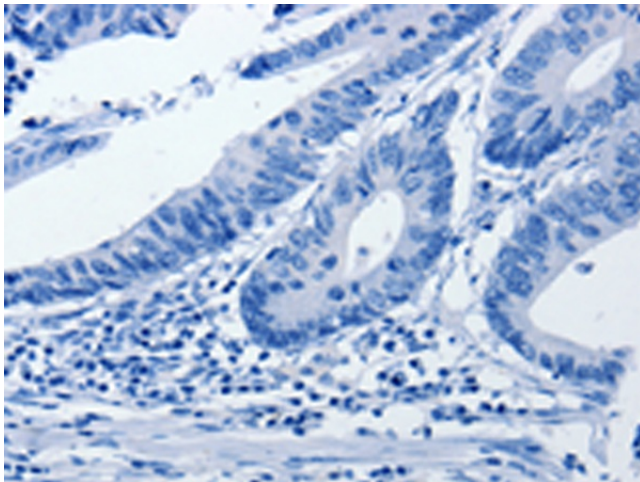
Druggable Genome, Transmembrane

Protein Pathways:

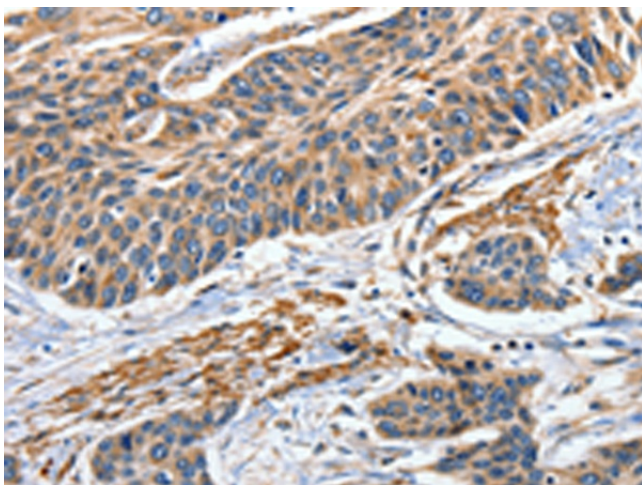
Axon guidance

Product images:

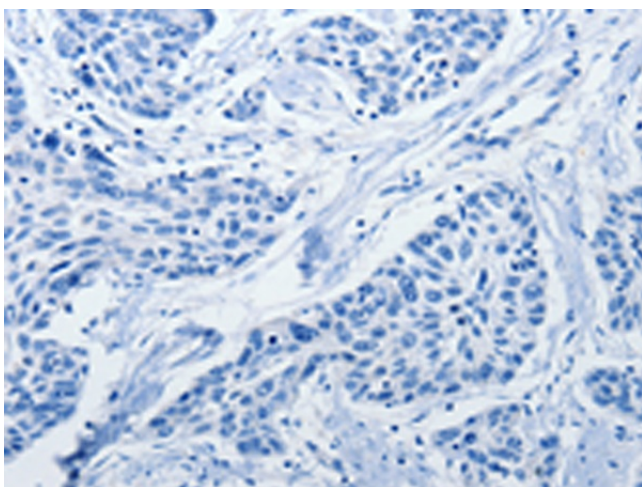
Immunohistochemistry of paraffin-embedded Human colon cancer tissue using TA322798 (EFNB2 Antibody) at dilution 1/80 (Original magnification: x200)



Immunohistochemistry of paraffin-embedded Human colon cancer tissue using TA322798 (EFNB2 Antibody) at dilution 1/80, treated with fusion protein. (Original magnification: x200)



Immunohistochemistry of paraffin-embedded Human esophagus cancer tissue using TA322798 (EFNB2 Antibody) at dilution 1/80 (Original magnification: $\times 200$)



Immunohistochemistry of paraffin-embedded Human esophagus cancer tissue using TA322798 (EFNB2 Antibody) at dilution 1/80, treated with fusion protein. (Original magnification: $\times 200$)