

Product datasheet for **TA322797**

E2F2 Rabbit Polyclonal Antibody

Product data:

Product Type:	Primary Antibodies
Applications:	WB
Recommended Dilution:	WB: 500-2000 WB positive control: A549 cells
Reactivity:	Human
Host:	Rabbit
Isotype:	IgG
Clonality:	Polyclonal
Immunogen:	Full length fusion protein
Formulation:	PBS pH7.3, 0.05% NaN ₃ , 50% glycerol
Concentration:	lot specific
Purification:	Antigen affinity purification
Conjugation:	Unconjugated
Storage:	Store at -20°C as received.
Stability:	Stable for 12 months from date of receipt.
Predicted Protein Size:	48 kDa
Gene Name:	E2F transcription factor 2
Database Link:	NP_004082 Entrez Gene 1870 Human Q14209



[View online »](#)

Background:

The protein encoded by this gene is a member of the E2F family of transcription factors. The E2F family plays a crucial role in the control of cell cycle and action of tumor suppressor proteins and is also a target of the transforming proteins of small DNA tumor viruses. The E2F proteins contain several evolutionally conserved domains found in most members of the family. These domains include a DNA binding domain; a dimerization domain which determines interaction with the differentiation regulated transcription factor proteins (DP); a transactivation domain enriched in acidic amino acids; and a tumor suppressor protein association domain which is embedded within the transactivation domain. This protein and another 2 members; E2F1 and E2F3; have an additional cyclin binding domain. This protein binds specifically to retinoblastoma protein pRB in a cell-cycle dependent manner; and it exhibits overall 46% amino acid identity to E2F1.?

Synonyms:

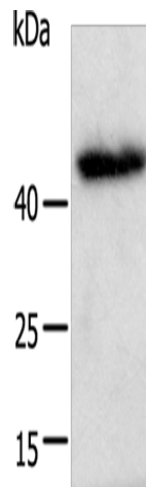
E2F-2

Protein Families:

Druggable Genome, Transcription Factors

Protein Pathways:

Bladder cancer, Cell cycle, Chronic myeloid leukemia, Glioma, Melanoma, Non-small cell lung cancer, Pancreatic cancer, Pathways in cancer, Prostate cancer, Small cell lung cancer

Product images:

Gel: 12+15%SDS-PAGE

Lysate: 40 µg

Lane: A549 cells

Primary antibody: TA322797 (E2F2 Antibody) at dilution 1/600

Secondary antibody: Goat anti rabbit IgG at 1/8000 dilution

Exposure time: 10 minutes