

## Product datasheet for **TA322794**

### FGF12 Rabbit Polyclonal Antibody

#### Product data:

Product Type:	Primary Antibodies
Applications:	WB
Recommended Dilution:	WB: 500-2000 WB positive control: Mouse brain tissue
Reactivity:	Human, Mouse, Rat
Host:	Rabbit
Isotype:	IgG
Clonality:	Polyclonal
Immunogen:	Full length fusion protein
Formulation:	PBS pH7.3, 0.05% NaN <sub>3</sub> , 50% glycerol
Concentration:	lot specific
Purification:	Antigen affinity purification
Conjugation:	Unconjugated
Storage:	Store at -20°C as received.
Stability:	Stable for 12 months from date of receipt.
Predicted Protein Size:	20 kDa
Gene Name:	fibroblast growth factor 12
Database Link:	<a href="#">NP_004104</a> <a href="#">Entrez Gene 14167 Mouse</a> <a href="#">Entrez Gene 170630 Rat</a> <a href="#">Entrez Gene 2257 Human</a> <a href="#">P61328</a>



[View online »](#)

**Background:**

The protein encoded by this gene is a member of the fibroblast growth factor (FGF) family. FGF family members possess broad mitogenic and cell survival activities; and are involved in a variety of biological processes; including embryonic development; cell growth; morphogenesis; tissue repair; tumor growth; and invasion. This growth factor lacks the N-terminal signal sequence present in most of the FGF family members; but it contains clusters of basic residues that have been demonstrated to act as a nuclear localization signal. When transfected into mammalian cells; this protein accumulated in the nucleus; but was not secreted. The specific function of this gene has not yet been determined. Two alternatively spliced transcript variants encoding distinct isoforms have been reported. [

**Synonyms:**

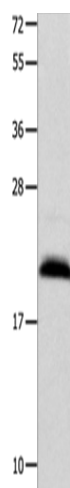
FGF12B; FHF1

**Protein Families:**

Secreted Protein

**Protein Pathways:**

MAPK signaling pathway, Melanoma, Pathways in cancer, Regulation of actin cytoskeleton

**Product images:**

Gel: 12%SDS-PAGE

Lysate: 40 µg

Lane: Mouse brain tissue

Primary antibody: TA322794 (FGF12 Antibody) at dilution 1/450

Secondary antibody: Goat anti rabbit IgG at 1/8000 dilution

Exposure time: 50 seconds