

Product datasheet for **TA322792**

GIP Rabbit Polyclonal Antibody

Product data:

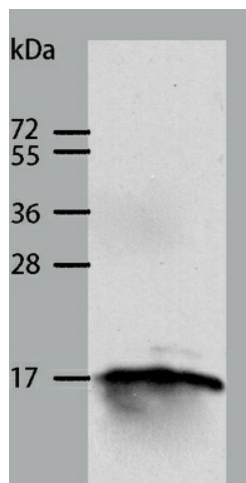
Product Type:	Primary Antibodies
Applications:	IHC, WB
Recommended Dilution:	ELISA: 1:1000-2000, WB: 1:200-1000, IHC: 1:10-50
Reactivity:	Human, Mouse, Rat
Host:	Rabbit
Isotype:	IgG
Clonality:	Polyclonal
Immunogen:	Fusion protein corresponding to a region derived from 22-153 amino acids of human gastric inhibitory polypeptide
Formulation:	PBS pH7.3, 0.05% NaN ₃ , 50% glycerol
Concentration:	lot specific
Purification:	Antigen affinity purification
Conjugation:	Unconjugated
Storage:	Store at -20°C as received.
Stability:	Stable for 12 months from date of receipt.
Predicted Protein Size:	17 kDa
Gene Name:	gastric inhibitory polypeptide
Database Link:	NP_004114 Entrez Gene 14607 Mouse Entrez Gene 25040 Rat Entrez Gene 2695 Human P09681
Background:	This gene encodes an incretin hormone and belongs to the glucagon superfamily. The encoded protein is important in maintaining glucose homeostasis as it is a potent stimulator of insulin secretion from pancreatic beta-cells following food ingestion and nutrient absorption. This gene stimulates insulin secretion via its G protein-coupled receptor activation of adenylyl cyclase and other signal transduction pathways. It is a relatively poor inhibitor of gastric acid secretion.
Synonyms:	gastric inhibitory polypeptide; glucose-dependent insulinotropic polypeptide



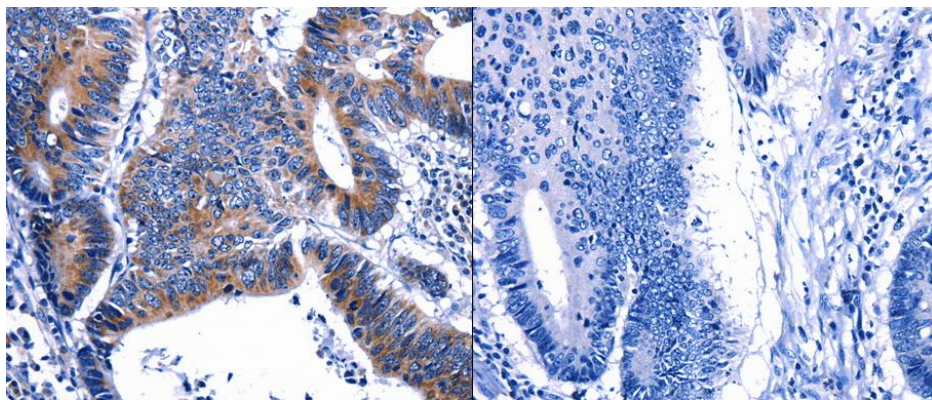
[View online »](#)

Protein Families: Druggable Genome, Secreted Protein

Product images:



Predicted band size: 17kDa. Positive control: 293T cell lysate. Recommended dilution: 1/200-1000. (Gel: 12%SDS-PAGE Lysate: 40 ug Primary antibody: 1/250 dilution Secondary antibody: Goat anti Rabbit IgG - H&L (HRP) at 1/8000 dilution Exposure time: 10 minutes)



Predicted cell location: Cytoplasm. Positive control: Human colon and liver cancer tissue. Recommended dilution: 1/10-50 The image on the left is immunohistochemistry of paraffin-embedded Human colon and liver cancer tissue using GIP antibody at dilution 1/13, on the right is treated with the fusion protein. (Original magnification: x200)