

Product datasheet for **TA322789S**

Ghrelin Receptor (GHSR) Rabbit Polyclonal Antibody

Product data:

Product Type:	Primary Antibodies
Applications:	WB
Recommended Dilution:	WB: 1000-3000 WB positive control: A549 cells
Reactivity:	Human, Mouse, Rat
Host:	Rabbit
Isotype:	IgG
Clonality:	Polyclonal
Immunogen:	Synthetic peptide corresponding to a region derived from 18-32 amino acids of Human growth hormone secretagogue receptor
Formulation:	PBS pH7.3, 0.05% NaN ₃ , 50% glycerol
Purification:	Antigen affinity purification
Conjugation:	Unconjugated
Storage:	Store at -20°C as received.
Stability:	Stable for 12 months from date of receipt.
Predicted Protein Size:	41 kDa
Gene Name:	growth hormone secretagogue receptor
Database Link:	NP_004113 Entrez Gene 84022 Rat Entrez Gene 208188 Mouse Entrez Gene 2693 Human Q92847
Background:	This gene encodes a member of the G-protein coupled receptor family. The encoded protein may play a role in energy homeostasis and regulation of body weight. Two identified transcript variants are expressed in several tissues and are evolutionary conserved in fish and swine. One transcript; 1a; excises an intron and encodes the functional protein; this protein is the receptor for the Ghrelin ligand and defines a neuroendocrine pathway for growth hormone release. The second transcript (1b) retains the intron and does not function as a receptor for Ghrelin; however; it may function to attenuate activity of isoform 1a. Mutations in this gene are associated with autosomal idiopathic short stature.



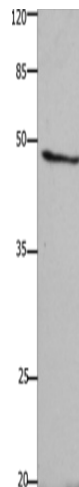
[View online »](#)

Synonyms: GHDP

Protein Families: Druggable Genome, GPCR, Transmembrane

Protein Pathways: Neuroactive ligand-receptor interaction

Product images:



Gel: 10%SDS-PAGE

Lysate: 40 μ g

Lane: A549 cells

Primary antibody: [TA322789] (GHSR Antibody) at dilution 1/1500

Secondary antibody: Goat anti rabbit IgG at 1/8000 dilution

Exposure time: 1 minute