

## Product datasheet for **TA322783**

### Persephin (PSPN) Rabbit Polyclonal Antibody

#### Product data:

Product Type:	Primary Antibodies
Applications:	IHC
Recommended Dilution:	IHC: 25-100 Positive control: Human colon cancer Predicted cell location: Cytoplasm
Reactivity:	Human
Host:	Rabbit
Isotype:	IgG
Clonality:	Polyclonal
Immunogen:	Synthetic peptide corresponding to a region derived from 32-46 amino acids of human persephin
Formulation:	PBS pH7.3, 0.05% NaN <sub>3</sub> , 50% glycerol
Concentration:	lot specific
Purification:	Antigen affinity purification
Conjugation:	Unconjugated
Storage:	Store at -20°C as received.
Stability:	Stable for 12 months from date of receipt.
Gene Name:	persephin
Database Link:	<a href="#">NP_004149</a> <a href="#">Entrez Gene 5623 Human</a> <a href="#">O60542</a>



[View online »](#)

**Background:**

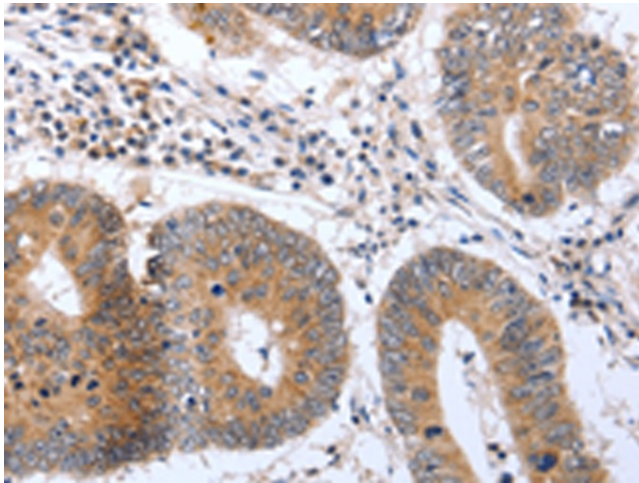
The protein encoded by this gene is a neurotrophic factor; belonging to the GDNF family. Neurotrophic factors are important for the proper development and maintenance of the nervous system. These factors promote neuronal survival and can prevent the neuronal degeneration associated with injury; toxin exposure; or neurodegenerative disease. The encoded protein has amino acid similarity to its other family members; glial cell line-derived neurotrophic factor and neurturin. This gene product promotes the survival of ventral midbrain dopaminergic neurons in culture and prevents their degeneration after 6-hydroxydopamine treatment in vivo.

**Synonyms:**

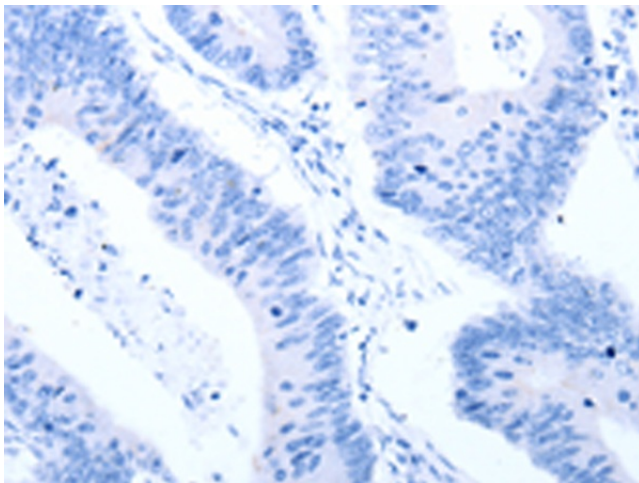
PSP

**Protein Families:**

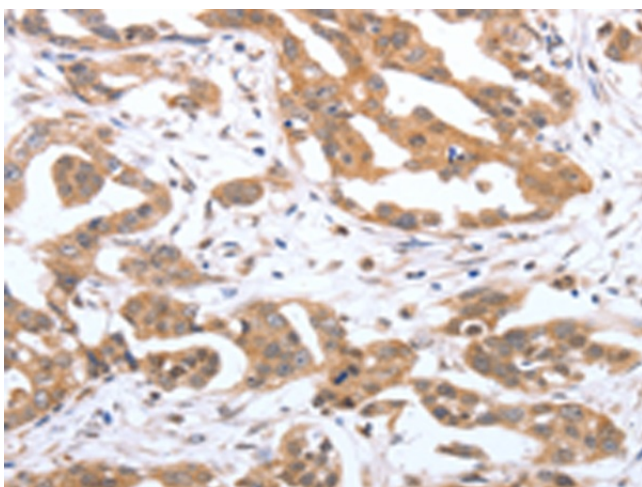
Secreted Protein

**Product images:**

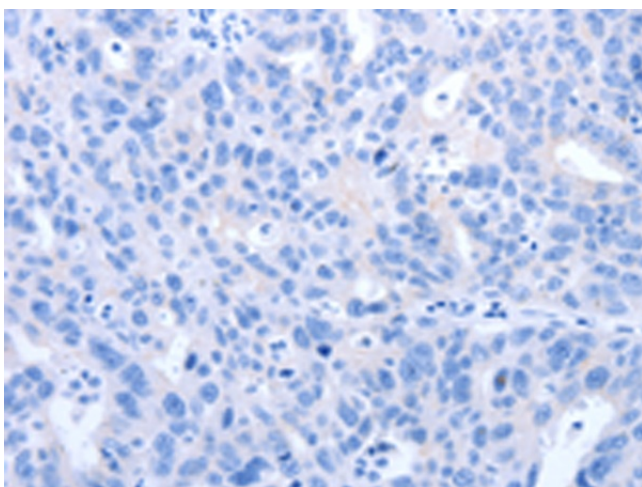
Immunohistochemistry of paraffin-embedded Human colon cancer tissue using TA322783 (PSPN Antibody) at dilution 1/25 (Original magnification:  $\times 200$ )



Immunohistochemistry of paraffin-embedded Human colon cancer tissue using TA322783 (PSPN Antibody) at dilution 1/25, treated with synthetic peptide. (Original magnification:  $\times 200$ )



Immunohistochemistry of paraffin-embedded Human ovarian cancer tissue using TA322783 (PSPN Antibody) at dilution 1/25 (Original magnification: ×200)



Immunohistochemistry of paraffin-embedded Human ovarian cancer tissue using TA322783 (PSPN Antibody) at dilution 1/25, treated with synthetic peptide. (Original magnification: ×200)