

Product datasheet for **TA322781**

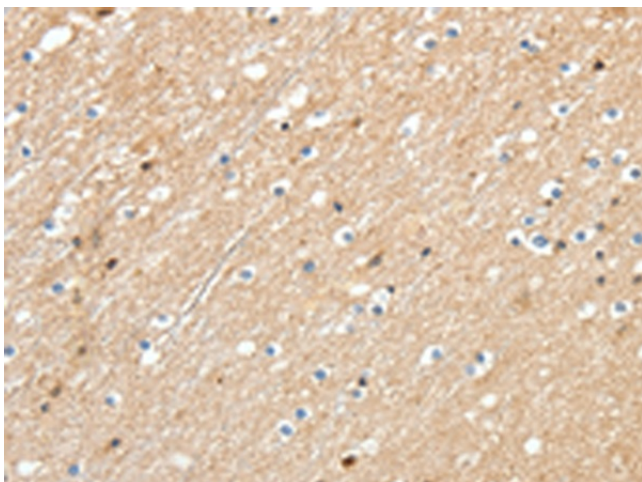
RRAD Rabbit Polyclonal Antibody

Product data:

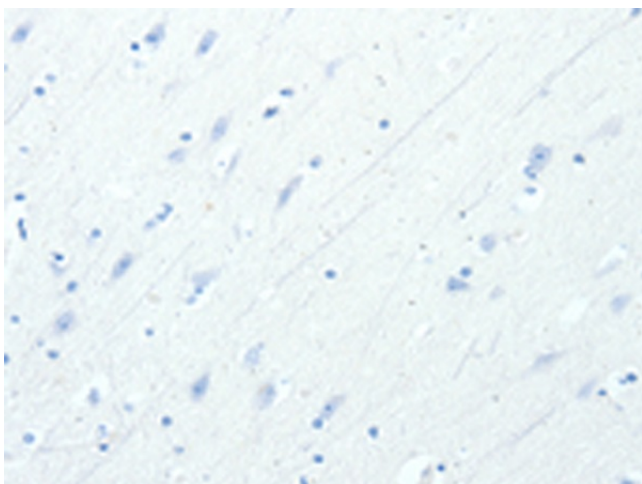
Product Type:	Primary Antibodies
Applications:	IHC
Recommended Dilution:	IHC: 25-100 Positive control: Human brain Predicted cell location: Cytoplasm
Reactivity:	Human, Mouse, Rat
Host:	Rabbit
Isotype:	IgG
Clonality:	Polyclonal
Immunogen:	Synthetic peptide corresponding to a region derived from 173-178 amino acids of human Ras-related associated with diabetes
Formulation:	PBS pH7.3, 0.05% NaN ₃ , 50% glycerol
Concentration:	lot specific
Purification:	Antigen affinity purification
Conjugation:	Unconjugated
Storage:	Store at -20°C as received.
Stability:	Stable for 12 months from date of receipt.
Gene Name:	RRAD, Ras related glycolysis inhibitor and calcium channel regulator
Database Link:	NP_004156 Entrez Gene 56437 MouseEntrez Gene 83521 RatEntrez Gene 6236 Human P55042
Background:	The protein may be important in cardiac antiarrhythmia via the strong suppression of voltage-gated L-type Ca ²⁺ currents. As regulator of voltage-dependent L-type calcium channel subunit alpha-1C trafficking to the cell membrane. Inhibits cardiac hypertrophy through the calmodulin-dependent kinase II (CaMKII) pathway and phosphorylation and activation of CAMK2D. Mostly expressed in the heart and muscle of type II diabetic humans. Also found in the skeletal muscle; lung and adipose tissue. Lesser amounts in placenta and kidney.
Synonyms:	RAD; RAD1; REM3



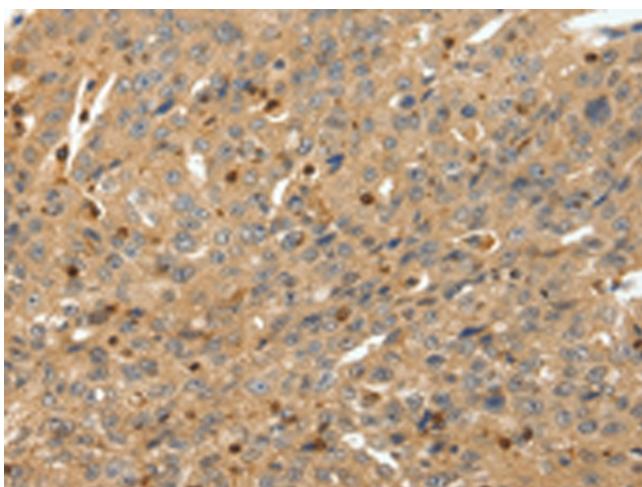
[View online »](#)

Product images:

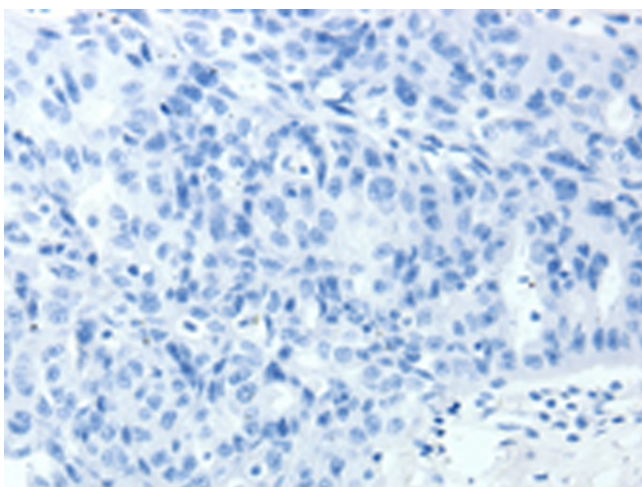
Immunohistochemistry of paraffin-embedded Human brain tissue using TA322781 (RRAD Antibody) at dilution 1/30 (Original magnification: ×200)



Immunohistochemistry of paraffin-embedded Human brain tissue using TA322781 (RRAD Antibody) at dilution 1/30, treated with synthetic peptide. (Original magnification: ×200)



Immunohistochemistry of paraffin-embedded Human ovarian cancer tissue using TA322781 (RRAD Antibody) at dilution 1/30 (Original magnification: $\times 200$)



Immunohistochemistry of paraffin-embedded Human ovarian cancer tissue using TA322781 (RRAD Antibody) at dilution 1/30, treated with synthetic peptide. (Original magnification: $\times 200$)