

Product datasheet for **TA322780S**

EAAT2 (SLC1A2) Rabbit Polyclonal Antibody

Product data:

Product Type:	Primary Antibodies
Applications:	IHC
Recommended Dilution:	IHC: 25-100 Positive control: Human brain Predicted cell location: Cytoplasm, Cell membrane
Reactivity:	Human, Mouse, Rat
Host:	Rabbit
Isotype:	IgG
Clonality:	Polyclonal
Immunogen:	Synthetic peptide corresponding to a region derived from 556-574 amino acids of human solute carrier family 1 (glial high affinity glutamate transporter), member 2
Formulation:	PBS pH7.3, 0.05% NaN ₃ , 50% glycerol
Purification:	Antigen affinity purification
Conjugation:	Unconjugated
Storage:	Store at -20°C as received.
Stability:	Stable for 12 months from date of receipt.
Gene Name:	solute carrier family 1 member 2
Database Link:	NP_004162 Entrez Gene 20511 Mouse Entrez Gene 29482 Rat Entrez Gene 6506 Human P43004
Background:	This gene encodes a member of a family of solute transporter proteins. The membrane-bound protein is the principal transporter that clears the excitatory neurotransmitter glutamate from the extracellular space at synapses in the central nervous system. Glutamate clearance is necessary for proper synaptic activation and to prevent neuronal damage from excessive activation of glutamate receptors. Mutations in and decreased expression of this protein are associated with amyotrophic lateral sclerosis. Alternatively spliced transcript variants of this gene have been identified.
Synonyms:	EAAT2; GLT-1; HBGT

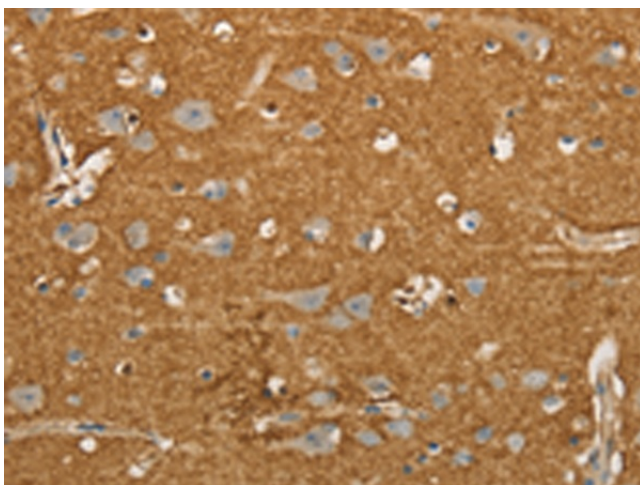


[View online »](#)

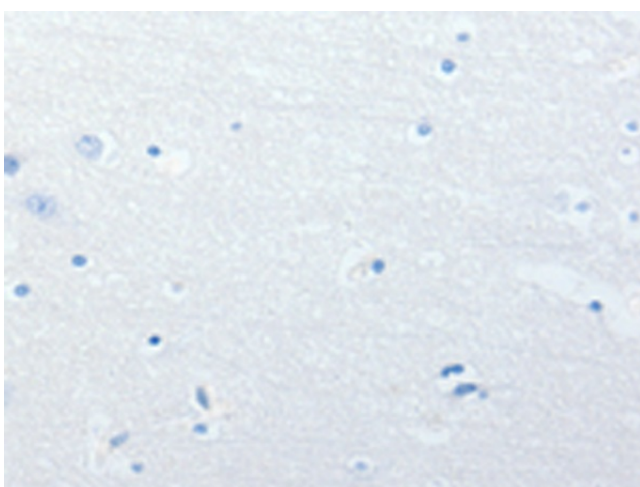
Protein Families: Transmembrane

Protein Pathways: Amyotrophic lateral sclerosis (ALS)

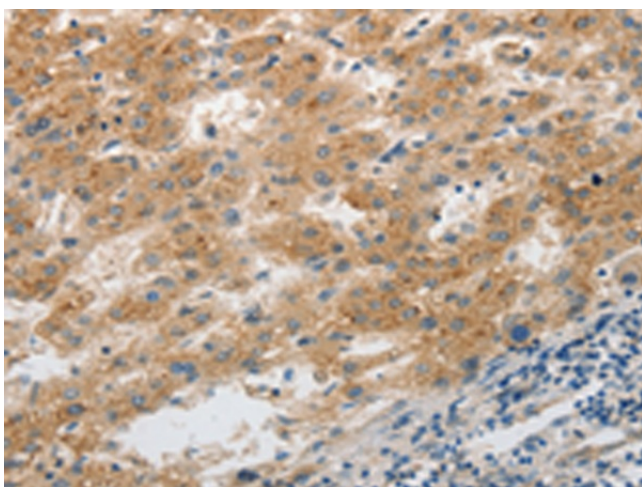
Product images:



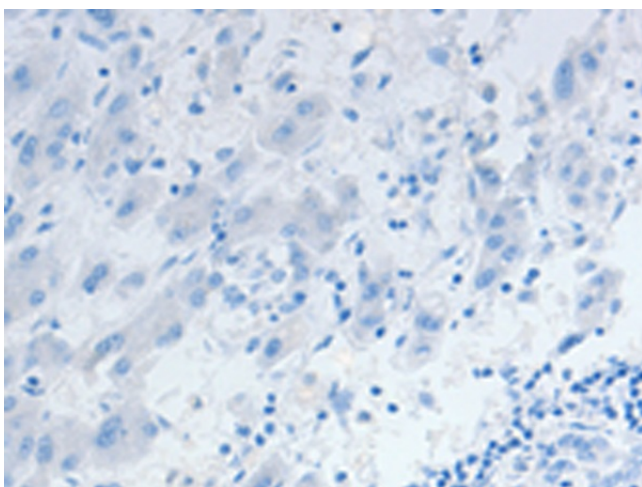
Immunohistochemistry of paraffin-embedded Human brain tissue using [TA322780] (SLC1A2 Antibody) at dilution 1/20 (Original magnification: $\times 200$)



Immunohistochemistry of paraffin-embedded Human brain tissue using [TA322780] (SLC1A2 Antibody) at dilution 1/20, treated with synthetic peptide. (Original magnification: $\times 200$)



Immunohistochemistry of paraffin-embedded Human liver cancer tissue using [TA322780] (SLC1A2 Antibody) at dilution 1/20 (Original magnification: $\times 200$)



Immunohistochemistry of paraffin-embedded Human liver cancer tissue using [TA322780] (SLC1A2 Antibody) at dilution 1/20, treated with synthetic peptide. (Original magnification: $\times 200$)