

Product datasheet for **TA322778**

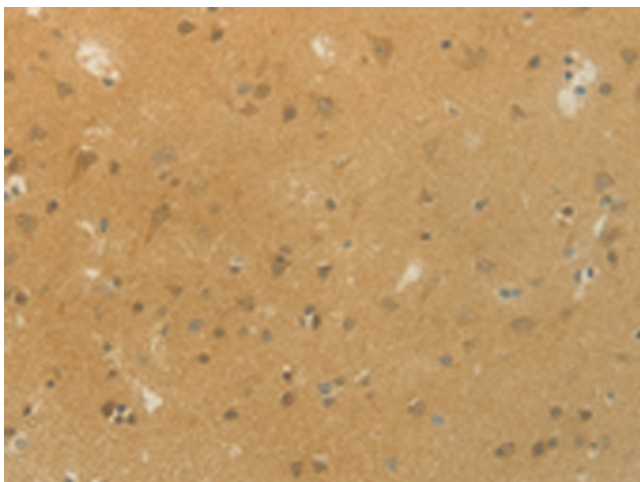
SLC9A3 Rabbit Polyclonal Antibody

Product data:

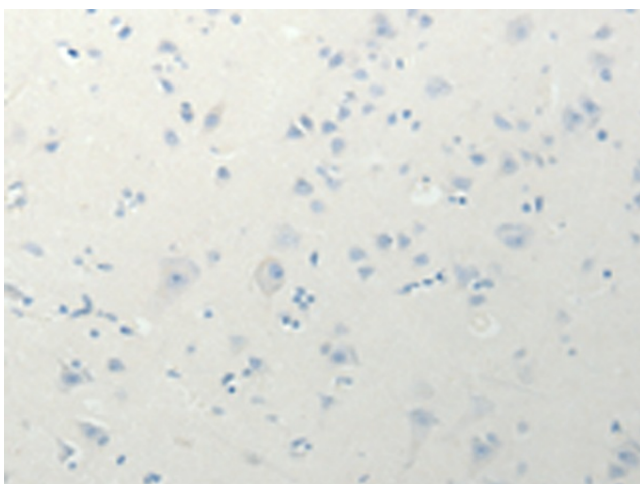
Product Type:	Primary Antibodies
Applications:	IHC
Recommended Dilution:	IHC: 25-100 Positive control: Human brain Predicted cell location: Cytoplasm
Reactivity:	Human, Mouse, Rat
Host:	Rabbit
Isotype:	IgG
Clonality:	Polyclonal
Immunogen:	Synthetic peptide corresponding to a region derived from 397-411 amino acids of Human solute carrier family 9, subfamily A (NHE3, cation proton antiporter 3), member 3
Formulation:	PBS pH7.3, 0.05% NaN ₃ , 50% glycerol
Concentration:	lot specific
Purification:	Antigen affinity purification
Conjugation:	Unconjugated
Storage:	Store at -20°C as received.
Stability:	Stable for 12 months from date of receipt.
Gene Name:	solute carrier family 9 member A3
Database Link:	NP_004165 Entrez Gene 24784 Rat Entrez Gene 105243 Mouse Entrez Gene 6550 Human P48764
Background:	Involved in pH regulation to eliminate acids generated by active metabolism or to counter adverse environmental conditions. Major proton extruding system driven by the inward sodium ion chemical gradient. Plays an important role in signal transduction. Binds SLC9A3R1 and SLC9A3R2. Interacts with CHP1; CHP2 and SHANK2. Interacts with PDZD3 and interactions decrease in response to elevated calcium ion levels
Synonyms:	NHE3
Protein Families:	Druggable Genome, Transmembrane



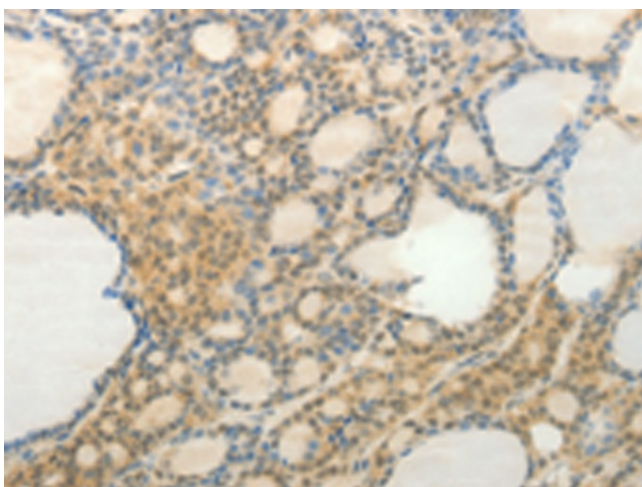
[View online »](#)

Product images:

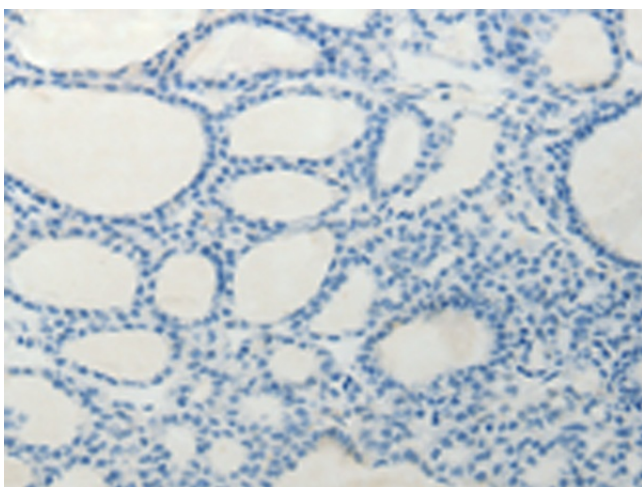
Immunohistochemistry of paraffin-embedded Human brain tissue using TA322778 (SLC9A3 Antibody) at dilution 1/20 (Original magnification: ×200)



Immunohistochemistry of paraffin-embedded Human brain tissue using TA322778 (SLC9A3 Antibody) at dilution 1/20, treated with synthetic peptide. (Original magnification: ×200)



Immunohistochemistry of paraffin-embedded Human thyroid cancer tissue using TA322778 (SLC9A3 Antibody) at dilution 1/20 (Original magnification: $\times 200$)



Immunohistochemistry of paraffin-embedded Human thyroid cancer tissue using TA322778 (SLC9A3 Antibody) at dilution 1/20, treated with synthetic peptide. (Original magnification: $\times 200$)