

## Product datasheet for **TA322776S**

### Securin (PTTG1) Rabbit Polyclonal Antibody

#### Product data:

Product Type:	Primary Antibodies
Applications:	IHC
Recommended Dilution:	IHC: 100-300 Positive control: Human breast cancer Predicted cell location: Cytoplasm, Nucleus
Reactivity:	Human
Host:	Rabbit
Isotype:	IgG
Clonality:	Polyclonal
Immunogen:	Synthetic peptide corresponding to a region derived from 99-112 amino acids of human pituitary tumor-transforming 1
Formulation:	PBS pH7.3, 0.05% NaN <sub>3</sub> , 50% glycerol
Purification:	Antigen affinity purification
Conjugation:	Unconjugated
Storage:	Store at -20°C as received.
Stability:	Stable for 12 months from date of receipt.
Gene Name:	pituitary tumor-transforming 1
Database Link:	<a href="#">NP_004210</a> <a href="#">Entrez Gene 9232 Human</a> <a href="#">O95997</a>



[View online »](#)

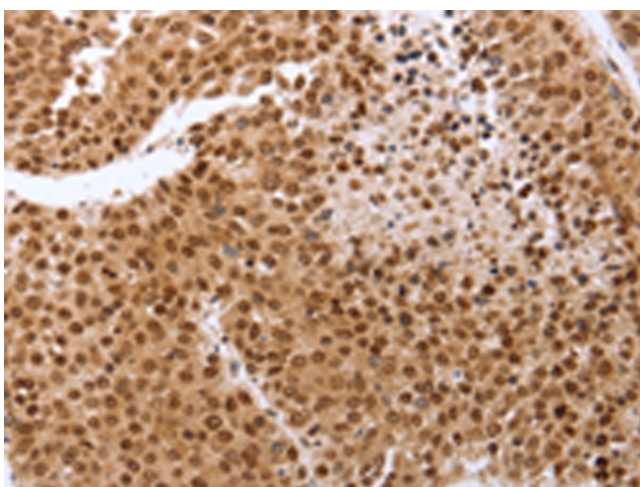
**Background:** The encoded protein is a homolog of yeast securin proteins; which prevent separins from promoting sister chromatid separation. It is an anaphase-promoting complex (APC) substrate that associates with a separin until activation of the APC. The gene product has transforming activity in vitro and tumorigenic activity in vivo; and the gene is highly expressed in various tumors. The gene product contains 2 PXXP motifs; which are required for its transforming and tumorigenic activities; as well as for its stimulation of basic fibroblast growth factor expression. It also contains a destruction box (D box) that is required for its degradation by the APC. The acidic C-terminal region of the encoded protein can act as a transactivation domain. The gene product is mainly a cytosolic protein; although it partially localizes in the nucleus.

**Synonyms:** EAP1; HPTTG; PTTG; TUTR1

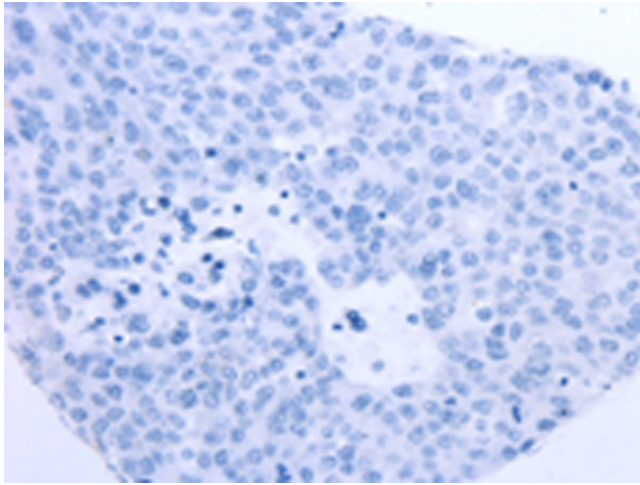
**Protein Families:** Druggable Genome, Transcription Factors

**Protein Pathways:** Cell cycle, Oocyte meiosis

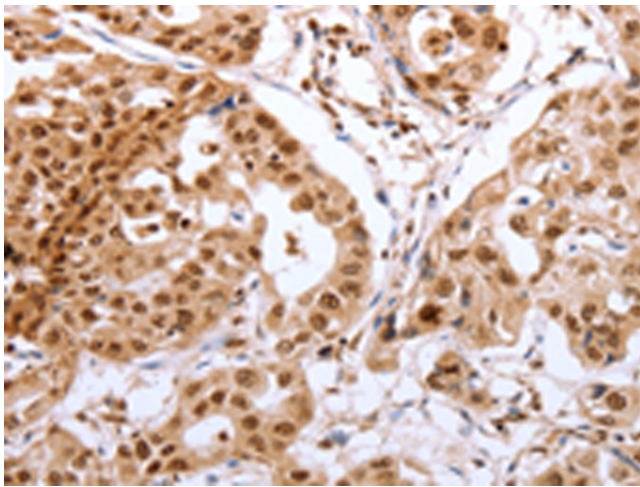
**Product images:**



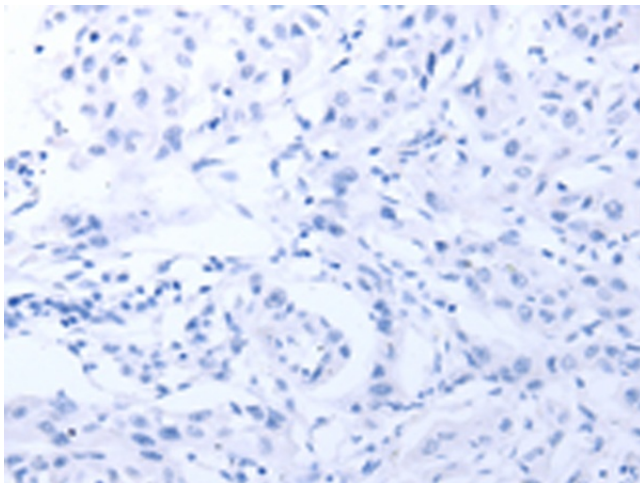
Immunohistochemistry of paraffin-embedded Human breast cancer tissue using [TA322776] (PTTG1 Antibody) at dilution 1/60 (Original magnification:  $\times 200$ )



Immunohistochemistry of paraffin-embedded Human breast cancer tissue using [TA322776] (PTTG1 Antibody) at dilution 1/60, treated with synthetic peptide. (Original magnification:  $\times 200$ )



Immunohistochemistry of paraffin-embedded Human lung cancer tissue using [TA322776] (PTTG1 Antibody) at dilution 1/60 (Original magnification:  $\times 200$ )



Immunohistochemistry of paraffin-embedded Human lung cancer tissue using [TA322776] (PTTG1 Antibody) at dilution 1/60, treated with synthetic peptide. (Original magnification:  $\times 200$ )