

Product datasheet for **TA322775**

AKAP6 Rabbit Polyclonal Antibody

Product data:

| | |
|-----------------------|----------------------------------------------------------------------------------------------------------------------------------------------------------------------------------------------------------------------------------------------------------------------------------------------------------------------------------------------------------------------------------------------------------------------------------------------------------------------------------------------------------------------------------------------------------------------------|
| Product Type: | Primary Antibodies |
| Applications: | IHC |
| Recommended Dilution: | IHC: 50-200 Positive control: Human thyroid cancer Predicted cell location: Nucleus |
| Reactivity: | Human |
| Host: | Rabbit |
| Isotype: | IgG |
| Clonality: | Polyclonal |
| Immunogen: | Synthetic peptide corresponding to a region derived from 2249-2262 amino acids of human A kinase (PRKA) anchor protein 6 |
| Formulation: | PBS pH7.3, 0.05% NaN ₃ , 50% glycerol |
| Concentration: | lot specific |
| Purification: | Antigen affinity purification |
| Conjugation: | Unconjugated |
| Storage: | Store at -20°C as received. |
| Stability: | Stable for 12 months from date of receipt. |
| Gene Name: | A-kinase anchoring protein 6 |
| Database Link: | NP_004265 Entrez Gene 9472 Human Q13023 |
| Background: | The A-kinase anchor proteins (AKAPs) are a group of structurally diverse proteins; which have the common function of binding to the regulatory subunit of protein kinase A (PKA) and confining the holoenzyme to discrete locations within the cell. This gene encodes a member of the AKAP family. The encoded protein is highly expressed in various brain regions and cardiac and skeletal muscle. It is specifically localized to the sarcoplasmic reticulum and nuclear membrane; and is involved in anchoring PKA to the nuclear membrane or sarcoplasmic reticulum. |

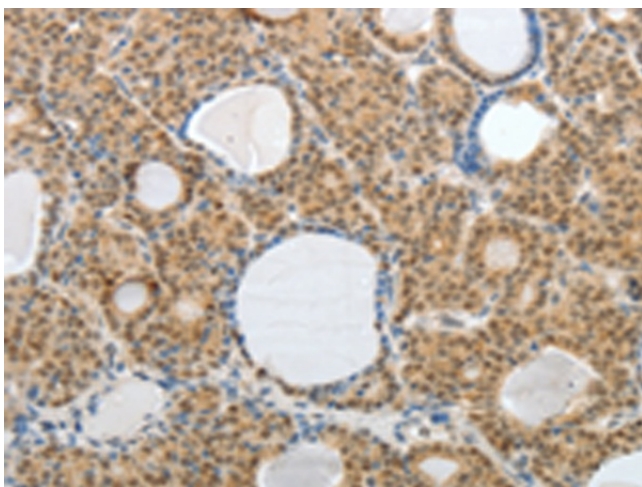


[View online »](#)

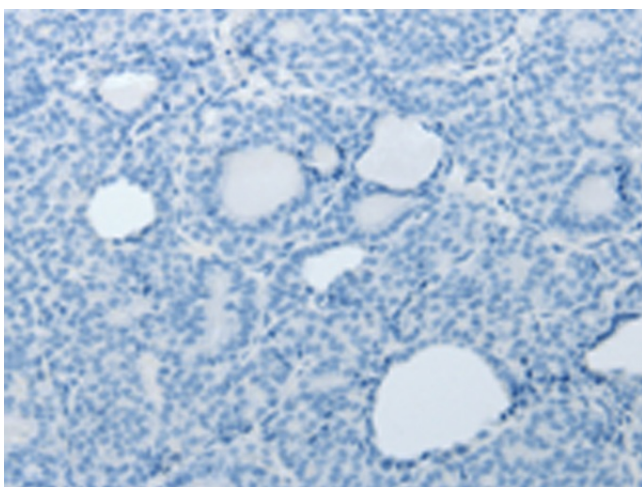
Synonyms: ADAP6; ADAP100; AKAP100; mAKAP; PRKA6

Protein Families: Druggable Genome

Product images:



Immunohistochemistry of paraffin-embedded Human thyroid cancer tissue using TA322775 (AKAP6 Antibody) at dilution 1/30 (Original magnification: $\times 200$)



Immunohistochemistry of paraffin-embedded Human thyroid cancer tissue using TA322775 (AKAP6 Antibody) at dilution 1/30, treated with synthetic peptide. (Original magnification: $\times 200$)