

Product datasheet for **TA322774**

RAB3D Rabbit Polyclonal Antibody

Product data:

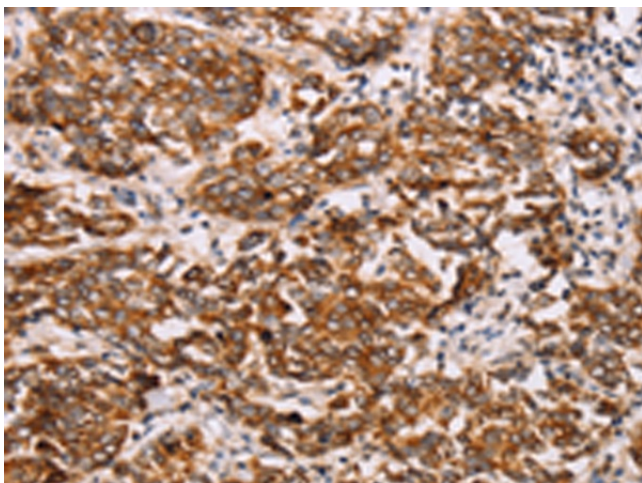
Product Type:	Primary Antibodies
Applications:	IHC
Recommended Dilution:	IHC: 25-100 Positive control: Human breast cancer Predicted cell location: Cytoplasm, Cell membrane
Reactivity:	Human, Mouse, Rat
Host:	Rabbit
Isotype:	IgG
Clonality:	Polyclonal
Immunogen:	Synthetic peptide corresponding to a region derived from 202-216 amino acids of Human RAB3D, member RAS oncogene family
Formulation:	PBS pH7.3, 0.05% NaN ₃ , 50% glycerol
Concentration:	lot specific
Purification:	Antigen affinity purification
Conjugation:	Unconjugated
Storage:	Store at -20°C as received.
Stability:	Stable for 12 months from date of receipt.
Gene Name:	RAB3D, member RAS oncogene family
Database Link:	NP_004274 Entrez Gene 19340 Mouse Entrez Gene 140665 Rat Entrez Gene 9545 Human O95716
Background:	The RAB3D cDNA encodes a 24-kD protein as determined by in vitro translation. The deduced 219-amino acid sequence shows highest homology to the RAB3 subfamily of low molecular mass GTP-binding proteins. Northern blot analysis of various human hematopoietic cell lines showed a single transcript of 4.1 kb present at variable levels in each cell line; with highest expression in granulocytic lines. RAB3D was also highly expressed in YJ and HL-60 cells in response to retinoic acid treatment.
Synonyms:	D2-2; GOV; RAB16; RAD3D



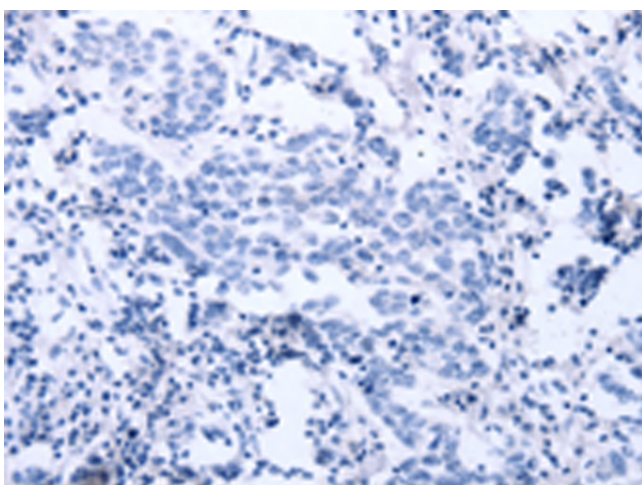
[View online »](#)

Protein Families: Druggable Genome

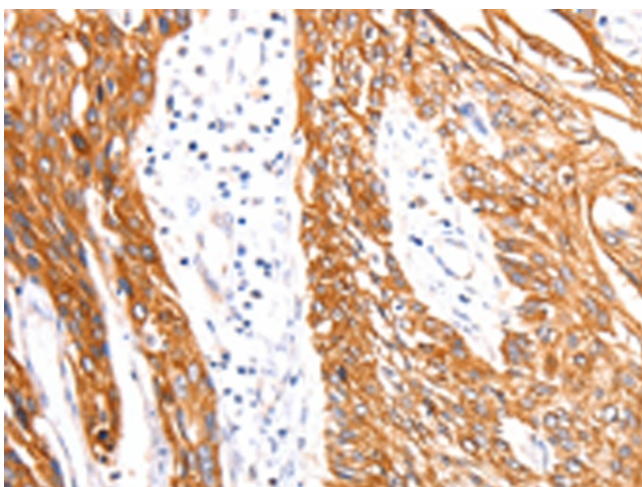
Product images:



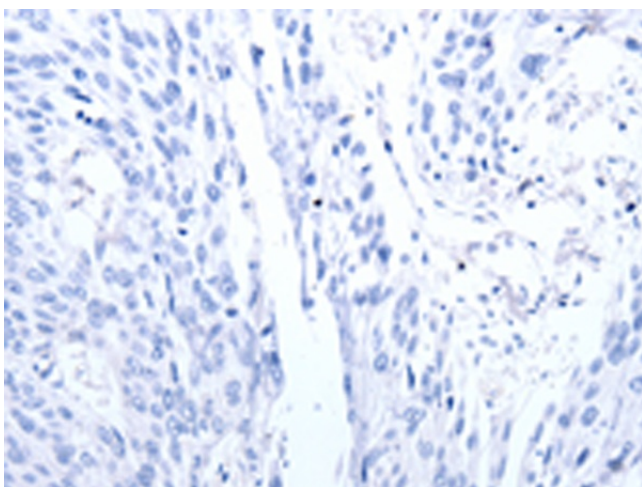
Immunohistochemistry of paraffin-embedded Human breast cancer tissue using TA322774 (RAB3D Antibody) at dilution 1/27 (Original magnification: $\times 200$)



Immunohistochemistry of paraffin-embedded Human breast cancer tissue using TA322774 (RAB3D Antibody) at dilution 1/27, treated with synthetic peptide. (Original magnification: $\times 200$)



Immunohistochemistry of paraffin-embedded Human esophagus cancer tissue using TA322774 (RAB3D Antibody) at dilution 1/27 (Original magnification: $\times 200$)



Immunohistochemistry of paraffin-embedded Human esophagus cancer tissue using TA322774 (RAB3D Antibody) at dilution 1/27, treated with synthetic peptide. (Original magnification: $\times 200$)